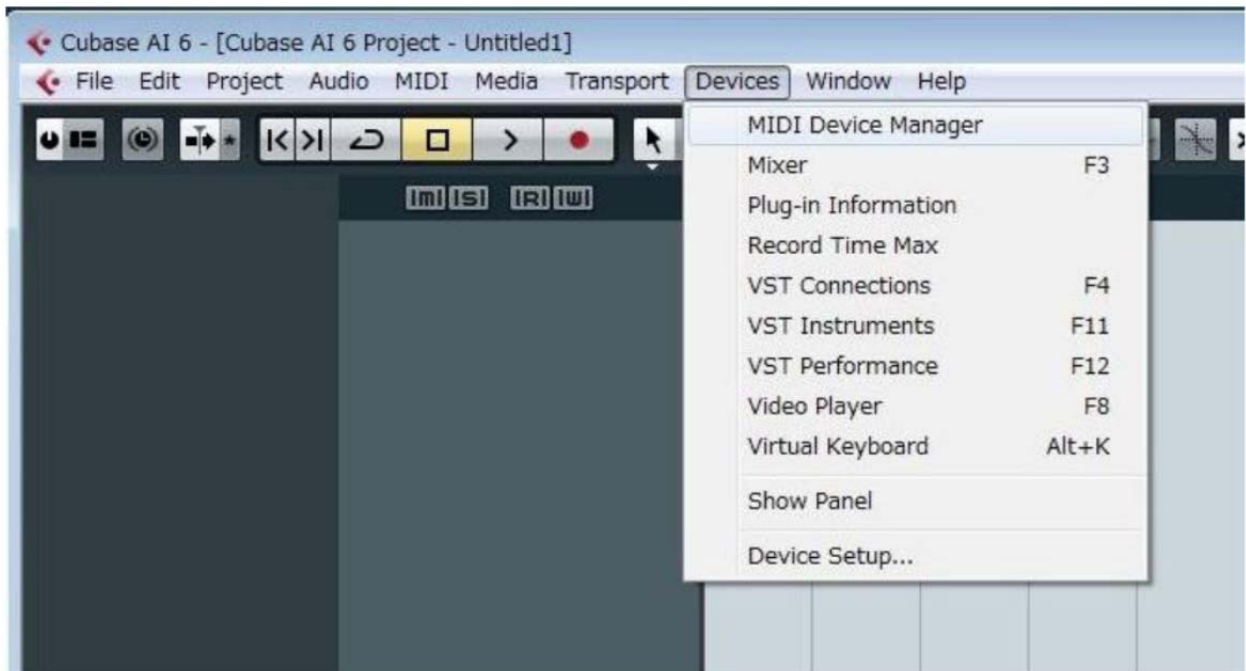


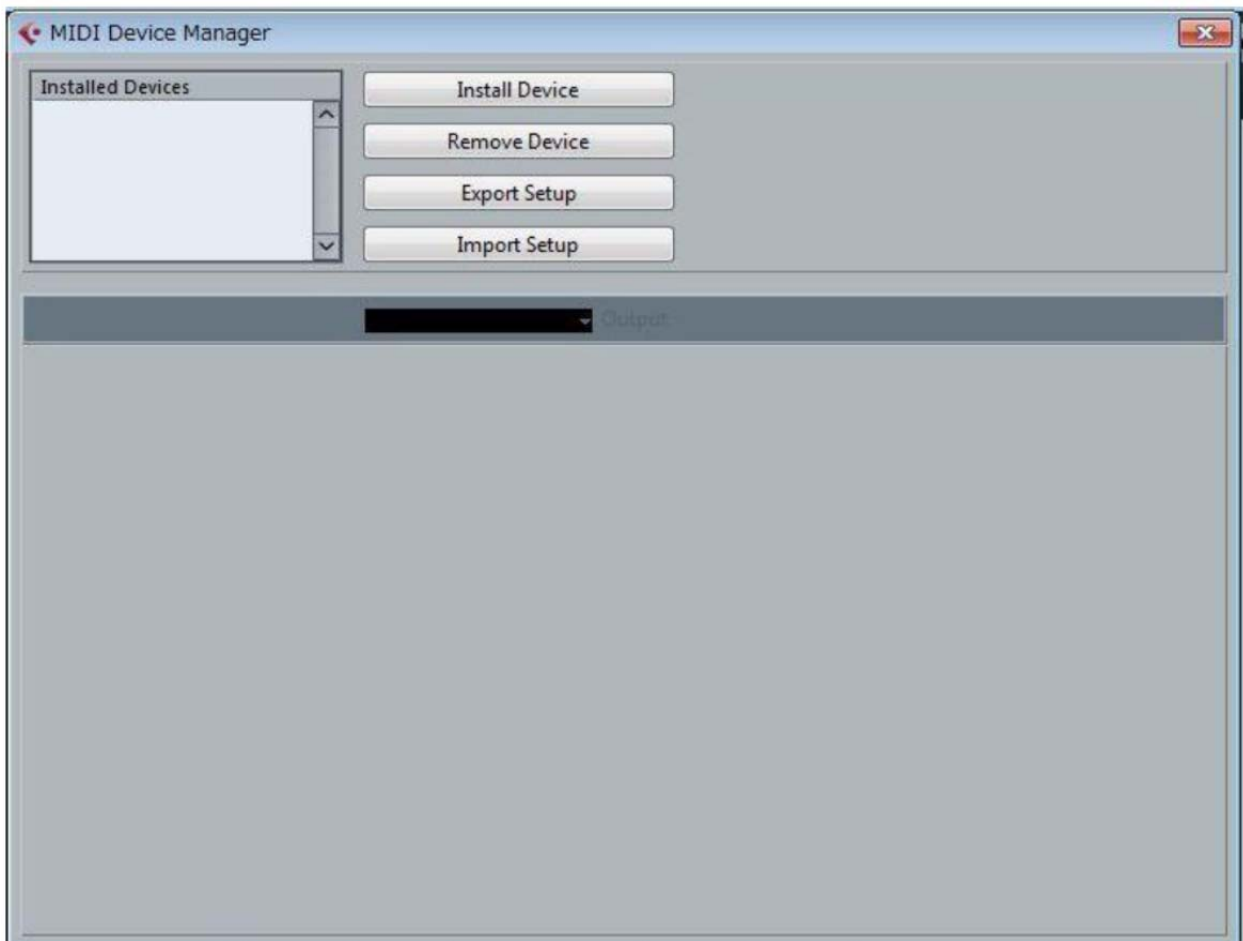
PSR S950 Voice List Installation Guide

[1] Start Cubase on your computer.

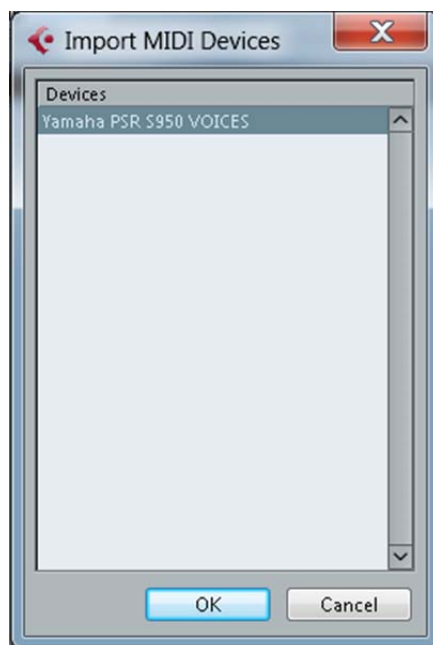
Click [Devices] menu → [MIDI Device Manager]



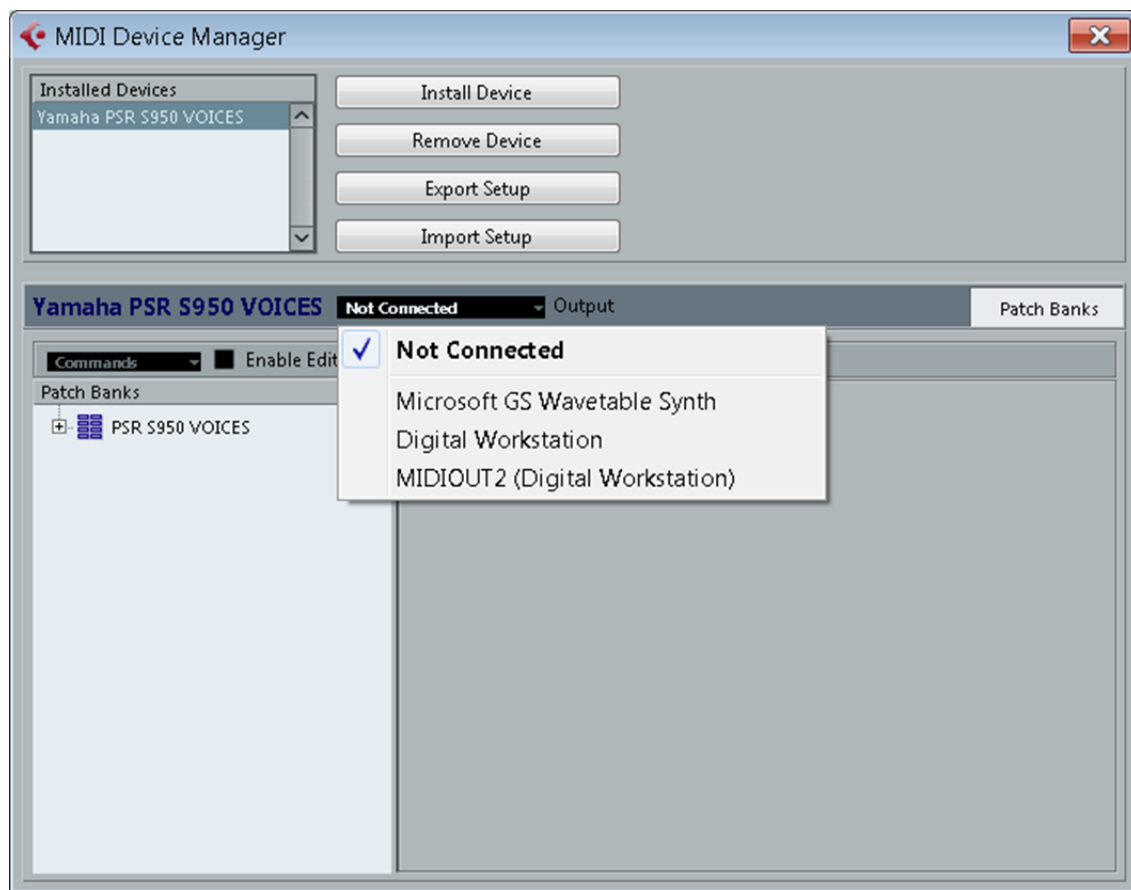
[2] Click [Import Setup] and open "Yamaha PSR S950_VOICES.xml" file.



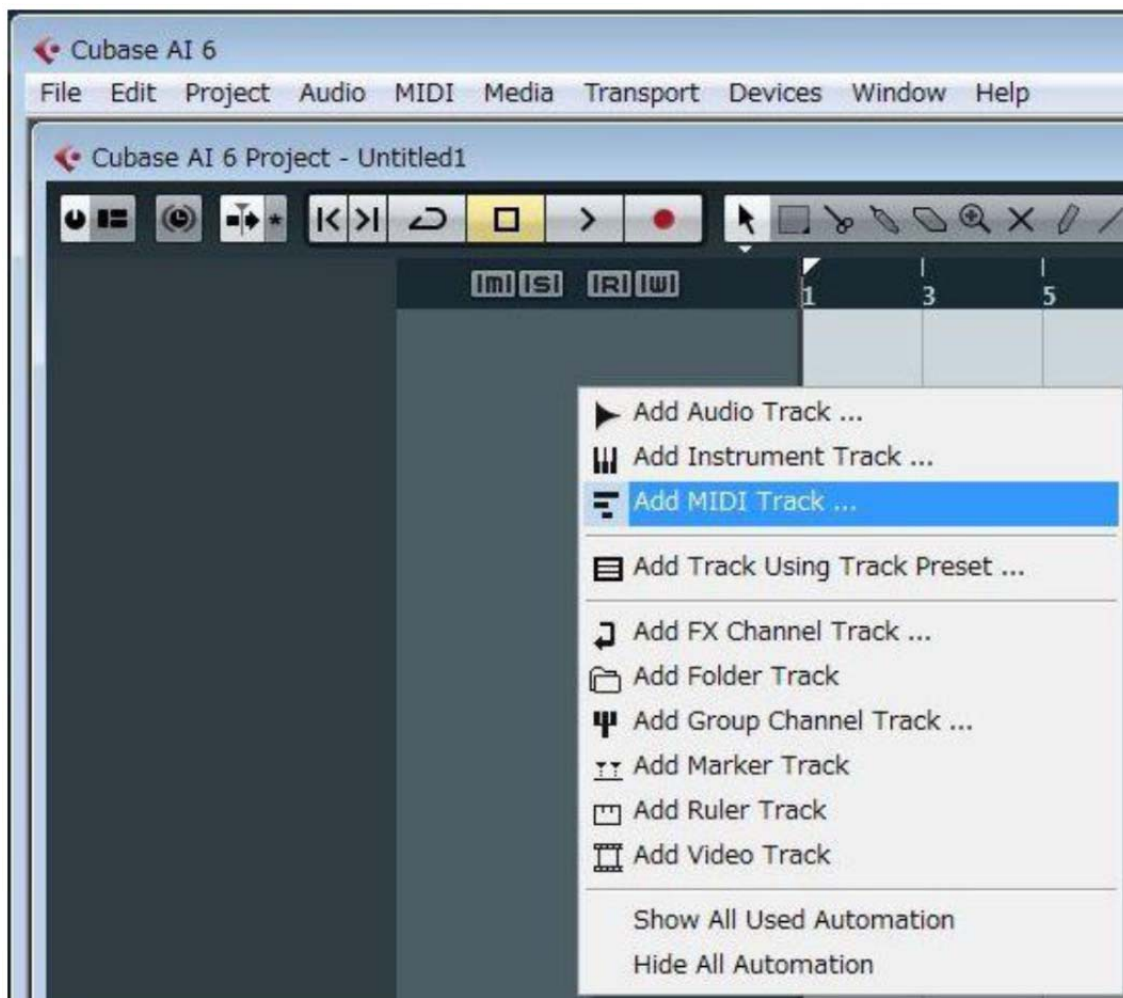
【3】 Click [OK] to close Import window.



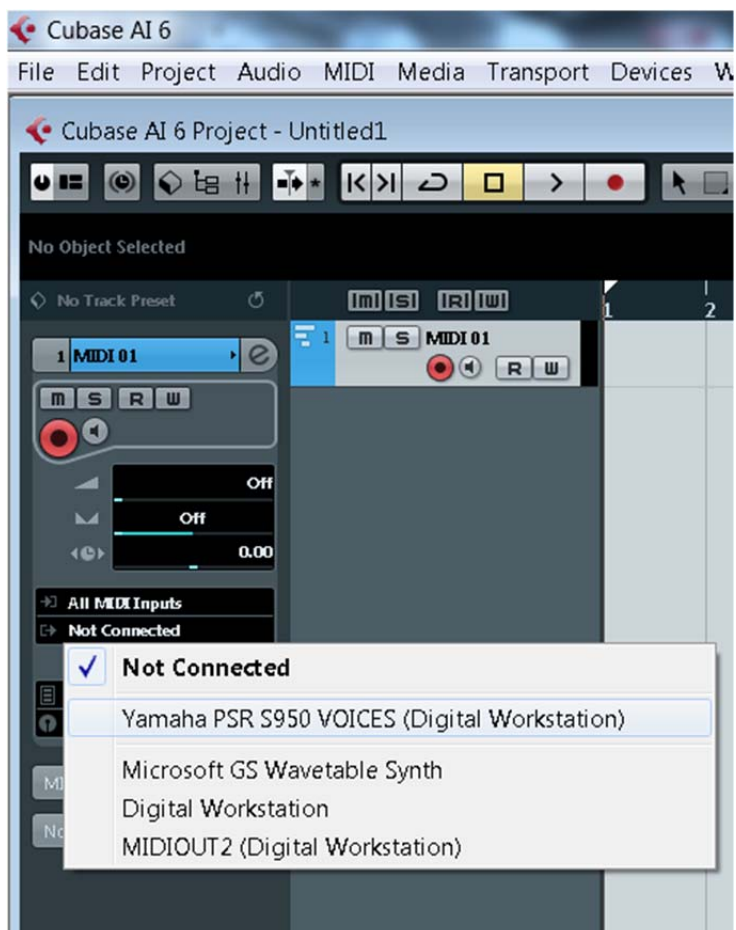
【4】After selecting “Yamaha PSR S950 VOICES” in the “Installed Devices” area on the MIDI Device Manager window, set output to “Digital Workstation” at the lower part of the window, then close the window.



【5】 Create a MIDI track.



【6】Set the Input Routing to “All MIDI Inputs” and set the Output Routing to “Yamaha PSR S950 VOICES (Digital Workstation)”.



【7】Click in the Program Selector to call up the PSR S950 Voice List, then select the desired Voice. Click each category to find Preset Voices.

