

MLC-200 Base Quick Set Up Guide

Yamaha Music Lab



April 2022

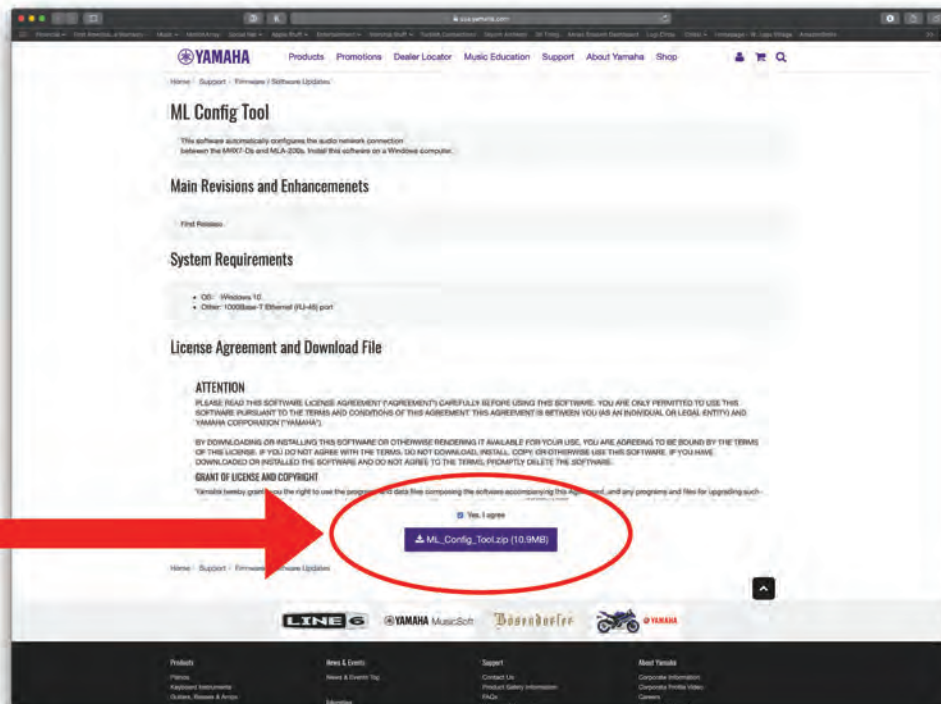
Contents

Step 1 Download Software (Windows/PC)	1
Step 1.1 Download Software (Apple/iPad)	1
Step 2 Unpack all boxes	2
Step 3 Set unit ID for all MLA-200 boxes	3
Step 4 Connect all cables	4
Step 5 Connect Windows PC via Ethernet	5
Step 5.1 Connect all components	5
Step 5.2 Launch the ML Touch app in iPad	6
Step 6 Launch ML Config Tool	7
Step 7. Test and Troubleshoot	8

Prerequisite: Before beginning set up, you must have knowledge of installing and running Windows PC apps.

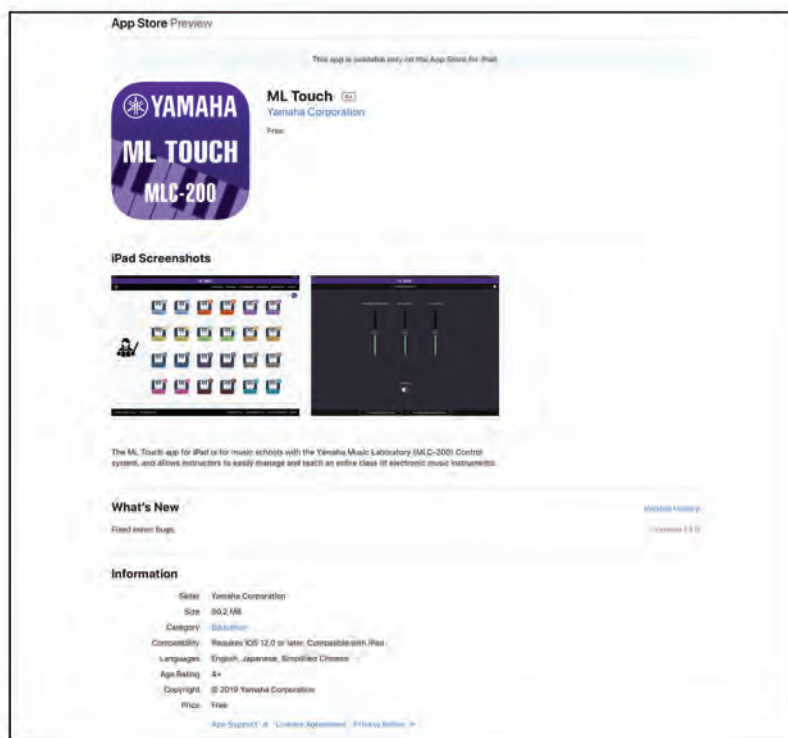
Step 1. Download Software

ML Config Tool (Windows/PC Only): https://usa.yamaha.com/support/updates/ml_config_tool.html



Step 1.1 Download Software

ML Touch - iOS App Store (Apple iPad only)



Step 2. Unpack all boxes

PK01-MLC (Box 1/4) Includes:

1. MLA-200 (x1)
2. SWR2100P10G-MLC (x1)
3. Pre Configured WIFIROUTER-MLC (x1)
4. STPLONG-MLC (x9)
5. STPSHORT-MLC (x2)
6. WIRELESS HEADPHONE (x1)
7. TRS CABLES (x9)
8. SETUP GUIDE (x1)

PK02-MLC (Box 2/4) Includes:

1. CM500-MLC (Headphones x9)

PK03-MLC (Box 3/4) Includes:

1. MLA-200 (x8)

PK04-MLC (Box 4/4) Includes:

1. Pre Configured MRX7D-MLC (x1)



Step 3. Set unit ID for all MLA-200 boxes

(Teacher and Student boxes)

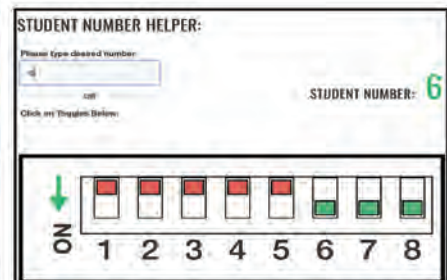
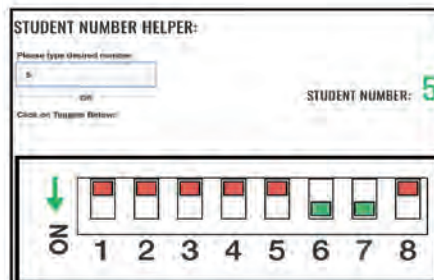
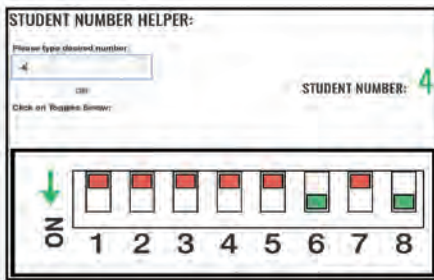
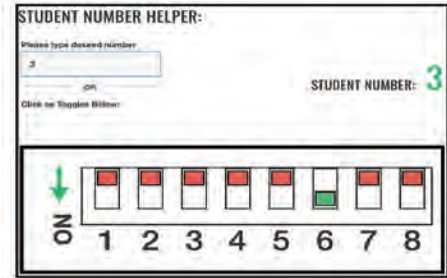
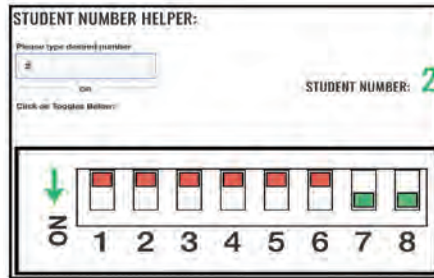
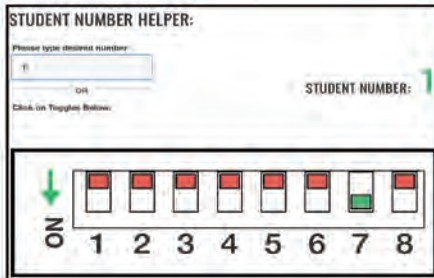
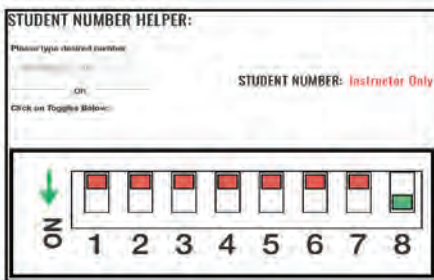
Visit this link or scan QR code for an automatic Student Number Helper:

Yamaha.io/MLA200Setup



Note that when the MLA-200 is in the upright position, the dip switches are upside down. Be sure to properly orient the MLA-200 while setting up unit IDs.

MLA-200 Teacher and Students 1-9 are shown here.



Please refer to the Student Number website for more Student Number configurations.

Step 4. Connect all cables

Please refer to the Installation Guide for more detailed information.



Connections:

- Wifi Router to Port 8 of SWR2100
- MRX7-D to Port 9 of SWR2100
- MLA200 Teacher to Port 7 of SWR2100. Students 1-6: Ports 1-6
- Windows/PC: Port 10 for Setup Only **For Setup Only*

For Labs with more than 6 Students with 2 SWR2100 PoE Switches

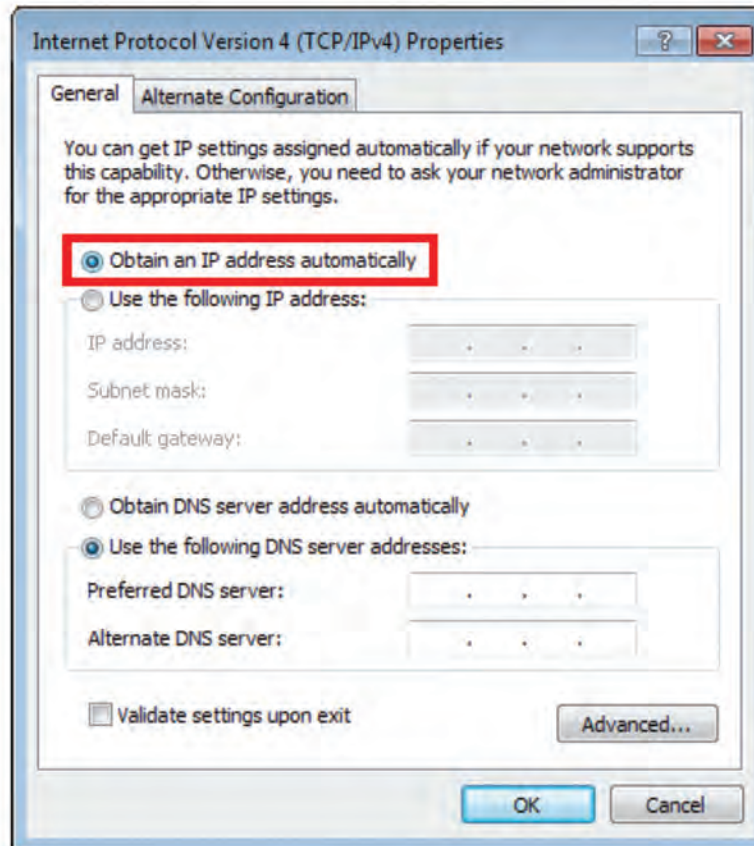
- SWR2100#2: Port 10 to Port 10 of SWR2100#1 (students 1-8 and teacher)
- MLA200 Student 7-15 on Ports 1-9 of SWR2100#2
- Once all components are connected and turned on, please wait up to 3 minutes before launching the ML Config Tool for Set up, or the ML Touch App

****Music Lab will only work with specific MTX firmware- file does not need to be modified****

Step 5. Connect Windows PC via Ethernet*

Connect to any available port on the WIFI router (LAN Port).

- Set Windows PC to obtain address automatically in the “Internet Protocol Version 4 (TCP/IPv4) Properties” dialog box (DHCP). Click “OK”
- Turn off any antivirus and firewall software
- Turn WIFI off



*Windows PC connection is for setup only

Step 5.1 Connect all components

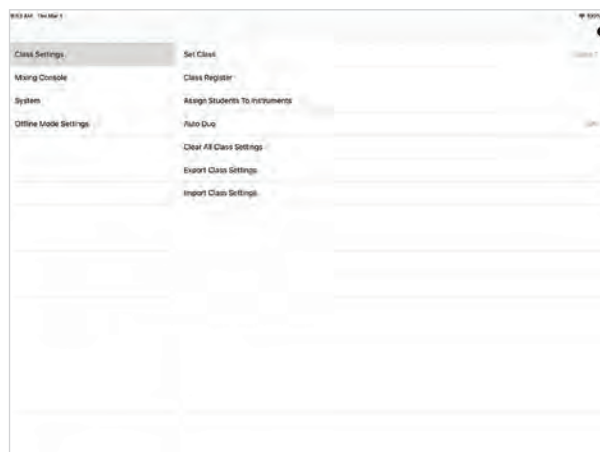
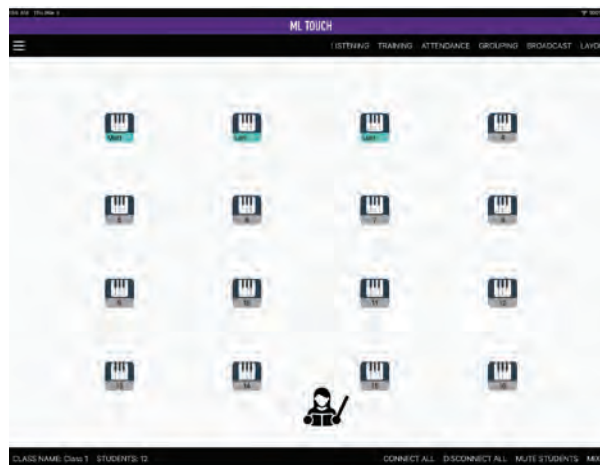
Power On Components.

- Wait 5 Minutes for all components to boot up
- Launch ML Config Tool
- Wait 2 Minutes before Pressing “Confirm”

Step 5.2 Launch ML Touch app in iPad

Test Lab Controls

- Go to Settings>WIFI
- Choose SSID: MLC200Lab
- Password: YamahaMLC

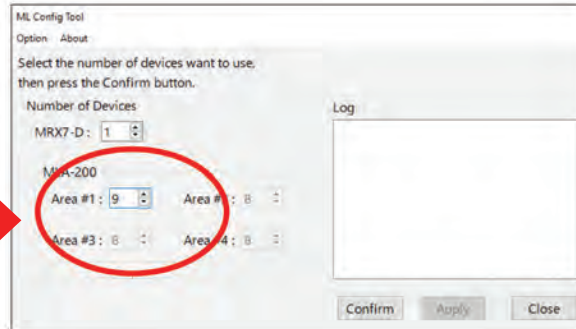


Step 6. Launch ML Config Tool

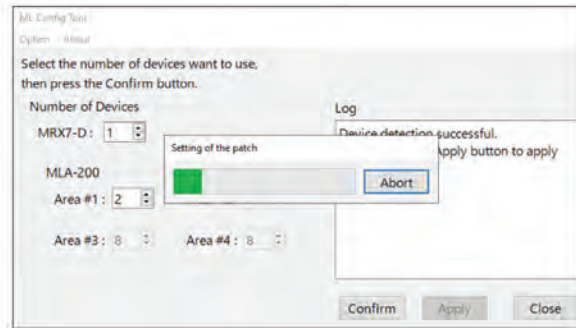
Windows/PC App

Follow on-screen steps to set up the Lab System

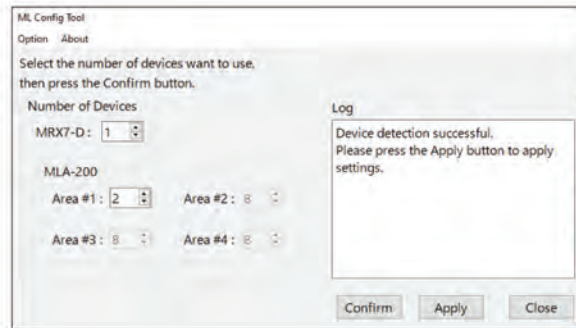
Total number of MLA-200 boxes in the system (Student and Teacher)



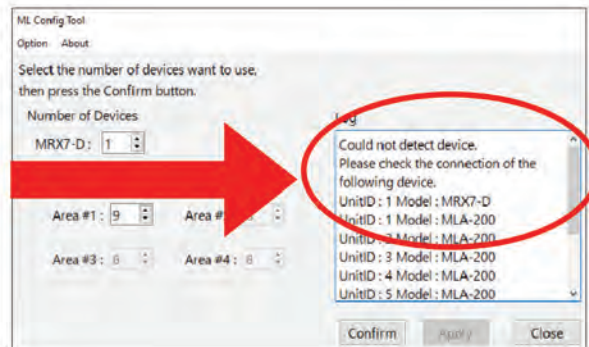
Click Confirm (Setup Progress)



Click Apply (Setup Complete)



Example of unsuccessful setup



Step 7. Test and Troubleshoot

Test	Procedure
Confirm MLA-200 Connection	Use ML Touch app and “Connect All”. Confirm that the lights on the MLA-200 boxes turn on
Check Audio	Turn on Mic from the ML Touch App and confirm that voice and instrument can be heard between teacher and students

***Should any MLA-200 boxes need to be replaced, you must run the ML Config Tool from step 6.**

Connections:

- Wifi Router to Port 8 of SWR2100
- MRX7-D to Port 9 of SWR2100
- MLA200 Teacher to Port 7 of SWR2100. Students 1-6: Ports 1-6
- Windows/PC: Port 10 for Setup Only **For Setup Only*

For Labs with more than 6 Students with 2 SWR2100 PoE Switches

- SWR2100#2: Port 10 to Port 10 of SWR2100#1 (students 1-8 and teacher)
- MLA200 Student 7-15 on Ports 1-9 of SWR2100#2
- Once all components are connected and turned on, please wait up to 3 minutes before launching the ML Config Tool for Set up, or the ML Touch App

****Music Lab will only work with specific MTX firmware- file does not need to be modified****

