

CPX15 For seasoned guitarists, the CPX15's solid hand-selected spruce top with back and sides of rosewood fully delivers the tonal concept and values upon which the series was designed. Nautical flag inlays beautifully ornate both the neck and around the sound hole. The CPX15 is accompanied by four variations based on the points of the compass, each possessing characteristics that make them unique unto themselves.



Richie Kotzen

CPX15N

NORTH
The CPX15N's beautiful satin sycamore back and sides along with its solid spruce top are covered with an all-white translucent finish that summons images of the frozen north. Whale's tail inlays of pearl on the mahogany neck and an exquisite midnight sun scene surrounding the sound hole portray the natural wonders to be found in this rugged land.



CPX15N
Top: Solid Spruce
Back & Sides: Satin Sycamore
Neck: Mahogany
Fingerboard: Ebony
Bridge: Ebony
Body Depth: 95-115mm (3-3/4"-4-1/2")
String Scale: 650mm (25-9/16")
Tuning Machines: Diecast Gold
P.U. System: System 40 2 way
Electronics: 4 Band EQ, AMF, Blend

CPX15E

EAST
Rising out of the desert sands ancient Egyptian hieroglyphics adorning the CPX15E bring forth images of the riches of the Pharaohs. Back and sides are of quilted mahogany adding richness both visually and sonically to this scene from ancient times.



CPX15E
Top: Solid Spruce
Back & Sides: Quilted Mahogany
Neck: Mahogany
Fingerboard: Ebony
Bridge: Ebony
Body Depth: 95-115mm (3-3/4"-4-1/2")
String Scale: 650mm (25-9/16")
Tuning Machines: Diecast Gold
P.U. System: System 40 2 way
Electronics: 4 Band EQ, AMF, Blend

COMPASS SERIES

CPX8SY

The CPX8SY offers guitarists some exquisite variations on the CPX8 theme. These Ocean Color Series instruments use sides and back of Sycamore that are finished, along with the solid Spruce top, in four luxuriously rich hues inspired by scenes from the world's oceans. All four instruments utilize a 2-way pickup system identical to that found on the CPX8 and CPX8M. They also deliver the same excellent quality and outstanding cost performance.



Joan Jones



CPX8SY
Top: Solid Spruce
Back & Sides: White Sycamore
Neck: Nato
Fingerboard: Rosewood
Bridge: Rosewood
Body Depth: 95-115mm (3-3/4"-4-1/2")
String Scale: 650mm (25-9/16")
Tuning Machines: Diecast Gold
P.U. System: System45 2way (piezo + mic.)
Electronics: 3 Band EQ, AMF Slider, Mic. Vol, PHASE SW, Volume
Color: Tropical Marina Blue (TMB), Morning Sea Violet (MSV), Dusk Sun Red (DSR), Lagoon Green (LG)



LG



DSR

CPX8/8M

The CPX8 and CPX8M acoustic/electrics offer guitarists an excellent instrument with outstanding cost performance. Incorporating a solid spruce top with rosewood sides and back, the CPX8 delivers a well-balanced sound throughout its entire range. The CPX8M incorporates a solid cedar top with mahogany sides and back to produce a milder tone. Both instruments feature 2-way pickups consisting of a bridge mounted piezo pickup and a mic attached to a gooseneck mounted within the body. Either one of these guitars is a great choice for the guitarist ready to test the waters on their own.



CPX8

CPX8
Top: Solid Spruce
Back & Sides: Rosewood
Neck: Nato
Fingerboard: Rosewood
Bridge: Rosewood
Body Depth: 95-115mm (3-3/4"-4-1/2")
String Scale: 650mm (25-9/16")
Tuning Machines: Diecast Gold
P.U. System: System45 2way (piezo + mic.)
Electronics: 3 Band EQ, AMF Slider, Mic. Vol, PHASE SW, Volume



CPX8M

CPX8M
Top: Solid Cedar
Back & Sides: Mahogany
Neck: Nato
Fingerboard: Rosewood
Bridge: Rosewood
Body Depth: 95-115mm (3-3/4"-4-1/2")
String Scale: 650mm (25-9/16")
Tuning Machines: Diecast Gold
P.U. System: System45 2way (piezo + mic.)
Electronics: 3 Band EQ, AMF Slider, Mic. Vol, PHASE SW, Volume



CPX5
Top: Spruce
Back & Sides: Nato
Neck: Nato
Fingerboard: Rosewood
Bridge: Rosewood
Body Depth: 95-115mm (3-3/4"-4-1/2")
String Scale: 650mm (25-9/16")
Tuning Machines: Diecast Chrome
P.U. System: System 39 1 way
Electronics: 3 Band EQ, AMF, Mid Shape SW
Color: Yellow Natural (YN), Black (BL), Translucent Blue Burst (TBB), Violin Sunburst (VS)



Controls (CPX5)
The electronics section features a three band equalizer with an adjustable midrange frequency for added control of the overall sound of the guitar. The Mid Shape Switch offers a choice between Natural and Hard tone settings. The Hard setting boosts Mid and Low frequencies producing a powerful sound.



CPX15
Top: Solid Spruce
Back & Sides: Rosewood
Neck: Mahogany
Fingerboard: Ebony
Bridge: Ebony
Body Depth: 95-115mm (3-3/4"-4-1/2")
String Scale: 650mm (25-9/16")
Tuning Machines: Diecast Gold
P.U. System: System 40 2 way
Electronics: 4 Band EQ, AMF, Blend

CPX15W

WEST
Back and sides of walnut along with the solid spruce top are finished in an Antique Violin Sunburst creating the backdrop for this scene from the American West. Interlocking longhorn design with concho belt inlays of pearl and turquoise illustrate the rugged spirit and style of this well-known era.



CPX15W
Top: Solid Spruce
Back & Sides: Walnut
Neck: Mahogany
Fingerboard: Ebony
Bridge: Ebony
Body Depth: 95-115mm (3-3/4"-4-1/2")
String Scale: 650mm (25-9/16")
Tuning Machines: Diecast Gold
P.U. System: System 40 2 way
Electronics: 4 Band EQ, AMF, Blend



Bracing
Bracing is a critical factor in the overall tone produced by the guitar. The Compass series' use of an X bracing design with placement closer to the sound hole affording greater bass response from the instrument.



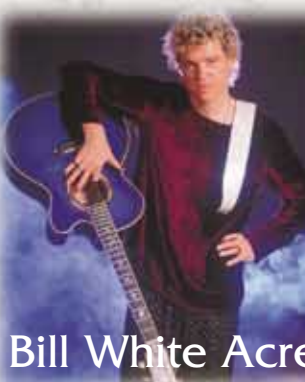
David Pack

CPX15S

SOUTH
Back and sides of white sycamore and a solid spruce top are covered with an Miami Ocean Blue finish that turn the CPX15S's body into the depths of a tropical sea. Swimming playfully toward this sea is a pair of porpoises in mother of pearl adorning the neck. In the center of this paradise lies an island of multi wood palm tree inlay.



CPX15S
Top: Solid Spruce
Back & Sides: White Sycamore
Neck: Mahogany
Fingerboard: Ebony
Bridge: Ebony
Body Depth: 95-115mm (3-3/4"-4-1/2")
String Scale: 650mm (25-9/16")
Tuning Machines: Diecast Gold
P.U. System: System 40 2 way
Electronics: 4 Band EQ, AMF, Blend



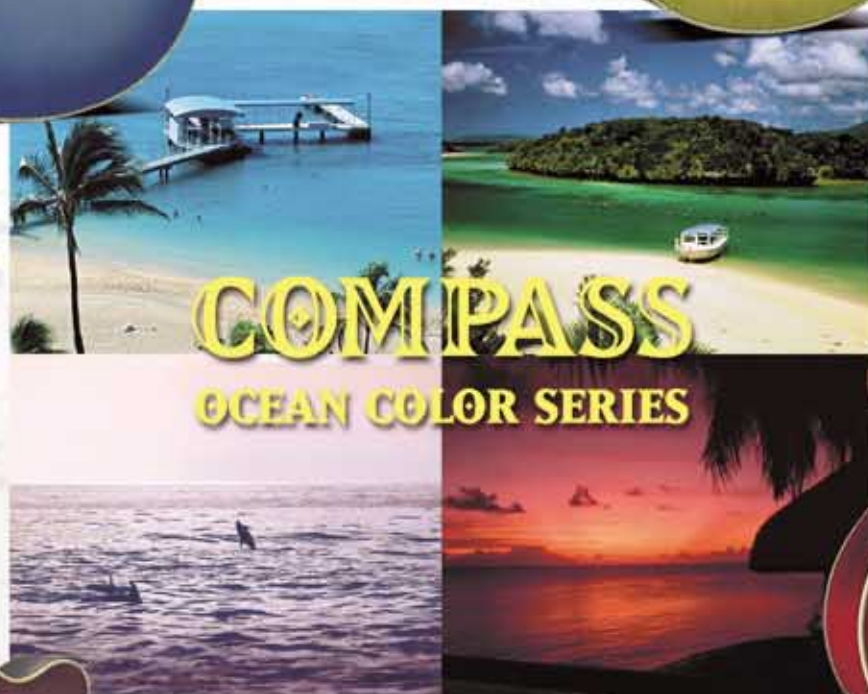
Bill White Acre



MSV

CPX8SY/8/8M/8-12 Controls

The CPX series feature a 2-way pickup system consisting of a piezo pickup mounted in the bridge and a condenser microphone attached to a gooseneck mounted inside the body. While the piezo system reproduces string vibration, the microphone is used to pickup the guitar's acoustic tone produced within the body. The electronics section places a 3-band equalizer with an adjustable midrange frequency right at your fingertips for flexible control of the instrument's sound. A separate control for the microphone's volume allows you to get the perfect mix between the two pickup systems.



COMPASS
OCEAN COLOR SERIES