

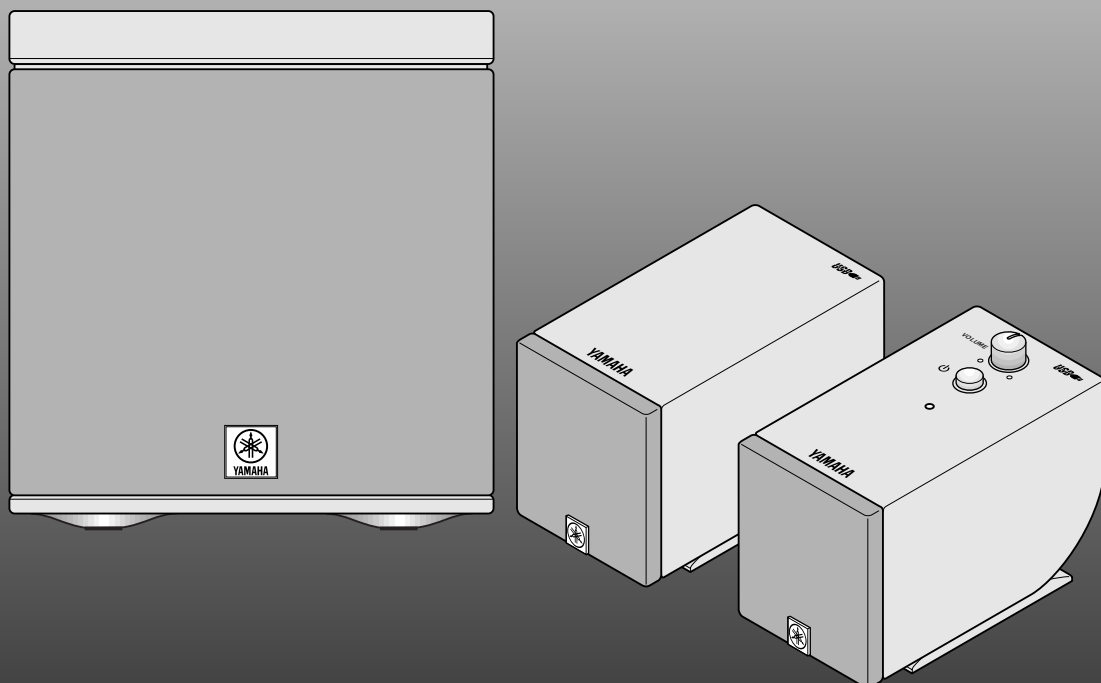


POWERED MULTIMEDIA SPEAKERS

# YST-MS35D



OWNER'S MANUAL . . .	1
MODE D'EMPLOI . . . .	11





**WARNING**  
TO REDUCE THE RISK OF FIRE OR ELECTRIC SHOCK, DO NOT EXPOSE THIS UNIT TO RAIN OR MOISTURE.

• Explanation of Graphical Symbols




The lightning flash with arrowhead symbol, within an equilateral triangle, is intended to alert you to the presence of uninsulated "dangerous voltage" within the product's enclosure that may be of sufficient magnitude to constitute a risk of electric shock to persons.



The exclamation point within an equilateral triangle is intended to alert you to the presence of important operating and maintenance (servicing) instructions in the literature accompanying the appliance.

**IMPORTANT!**  
Please record the serial number of this unit in the space below.  
Model:  
Serial No.:  
The serial number is located on the rear of the unit.  
Retain this Owner's Manual in a safe place for future reference.

# SAFETY INSTRUCTIONS

- 1 Read Instructions — All the safety and operating instructions should be read before the unit is operated.
- 2 Retain Instructions — The safety and operating instructions should be retained for future reference.
- 3 Heed Warnings — All warnings on the unit and in the operating instructions should be adhered to.
- 4 Follow Instructions — All operating and other instructions should be followed.
- 5 Water and Moisture — The unit should not be used near water – for example, near a bathtub, wash-bowl, kitchen sink, laundry tub, in a wet basement, or near a swimming pool, etc.
- 6 Carts and Stands — The unit should be used only with a cart or stand that is recommended by the manufacturer.
- 6A An unit and cart combination should be moved with care. Quick stops, excessive force, and uneven surfaces may cause the unit and cart combination to overturn. 
- 7 Wall or Ceiling Mounting — The unit should be mounted to a wall or ceiling only as recommended by the manufacturer.
- 8 Ventilation — The unit should be situated so that its location or position does not interfere with its proper ventilation. For example, the unit should not be situated on a bed, sofa, rug, or similar surface, that may block the ventilation openings; or placed in a built-in installation, such as a bookcase or cabinet that may impede the flow of air through the ventilation openings.
- 9 Heat — The unit should be situated away from heat sources such as radiators, stoves, or other appliances that produce heat.
- 10 Power Sources — The unit should be connected to a power supply only of the type described in the operating instructions or as marked on the unit.
- 11 Power-Cord Protection — Power-supply cords should be routed so that they are not likely to be walked on or pinched by items placed upon or against them, paying particular attention to cords at plugs, convenience receptacles, and the point where they exit from the unit.
- 12 Cleaning — The unit should be cleaned only as recommended by the manufacturer.
- 13 Nonuse Periods — The power cord of the unit should be unplugged from the outlet when left unused for a long period of time.
- 14 Object and Liquid Entry — Care should be taken so that objects do not fall into and liquids are not spilled into the inside of unit.
- 15 Damage Requiring Service — The unit should be serviced by qualified service personnel when:
  - A. The power-supply cord or the plug has been damaged; or
  - B. Objects have fallen, or liquid has been spilled into the unit; or
  - C. The unit has been exposed to rain; or
  - D. The unit does not appear to operate normally or exhibits a marked change in performance; or
  - E. The unit has been dropped, or the enclosure damaged.
- 16 Servicing — The user should not attempt service the unit beyond those means described in the operating instructions. All other servicing should be referred to qualified service personnel.
- 17 Power Lines — An outdoor antenna should be located away from power lines.

- 18** Grounding or Polarization — Precautions should be taken so that the grounding or polarization is not defeated.

## COMPLIANCE INFORMATION STATEMENT (DECLARATION OF CONFORMITY PROCEDURE)

Responsible Party:	Yamaha Corporation of America
Address:	6600 Orangethorpe Ave. Buena Park, CA90622
Telephone:	714-522-9011
FAX:	714-527-5782
Type of Equipment:	Powered Multimedia Speakers
Model Name:	YST-MS35D

This device complies with Part 15 of the FCC Rules.

Operation is subject to the following conditions:

- 1) this device may not cause harmful interference, and
  - 2) this device must accept any interference received including interference that may cause undesired operation.
- See user manual instructions if interference to radio reception is suspected.

### FCC INFORMATION (U.S.A)

**1. IMPORTANT NOTICE: DO NOT MODIFY THIS UNIT!**

This product, when installed as indicated in the instructions contained in this manual, meets FCC requirements. Modifications not expressly approved by Yamaha may void your authority, granted by the FCC, to use the product.

**2. IMPORTANT:** When connecting this product to accessories and/or another product use only high quality shielded cables. Cable/s supplied with this product **MUST** be used. Follow all installation instructions. Failure to follow instructions could void your FCC authorization to use this product in the USA.

**3. NOTE:** This product has been tested and found to comply with the requirements listed in FCC Regulations, Part 15 for Class "B" digital devices. Compliance with these requirements provides a reasonable level of assurance that your use of this product in a residential environment will not result in harmful interference with other electronic devices. This equipment generates/uses radio frequencies and, if not installed and used according to the instructions found in the users manual, may cause interference harmful to the operation of other electronic devices. Compliance with FCC regulations does not guarantee that interference will not occur in all installations. If this product is found to be the source of interference, which can be determined by turning the product "OFF" and "ON", please try to eliminate the problem by using one of the following measures:

Relocate either this product or the device that is being affected by the interference.

Utilize power outlets that are on different branch (circuit breaker or fuse) circuits or install AC line filter/s.

In the case of radio or TV interference, relocate/reorient the antenna. If the antenna lead-in is 300 ohm ribbon lead, change the lead-in to coaxial type cable.

If these corrective measures do not produce satisfactory results, please contact the local retailer authorized to distribute this type of product. If you can not locate the appropriate retailer, please contact Yamaha Corporation of America 6600 Orangethorpe Ave. Buena Park, CA90622, U.S.A.

### FOR CANADIAN CUSTOMERS

TO PREVENT ELECTRIC SHOCK, MATCH WIDE BLADE OF PLUG TO WIDE SLOT AND FULLY INSERT.

THIS CLASS B DIGITAL APPARATUS COMPLIES WITH CANADIAN ICES-003.

### POUR LES CONSOMMATEURS CANADIENS

POUR ÉVITER LES CHOCs ÉLECTRIQUES, INTRODUIRE LA LAME LA PLUS LARGE DE LA FICHE DANS LA BORNE CORRESPONDANTE DE LA PRISE ET POUSSER JUSQU'AU FOND.

CET APPAREIL NUMÉRIQUE DE LA CLASSE B EST CONFORME À LA NORME NMB-003 DU CANADA.

## We Want You Listening For A Lifetime

YAMAHA and the Electronic Industries Association's Consumer Electronics Group want you to get the most out of your equipment by playing it at a safe level. One that lets the sound come through loud and clear without annoying blaring or distortion – and, most importantly, without affecting your sensitive hearing.

Since hearing damage from loud sounds is often undetectable until it is too late, YAMAHA and the Electronic Industries Association's Consumer Electronics Group recommend you to avoid prolonged exposure from excessive volume levels.



---

## Cautions

Please read the following operating precautions before use:

- When you disconnect the AC adapter from the AC receptacle, hold the plug, not the cord.
- If you plan not to use the YST-MS35Ds for a while, disconnect the AC adapter from the AC receptacle.
- Always disconnect the AC adapter from the AC receptacle before making any connections.
- The YST-MS35Ds do not contain any user serviceable parts. Refer all servicing to your Yamaha dealer.
- **Never open the cabinet.** If a foreign object drops into the set, contact your dealer, and do not use the YST-MS35Ds. Otherwise, you may cause a fire.
- Do not expose the YST-MS35Ds to temperature extremes, direct sunlight, excessive dust, humidity, or vibration.
- Position the YST-MS35Ds on a level, stable surface. Do not drop the YST-MS35Ds, apply excessive force to their controls, or put heavy items on top of them.
- Do not place small metal objects on the speakers. Otherwise, the object may fall, possibly causing an injury.
- Since this unit has a built-in power amplifier, heat will radiate from the rear panel. Therefore, place the unit away from walls, allowing enough space above, behind, and on both sides of the unit. Also, do not position with the rear panel facing down on the floor or other surface. (Subwoofer only)
- Do not obstruct the port with your hand or a foreign object.
- To protect the YST-MS35D speakers, avoid microphone feedback, continuous and excessive output from electronic musical instruments, and excessive signal distortion.
- If the YST-MS35Ds are located close to fluorescent or neon lights, a slight hum may be heard. In this case, relocate the YST-MS35Ds away from the light.
- Although the YST-MS35D speakers are magnetically shielded, keep floppy disks and tapes away from them.
- The YST-MS35Ds may cause picture distortion when located close to a television or computer monitor. In this case, move them away a short distance.
- Avoid sources of hum (transformers, motors). To prevent fire or electrical shock, do not expose to rain and water.
- Do not use force on switches, knobs, or cables. When you move the YST-MS35D, first turn off the power to the speakers, then disconnect the AC adapter from the AC receptacle and the cables from the connected devices.
- Always turn the volume control counterclockwise to the minimum before starting to play the audio source: increase the volume gradually to an appropriate level after the playback has started.

Intel and Pentium are registered trademarks and MMX is a trademark of Intel Corporation. Windows is a registered trademark of Microsoft Corporation in the United States and/or other countries. All other trademarks are property of their respective owners.

---

## Table of Contents

<b>Cautions</b> .....	1
<b>Introducing the YST-MS35D Speaker System</b> .....	2
<b>System Requirements</b> .....	2
<b>Controls &amp; Connectors</b> .....	3
<b>Installing and verifying the YST-MS35D speaker device drivers</b> .....	4
Installing the device drivers .....	4
Verifying the installation of device drivers.....	5
Re-installing the Device Driver .....	6
Ensuring the output of audio data from the USB port.....	7
<b>Connecting to a non-USB system</b> .....	8
<b>Enjoying your YST-MS35D Speaker System</b> .....	8
Adjusting the Volume, Bass, and Treble.....	8
Playing Music CDs.....	8
<b>Troubleshooting</b> .....	9
<b>Speaker angle and Non skid pad</b> .....	10
<b>Specifications</b> .....	10

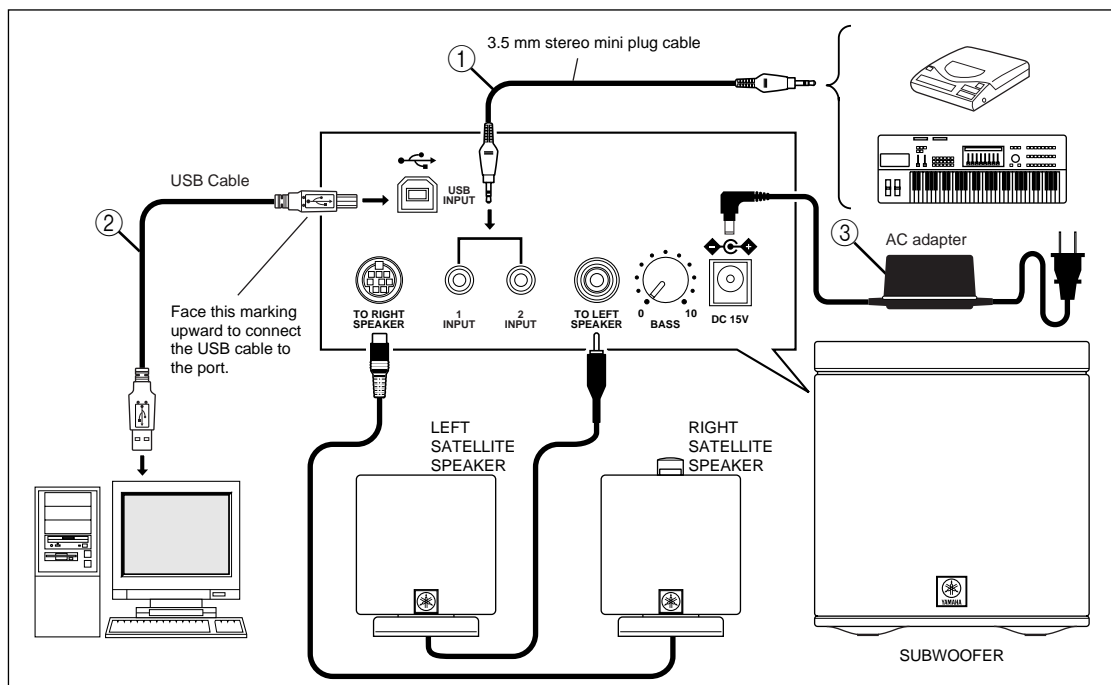
## Introducing the YST-MS35D Speaker System

Thank you for purchasing the Yamaha YST-MS35D Powered Multimedia Speakers.

The YST-MS35D Multimedia Speakers utilize Advanced Yamaha Active Servo Technology, which offers exceptionally high performance, allowing these compact speakers to produce a rich bass sound. They also employ USB technology to create a computer-based listening environment that is far superior to conventional multimedia speakers. They reproduce a clearer sound, with less noise and distortion, and never require a soundcard!

The YST-MS35D includes three speaker components: a left satellite speaker, a right satellite speaker, and a subwoofer.

**Notes:** Do not connect the PC and the subwoofer using the USB cable before installing the YST-MS35D speaker device driver.



- ① 3.5 mm stereo mini plug cable × 1 (Accessory)
- ② USB cable × 1 (Accessory)
- ③ AC adapter × 1 (Accessory)

The package also contains a CD-ROM and eight non-skid pads to attach to the bottom of the satellite speakers.

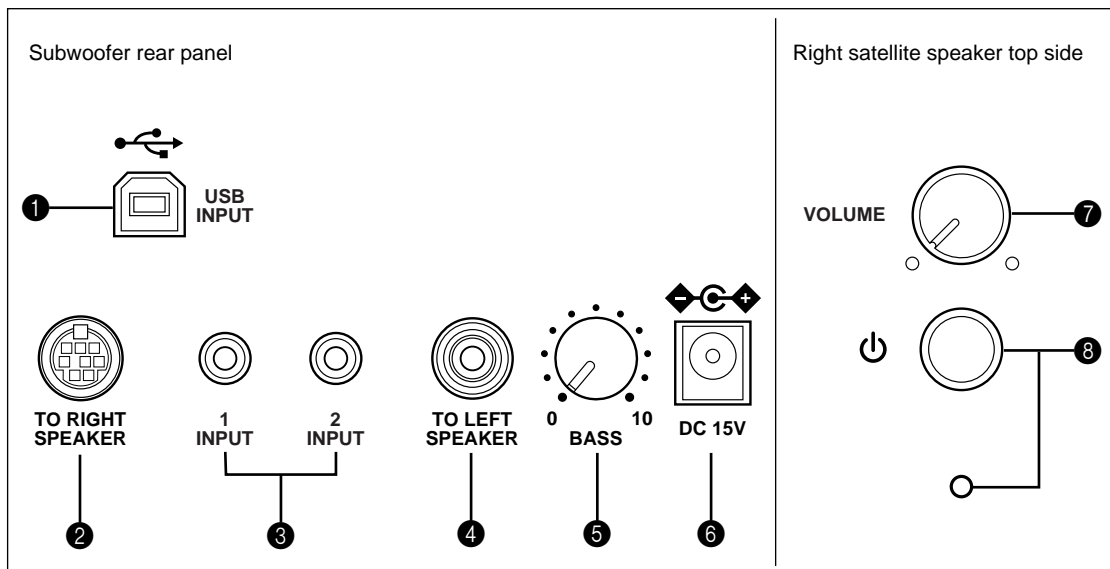
**Warning:** Please inspect the package contents thoroughly for damage. If any item is missing or damaged, please contact the dealer from whom you purchased the YST-MS35D.

## System Requirements

*For digital audio streaming using a USB connection:*

- OS: Microsoft Windows 98
- CPU: 200 MHz or faster Intel Pentium MMX processor or equivalent
- HDD: At least 10 MB available space
- CD-ROM drive for driver installation
- USB port compatible with USB standards ver 1.0

## Controls & Connectors



### 1 USB INPUT

Use the included USB cable to connect this port to the USB port on the computer.

### 2 TO RIGHT SPEAKER

Connect the 8-pin cable from the right satellite speaker to this connector.

### 3 INPUT 1/2

You can input two audio sources to the speaker system from these input jacks. For example, you can connect the output of a CD-ROM player and a personal computer here. The two audio sources are mixed together by the speaker system.

### 4 TO LEFT SPEAKER

Connect the RCA plug cable from the left satellite speaker to this connector.

### 5 BASS control

Allows you to adjust the volume level of the subwoofer.

A typical (recommended) setting is the position between one o'clock and two o'clock.

Rotating the control clockwise will increase the volume level, and rotating the control counter-clockwise will decrease the level.

### 6 DC connector

Connect the included AC adapter to this connector. Press the  $\phi$  (standby/on) button on the right satellite speaker to turn the power on or standby.

### 7 VOLUME control

Allows you to adjust the volume level of the entire speaker system.

Rotating the control clockwise will increase the volume level, and rotating the control counter-clockwise will decrease the level.

### 8 $\phi$ (standby/on) button/indicator

Press this button to turn on the power to the speaker system. Its indicator lights up. Press the button again to turn the speaker system to standby mode.

Before pressing this button, make sure that the VOLUME control setting is lowered. A small electrical current flows through the speaker system even if the standby/on button is turned off.

---

## Installing and verifying the YST-MS35D speaker device drivers

Please follow these steps to install the Yamaha YST-MS35D speaker device drivers in your Windows 98 system using the included CD-ROM, and verify that Windows 98 recognizes the installed device drivers and that CD audio, sound generated while using software, and system sounds from the computer will be output via the USB port.

---

### Installing the device drivers

**Notes:**

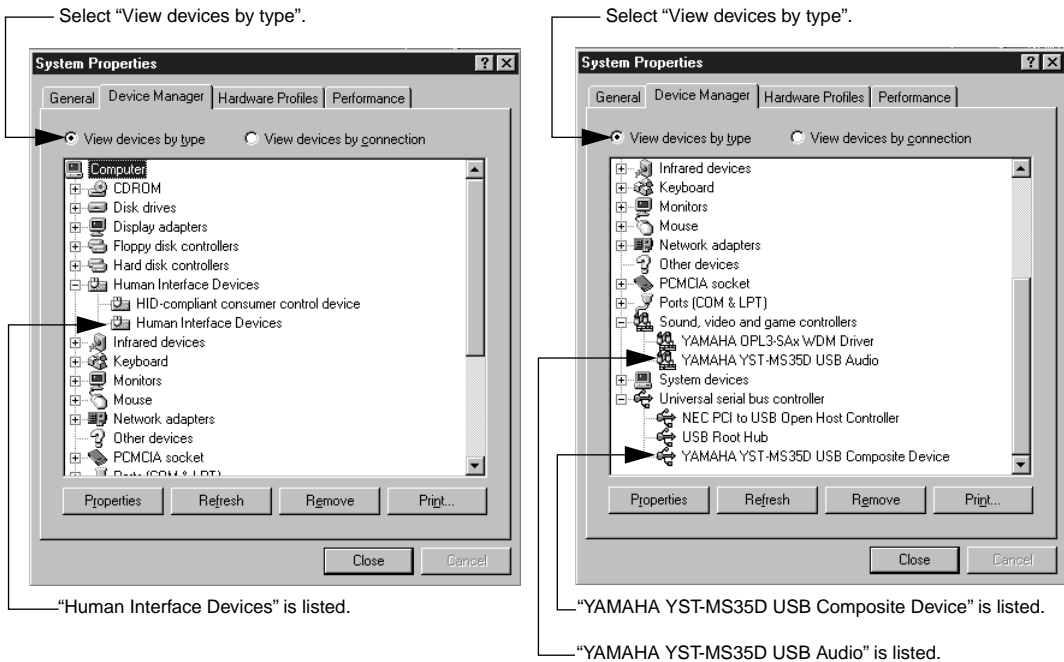
- **Do not connect the PC and the subwoofer using the USB cable before installing the YST-MS35D device drivers. If you accidentally connect them, refer to “Re-installing the Device Driver” on page 6.**
- Before starting, check the “System Requirements” section to see if your PC supports YST-MS35D.
- Make sure that no other CD-ROM is loaded in the CD-ROM drive and that you quit all application programs.
- Have your Windows 98 CD-ROM ready when you install the Yamaha YST-MS35D speaker device drivers. You may need it in some cases.
- The installation procedure may differ from the following instructions depending on the system environment. Follow the instructions that appear in the dialog box. Please contact your computer’s manufacturer or dealer if you have any questions.

1. **Connect the YST-MS35D speakers as shown in the diagram on page 2 and connect the AC adapter to the AC receptacle. At this time, do not connect the subwoofer to the computer using the USB cable.**
2. **Turn on your PC and, if it’s not running already, start Windows 98.**
3. **Insert the YAMAHA YST-MS35D CD-ROM into the CD-ROM or DVD-ROM drive.**  
If the Windows 98 Autorun feature is turned on, the installation start up screen appears automatically.
4. **Continue with the installation as prompted.**  
If the Windows 98 Autorun feature is not turned on, you must start the installation manually, as explained below.
5. **Double-click the My Computer icon.**  
The My Computer window opens.
6. **Double-click the “Yamaha” CD-ROM icon.**  
The installation start up screen appears.
7. **Continue with the installation as prompted.**
8. **After the installation is completed, connect the subwoofer to the computer using the USB cable.**

## Verifying the installation of device drivers

After you have installed the device drivers as explained in the previous section, follow the steps below to verify that Windows 98 recognizes these drivers.

1. Select “Start,” then select “Settings-->Control Panel” from the menu.
2. Double-click “System” in the control Panel to display the “System Properties” panel, select the “Device Manager” tab, then select “View devices by type.”
3. Click the plus sign (+) for “Human Interface Devices,” “Sound, video and game controllers,” and “Universal Serial Bus Controller” in the device list, and check to see if “Human Interface Devices,” “YAMAHA YST-MS35D USB Audio,” and “YAMAHA YST-MS35D USB Composite Device” are listed respectively.



- The contents of the list on the display shown above may vary depending on the system environment.

**Note:** If the letter an exclamation point (!), or a question mark (?) appears to the left of the USB device name, check the following:

1. Make sure that you have installed the drivers from the included CD-ROM.
2. Check to see if the USB cable is connected securely.
3. The AC adapter plug is connected to the AC receptacle.

If these actions do not resolve the situation, refer to your Windows documentation or ask your computer dealer to enable the USB port.



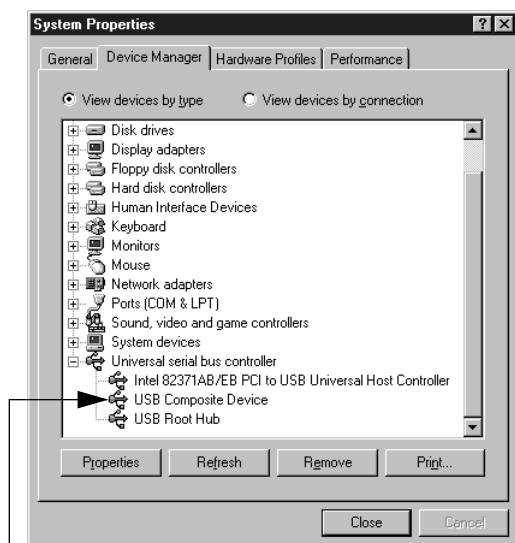
## Re-installing the Device Driver

If you connect the PC and the YST-MS35D via the USB ports using the USB cable before you install the included application software, the YST-MS35D device driver will not recognize the devices correctly, and will display the following items in the “System Properties” window:

- USB Audio Device in the list of “Sound, video and game controllers”
- USB Composite Device in the list of “Universal serial bus controller”

To recognize the devices correctly, re-install the driver following the steps below:

1. **Make sure the YST-MS35D is connected to the PC via the USB cable.**
2. **Click the “+” symbol next to “Universal serial bus controller” to display the list.**
3. **Make sure that “USB Composite Device” appears in the list and click to select it.**



“USB Composite Device” is listed.

4. **Click [Remove].**

The dialog shown below appears. Click [OK].

“USB Audio Device” will be deleted.



5. **Make sure that “USB Composite Device” has been deleted from the list of “Universal serial bus controller.”**
6. **Disconnect the USB cable.**
7. **Insert the included CD-ROM into the CD-ROM drive and re-install the device driver.**
8. **Check the device driver. Refer to “Verifying the installation of device drivers” on page 5.**

## Ensuring the output of audio data from the USB port

Follow the steps below to ensure that the USB port on your computer is ready to output CD audio.

1. Select “Start,” then select “Settings-->Control Panel” from the menu.
2. Double-click “Multimedia” icon in the Control Panel to display the “Multimedia Properties” window, and under “Playback” in the “Audio” tab, make sure that “YAMAHA YST-MS35D USB Audio” is selected as the “Preferred device.”

(Depending on the computer, if multiple USB audio devices are connected, the number of devices may appear in parentheses.)

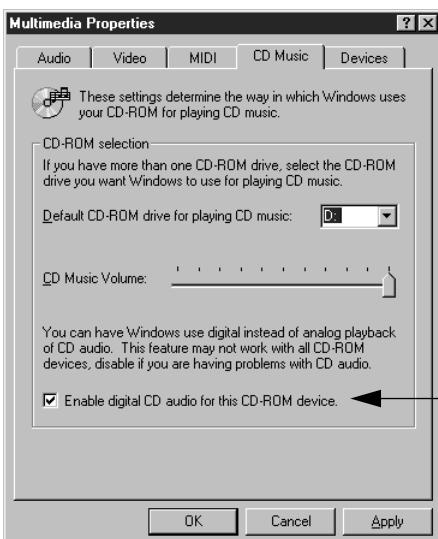


“YAMAHA YST-MS35D USB Audio” selected as Preferred device

- The contents of the list on the display shown left may vary depending on the system environment.

3. Select the “CD Music” tab, make sure that the text below the “CD Music Volume” is Active, and check “Enable digital CD audio for this CD-ROM device.”

If the text below “CD Music Volume” appears in gray, you cannot check the “Enable digital CD audio for this CD-ROM device” box. In this case, your CD-ROM drive may not be supported. Consult your computer manufacturer or dealer.



Enable digital CD audio for this CD-ROM device

- The contents of the list on the display shown left may vary depending on the system environment.

**Now you are ready to enjoy your YST-MS35D Speaker System!**

---

## Connecting to a non-USB system

You can input analog audio signals into Inputs 1 and 2 (3.5 mm stereo input jacks) on the rear of subwoofer and use the YST-MS35D system like conventional multimedia speakers. (For example, you can connect the outputs from a soundcard.)

Some game software programs do not support USB. In this case, instead of using the USB connection, connect Input 1 or 2 on the subwoofer to the audio output jack on your PC using a 3.5mm stereo mini plug cable. Also, specify your sound card type as the “Preferred device” under “Playback” in the “Audio” tab on the “Multimedia Properties” panel.

---

## Enjoying your YST-MS35D Speaker System

---

### Adjusting the Volume, Bass, and Treble

First adjust the volume levels, bass, and treble using software controls (such as the Windows 98 Volume Control panel). After adjustment, use the VOLUME control on the right satellite speaker to set the volume level of the speakers, and use the BASS control on the subwoofer to adjust the low range.

---

### Playing Music CDs

First, make sure that the speaker system is turned on.

1. Select the “Start” button, “Settings,” then “Control Panel.”
2. Double-click the “Multimedia” icon in the “Control Panel.”
3. Select “Multimedia Properties,” then the “Audio” tab.
4. Select “YAMAHA YST-MS35D USB Audio” as the preferred device setting for playback.
5. Select the “CD Music” tab.
6. If multiple CD-ROM drives appear in the “Default CD-ROM drive for playing CD music,” select the CD-ROM drive that you will use to play music CDs.
7. Adjust the volume level of the music CD.
8. Make sure that the check box for “Enable digital CD audio for this CD-ROM device” is checked.  
If Windows 98 disables this box, your CD-ROM drive does not support digital audio. Consult your computer or CD-ROM drive documentation, or ask your computer dealer for assistance.
9. Follow the instruction on the manual for the corresponding application program to enjoy the speaker sound.

# Troubleshooting

If the speakers fail to operate normally, check the following table. It lists common operation errors and simple measures that you can take to correct problems. If a problem cannot be corrected, or the symptom is not listed, disconnect the AC adapter and contact your authorized YAMAHA dealer or service center for help.

FAULT	CAUSE	CURE
The speakers are recognized as an "unknown device" by the computer.	The USB cable is not connected securely.	Remove the USB cable from the speaker and computer, then re-connect it securely. Also, turn off and on the power to the speakers.
	You did not complete the Device Driver Install procedure correctly.	Turn off the power to the speakers, remove the USB cable, then turn on the power to the speaker again. If the Device Driver is still not recognized, re-install it.
No sound comes from the speakers or subwoofer.	The AC adapter is not properly plugged into the AC receptacle.	Insert the AC adapter firmly into the AC receptacle.
	The $\phi$ (standby/on) button on the right satellite speaker is turned off or the AC adapter is not plugged into the AC receptacle and the DC connector completely.	Plug the AC adapter completely into the AC receptacle and DC connector, then turn on the $\phi$ (standby/on) button on the right speaker.
	The volume is set to minimum.	Turn the speaker VOLUME control to the right to increase the volume.
	The level of the input signal is too low.	Turn up the volume on the connected device.
	Connections are faulty or incomplete.	Make the connections again, firmly, or use a different cable.
	You are using a slow-speed USB cable.	Make sure you use the USB cable included in the package or an equivalent high-speed USB cable.
	Windows 98 is not installed on the computer.	Install Windows 98.
	The "mute" option is selected in the software volume control in Windows 98.	Cancel "mute" in the software volume control in Windows 98.
	"YAMAHA YST-MS35D USB Audio" is not listed under "Sound, video and game controllers" or "YAMAHA YST-MS35D USB Composite Device" is not listed under "Universal serial bus controller" or "Human Interface Devices" in the Device Manager.	Restart the PC. If it does not still work, re-install the device driver.
	The current CD-ROM drive is not specified as the "Default CD-ROM drive for playing CD music" in the "CD Music" tab of the "Multimedia Properties" panel.	Select the drive with which you want to play CDs.
The volume settings in Windows 98 are not appropriate.		From the [Start] menu, select [Programs]-->[Accessories]-->[Entertainment]-->[Volume Control], and adjust the volume settings to appropriate levels.
		Raise the volume bars shown in the "CD Music Volume" display on the "CD Music" tab in "Multimedia Properties."
The bass sound can not be heard.	The BASS control is set to minimum.	Turn the subwoofer BASS control to the right to increase the volume.
Sound is distorted.	The level of the input signal is too high.	Turn down the volume on the connected device.
Noise.	Connections are faulty or incomplete.	Make the connections again, firmly, or use a different cable.

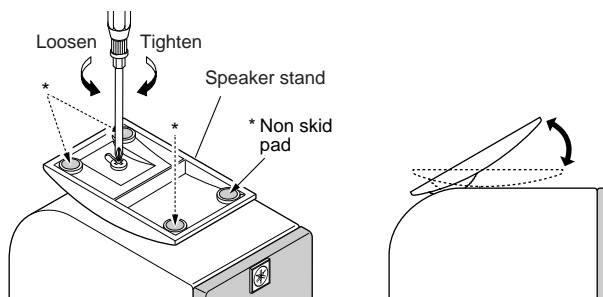
**Note 1:** USB ports are delicate. Handle them with care. Do not insert USB plugs forcefully or you may damage the port.

**Note 2:** For more information on issues related to Windows 98, consult the Windows 98 manual or your computer dealer.

## Speaker angle and Non skid pad

You can adjust the speaker angle. Loosen the screw on the bottom of the speaker stand as shown in the figure, adjust the angle of the stand, and tighten the screw to fix the stand.

To prevent the speakers from sliding around, attach the supplied pads to the four points on the bottom of each satellite speaker. Place the speaker on a stable, flat surface.



## Specifications

<b>Type</b>	Advanced Yamaha Active Servo Technology
<b>Output power</b>	Satellite..... 6 W + 6 W (1 kHz, 4Ω at T.H.D.=10%) Subwoofer..... 18 W (100 Hz, 4Ω at T.H.D.=10%)
<b>Input sensitivity</b>	200 mV (1 kHz, 4Ω at 6 W)
<b>Input impedance</b>	20 kΩ
<b>Frequency response</b>	45 Hz to 20 kHz (Satellite + Subwoofer)
<b>Crossover Frequency</b>	Satellite/Subwoofer 180 Hz
<b>Input Section</b>	Subwoofer..... 3.5 mm stereo mini jack for audio-signal × 2 USB digital × 1
<b>Output Section</b>	Subwoofer..... RCA pin jack connected to left satellite speaker 8 pin jack connected to right satellite speaker
<b>Driver</b>	Satellite..... 5 cm (2") cone, magnetic shielding Subwoofer..... 12 cm (5") cone, magnetic shielding
<b>Power supply</b> (AC adapter)	U.S.A. and Canada models..... AC 120 V, 60 Hz Australia model ..... AC 240 V, 50 Hz U.K. and Europe models ..... AC 230 V, 50 Hz
<b>Dimensions</b> (W × H × D)	Satellite speakers ..... 65 (2.6") × 75 (3") × 119 (4.7") mm Subwoofer..... 183 (7.2") × 196 (7.7") × 183 (7.2") mm
<b>Weight</b>	Satellite speakers ..... Right: 0.45 kg (1 lb.), Left: 0.36 kg (13 oz.) Subwoofer..... 2.3 kg (5 lbs. 1 oz.)
<b>Accessories</b>	AC adapter × 1 3.5 mm stereo mini plug cable × 1 (1.8 m) USB cable × 1 (2 m) 8 pcs of non skid pads × 1 set, CD-ROM × 1

\* Specifications subject to change without notice.

Please contact an authorized Yamaha dealer for more information on this product or connections to your computer.

