

Using the Rhapsody® service

The Rhapsody® service is available in the U.S.A. only.

Prohibition

- It is strictly prohibited to modify, reproduce, reverse-engineer or use this unit and/or built-in software for use other than audiovisual purposes.

The Rhapsody® service is the power behind the Rhapsody® Media Player (the Rhapsody® player software that you can download to your computer). Rhapsody® service supplies the music, keeps My Library up to date, provides you with Rhapsody® channels, the Playlist Central online community, and manages your downloads. Your software connects to Rhapsody® service through the internet. Because your account information and Rhapsody® content are on servers instead of any individual computer, your music is infinitely portable. Much of what you see in the Display area comes from Rhapsody® service. What you can do with Rhapsody® service depends on your subscription. You can use Rhapsody® service for free, or get even more from a paid membership. The Rhapsody® service also brings you Rhapsody® Online, a streamlined, internet version of Rhapsody® that you can access from almost anywhere. Just sign in to your Rhapsody® account to start letting the Rhapsody® service work for you.

For more information, <http://www.rhapsody.com/>



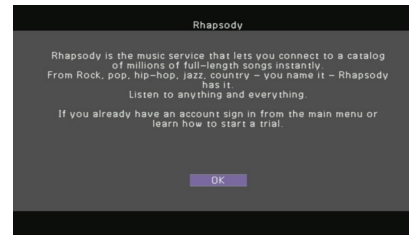
- To use this function, this unit must be connected to the Internet. For detail on connections and network settings, refer to “Owner’s Manual”.
- If any error message appears on the front display, see “Error indications on the front display” in “Owner’s Manual”.
- The actual display may be partly different from display images used on this document depending on the model.

Rhapsody® account sign-in

If you have not signed in to your Rhapsody account yet, the sign-in screen appears when you select “Rhapsody”. To start using the Rhapsody service on this unit, follow the procedure below to sign in to your Rhapsody account.

1 Press NET repeatedly to select “Rhapsody” as the input source.

The following screen is displayed on the TV if you have not signed in to your Rhapsody account yet.



2 Read the description and press ENTER.

3 Use the cursor keys (Δ/▽) to select “Sign In” and press ENTER.

To get started with a 30-day free trial, select “Rhapsody Trial” and register for a trial account in the specified website.

4 Press ENTER to enter the user name entry screen.

5 Use the cursor keys and ENTER to enter your user name and select “OK”.

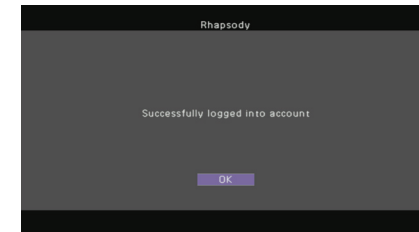


- To clear the entry, select “CLEAR”.

6 Press ENTER to enter the password entry screen.

7 Use the cursor keys and ENTER to enter your password and select “OK”.

The following screen appears if you have successfully logged into your account.



- If sign-in failed, the error screen appears. In this case, read the on-screen message and start all over again.

8 Press ENTER.

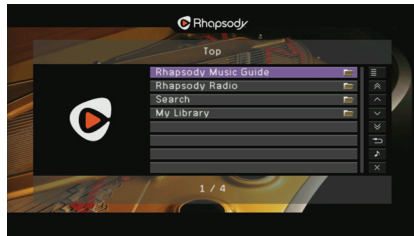
The browse screen is displayed on the TV.

Playback of Rhapsody® contents

Follow the procedure below to operate the Rhapsody contents and start playback.

1 Press NET repeatedly to select “Rhapsody” as the input source.

The browse screen is displayed on the TV.



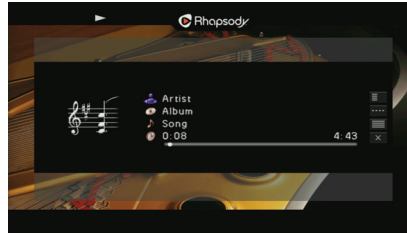
Rhapsody Music Guide	Select a song from the lists organized by category (artist, album, etc).
Rhapsody Radio	Select a network radio channel from the lists of the channels provided by Rhapsody.
Search	Use the software keyboard to search the desired item (artist, album, etc.) by keyword.
My Library	Select a track from items (artist, album, etc.) added to “My Library”.



- If playback of any Rhapsody content is ongoing, the playback screen is displayed.

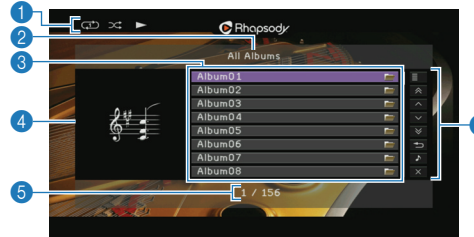
2 Use the cursor keys to select an item and press ENTER.

If a song or a radio channel is selected, playback starts and the playback screen is displayed.



- To return to the previous screen, press RETURN.
- You can register your favorite items as shortcuts and access them directly by selecting the shortcut numbers. For details, see “Registering favorite items (shortcut)” in “Owner’s Manual”.

Browse screen



1 Status indicators

Display the current shuffle/repeat settings and playback status (play/pause).

2 List name

3 Contents list

Displays the list of Rhapsody contents. Use the cursor keys to select an item and press ENTER to confirm the selection.

4 Album image

5 Item number/total

6 Operation menu

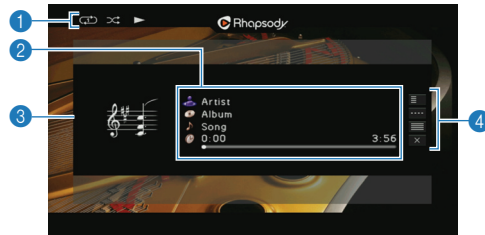
Use the cursor keys to select an item and press ENTER to confirm the selection.
To close the submenu, press RETURN.

Menu	Submenu	Function
	Play	Starts playback of the selected song/album or radio channel.
	Add track to My Library	Adds the song selected in the list to “My Library”.
Utility	Add album to My Library	Adds the album selected in the list to “My Library”.
	Add CH to My Library	Adds the Rhapsody Radio channel selected in the list to “My Library”.
1 Page Up		Moves to the previous/next page of the list.
1 Page Down		
10 Pages Up		Moves to 10 pages forward/backward.
10 Pages Down		
Return		Returns to the higher-level list.
Now Playing		Moves to the playback screen.
Screen Off		Closes the screen display and shows the background. Press one of the menu operation keys to redisplay it.



- By adding your favorite Rhapsody contents to “My Library”, you can access to them quickly from “My Library”. To remove items from “My Library”, select the item in “My Library” and then “Remove from My Library” in “Utility”.
- Submenus available in “Utility” vary depending on the list.

■ Playback screen



1 Status indicators

Display the current shuffle/repeat settings and playback status (play/pause).

2 Playback information

Displays the artist name, album name, song title and elapsed/total time.
Use the cursor keys to select information to be scrolled.

3 Album image

4 Operation menu

Use the cursor keys to select an item and press ENTER to confirm the selection.
To close the submenu, press RETURN.

Menu	Submenu	Function
Utility	Add track to My Library	Adds the current song to "My Library".
	Add album to My Library	Adds the current album to "My Library".
Play Control		Resumes playback from pause.
		Stops playback.
		Stops playback temporarily.
		Skips forward/backward.
Browse		Moves to the browse screen.
Screen Off		Closes the screen display and shows the background. Press one of the menu operation keys to redisplay it.



- You can also use the external device operation keys (▶, ■, ■■, ◀, ▶▶) on the remote control to control playback.
- Some playback controls are not available during Rhapsody radio channel playback.

■ Shuffle/repeat settings

You can configure the shuffle/repeat settings for playback of Rhapsody contents.



- The shuffle/repeat settings are shared by USB and network sources.

1 When "Rhapsody" is selected as the input source, press **OPTION**.

2 See "Playing back music stored on PCs" in "Owner's Manual" to configure the settings.

■ Switching information on the front display

1 Press **INFO**.

Each time you press the key, the display item switches.

Display items

Song (song title), Artist (artist name), Album (album name), DSP Program (sound mode name), Audio Decoder (decoder name)

Removing the Rhapsody account

Follow the procedure below to remove your Rhapsody account from this unit.

- 1** Press **ON SCREEN**.
- 2** Use the cursor keys to select "Input" and press **ENTER**.
- 3** Use the cursor keys (◀/▶) to select "Rhapsody" and press the cursor key (Δ).
- 4** Use the cursor keys (Δ/▽) to select "Remove Account" and press **ENTER**.
- 5** Use the cursor keys to select "OK" and press **ENTER**.
Your Rhapsody account is removed from this unit.
- 6** To exit from the menu, press **ON SCREEN**.

■ Checking the registration status of the Rhapsody account

To check the registration status of your Rhapsody account, follow "Removing the Rhapsody account" and select "Account Status" in step 4.



Rhapsody and the Rhapsody logo are registered trademarks of RealNetworks, Inc.