



BODiBEAT Station

Owner's Manual

Version 1.3.c

Contents

About the BODiBEAT Station	2
Viewing the Exercise Logs.....	5
Creating and Managing a Training Program	9
Managing Song Data	11
Preference Settings	17
Printing the Library.....	20
Transfer the Library to Another Computer.....	21
Checking for Updates of the BODiBEAT and/or BODiBEAT Station	23
Menu List.....	24

IMPORTANT

Before installing the software, please read carefully the End User License Agreement (EULA) included in the CD-ROM. If after installing the software you want to read the License Agreement, you can access it anytime from the [Help] menu of the BODiBEAT Station.

SPECIAL NOTICES

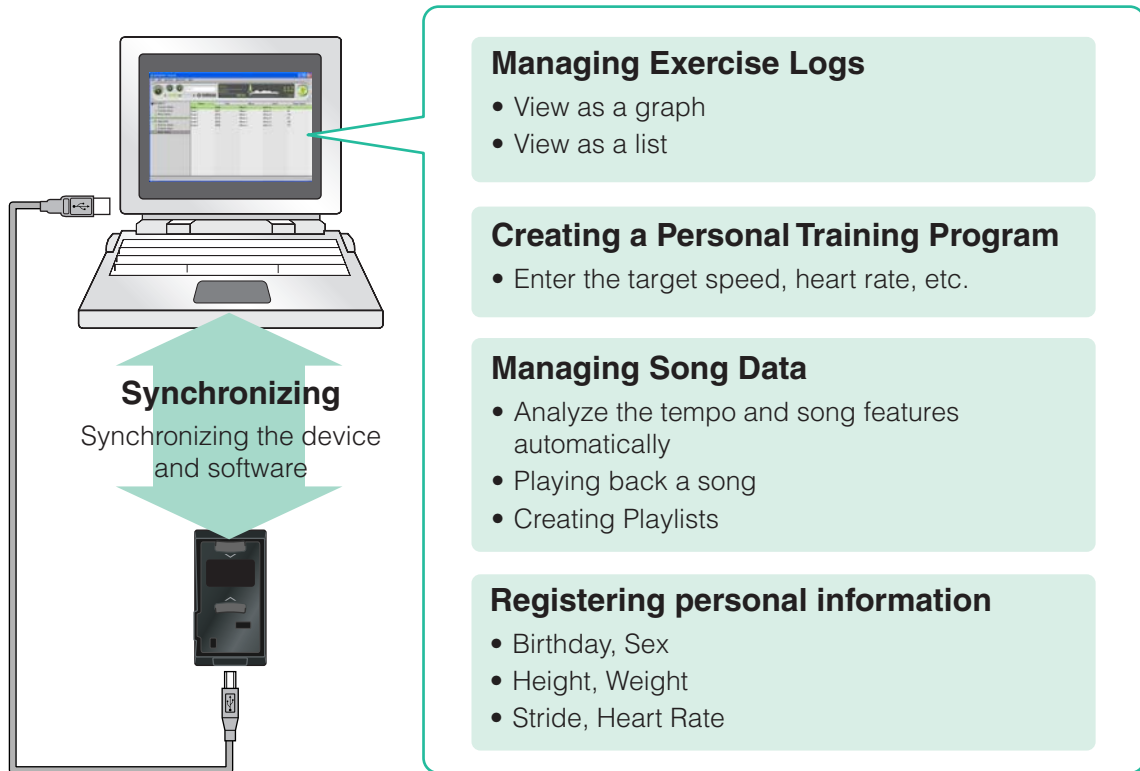
- Copying of the commercially available musical data including but not limited to MIDI data and/or audio data is strictly prohibited except for your personal use.
- The software and this owner's manual are the exclusive copyrights of Yamaha Corporation.
- Copying of the software or reproduction of this manual in whole or in part by any means is expressly forbidden without the written consent of the manufacturer.
- Yamaha makes no representations or warranties with regard to the use of the software and documentation and cannot be held responsible for the results of the use of this manual and the software.
- The screen displays as illustrated in this owner's manual are for instructional purposes, and may appear somewhat different from the screens which appear on your computer.
- Windows is a registered trademark of Microsoft® Corporation in the United States and other countries.
- The company names and product names in this Owner's Manual are the trademarks or registered trademarks of their respective companies.

© 2008-2009 Yamaha Corporation. All rights reserved.



About the BODiBEAT Station

Features



The BODiBEAT Station provides exceptionally convenient and easy tools for managing the songs you want to use on the BODiBEAT device, and provides easy-to-understand visual graphs of your exercise logs. It also provides convenient means for creating playlists of your favorite songs and for loading them to the device, so that you can enjoy walking or jogging while listening to your favorite music. In addition, creating training programs and registering your personal data by using the software is much easier and faster than doing it on the device itself.



System Requirements

OS	Windows® XP Service Pack 2 or later, 32-bit editions of Windows® Vista, or Windows® 7
Computer	1 GHz or higher; Intel® Pentium®/Celeron® processor
Available Memory	Windows XP: 128 MB or more (256 MB or more is recommended) Windows Vista/7: 512 MB or more (1 GB or more is recommended)
Hard Disk	200 MB or more free space
Display	1024 x 768 or more
Sound	Windows-compliant Audio Interface or Sound Card (Windows Media® Player version 9 or higher must be installed to the computer.)

The system requirements above may differ slightly depending on the particular computer.

Installation and Uninstallation

Installation procedure

1 Insert the supplied CD-ROM into your computer's CD/DVD drive.

The initial menu appears on the screen.

NOTE

If the initial menu does not appear, select the CD/DVD drive from My Computer, then double-click "Setup.exe" and go on to step 3.

2 Click "Install BODiBEAT Station" from the initial menu.

3 Execute the installation by following the onscreen instructions.

Recovery procedure

If some files required by this software are lost or do not exist because of installation failure, you can use the following procedure to recover them.

NOTE

The actual names of the menu items and buttons will depend on the OS version you are using.

1 Select [Control Panel] from the [start] menu, then double-click "Add or Remove Programs" (for Windows XP), "Programs and Features" or "Uninstall a program" (for Windows Vista/7).

2 Select "BODiBEAT Station" among the installed programs, then click [Repair] or [Change].

A confirmation dialog appears. Follow the onscreen instructions to recover the software.



Uninstallation procedure

If for some reason you no longer need this software and want to uninstall it, follow these instructions:

NOTE

The actual names of the menu items and buttons will depend on the OS version you are using.

1 Select [Control Panel] from the [start] menu, then double-click “Add or Remove Programs” (for Windows XP), “Programs and Features” or “Uninstall a program” (for Windows Vista/7).

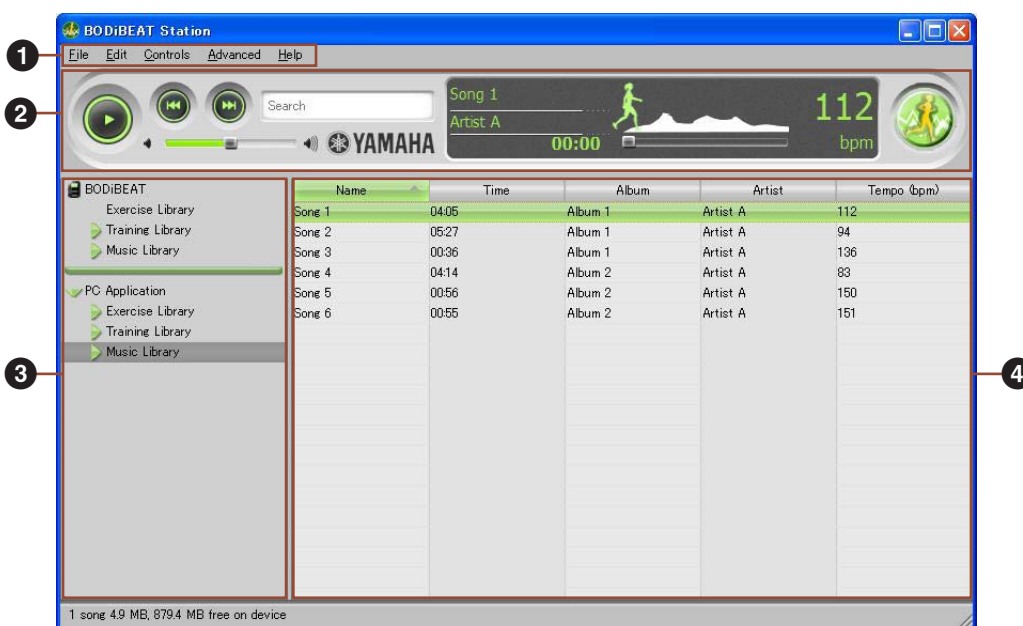
2 Select “BODiBEAT Station” among the installed programs, then click [Remove] (for Windows XP) or [Uninstall] (for Windows Vista/7).

The confirmation dialog appears. Follow the onscreen instructions to remove the software.

NOTE

If you want to uninstall the software temporarily in order to update the software, click “No” at the “Uninstall user data?” message. Doing this preserves your custom preference settings and Library contents, which will be restored after the software is re-installed.

Application Menus and Functions



1 Menu Bar

Executes various commands ([page 24](#)).

2 Play Controls

Controls song playback as well as data searches in the Libraries ([page 11](#)).

3 Library List

Shows libraries in a list format: Exercise Library, Training Library and Music Library.

4 Library View

Displays selected item(s) using list or graph views.





Viewing the Exercise Logs

By connecting the BODiBEAT device to the computer, you can import recorded logs of your exercise sessions into the software. The imported exercise logs can be shown in graph or list form.

Graph View

If you select a blue and purple graph icon under the Exercise Library, you can quickly see the latest log in a standard graph format. You can also create a new graph view by following the procedure below. The log graph is automatically saved under the Exercise Library when the dialog closes.

1 Click “Exercise Library” in the Library List, then select the desired exercise log in the Library View.

2 From the [File] menu, select [New Log View] → [Graph View...].

The Graph Properties dialog opens.

HINT

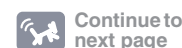
You can also call up the Graph Properties dialog by selecting [New Log View] → [Graph View...] from the right-click menu on one of the graph icons under the Exercise Library.

3 In the dialog, specify the display format in which graph is shown.

Range	Specify the unit for the x-axis (horizontal) of the graph. Workout, week or month can be selected.
Y Axis	Specify the unit for the y-axis (vertical) of the graph. Distance, time, pace (min/mile), speed (mile/h), calories or HR (heart rate) can be selected. (“Distance” and “calories” cannot be selected when you select “Workout” in the Range parameter.)
Show training program graph	When you want to view the exercise log of training mode, checking here enables you to view the graph of the training program together with the exercise log graph. This setting is available only when you select “Workout” in the Range parameter.
Compare My best speed	Checking here enables you to compare your best time and the currently selected exercise log. Your best time is automatically calculated from all exercise logs and displayed together with the current exercise log graph. This setting is available only when you select “Workout” in the Range parameter and “Pace” or “Speed” in the Y Axis parameter.
Always display the latest log data	Checking here enables the latest log data to be opened when you select a graph in the Library List after the BODiBEAT Station is started.

NOTE

The unit of Distance, Pace and Speed depends on the setting in the System tab of the Preference settings (page 19).





4 Click [OK].

The dialog will close and the exercise log graph will displayed in the Library View. The graph color differs depends on the selected y-axis item.

Distance	Green
Time	Yellow
Pace, Speed	Purple
Calorie	Orange
Heart Rate	Light Blue

Operations on the graph

- Clicking “PREV” or “NEXT” at the top of the graph calls up the graph of the previous/next log(s).
- Hovering the mouse over data points on the graph will show the values for each point using pop-up tool tips.

Changing the display format

You can call up and edit the Graph Properties dialog by selecting [Properties...] from the [File] menu or from the right-click menu on the desired exercise log in the Library List. The items for the y-axis can also be selected from the list on upper right of the graph.

HINT

The graph can be printed ([page 20](#)).



List View

If you select a blue list icon under the Exercise Library, you can quickly see the latest log in a list format. You can also create a new list view in another format by following the procedure below. The log list is automatically saved under the Exercise Library when the dialog closes.

1 Click “Exercise Library” in the Library List, then select the desired exercise log in the Library View.

2 From the [File] menu, select [New Log View] → [List View...].

The List Properties dialog opens.

HINT

You can also call up the List Properties dialog by selecting [New Log View] → [List View...] from the right-click menu on one of the list icons under the Exercise Library.

3 In the dialog, specify the display format for the list.

Specify the display unit in the Range parameter. Workout, week or month can be selected.

Checkmark the desired items which you want to display on the list.

If you check “Always display the latest log data,” the latest log data will open when you select a graph/list in the Library List after the BODiBEAT Station is started.

4 Click [OK].

The dialog will close and the exercise log list will displayed in the Library View.

Operations on the list

- Clicking “PREV” or “NEXT” at the top of the list calls up the list of the previous/next log(s).
- To change the order of columns, simply drag the column to the desired location.
- When many columns are displayed, you can scroll through the list by dragging the slider at the bottom of the list.

Changing the display format

You can call up and edit the List Properties dialog by selecting [Properties...] from the [File] menu or from the right-click menu on the desired exercise log in the Library List.

HINT

The list can be printed ([page 20](#)).



Deleting Exercise Logs

You can delete exercise logs from the BODiBEAT device and BODiBEAT Station.



CAUTION

Please note that deleted logs cannot be restored.

- 1 Click “Exercise Library” in the Library List, then select the logs you want to delete in the Library View.**
- 2 Select [Delete] from the [Edit] menu or from right-click menu.**
- 3 Connect the BODiBEAT device to the computer.**

Synchronization between the device and computer is done and the logs selected in step 2 are deleted from the Data menu of the BODiBEAT device.

NOTE

If the BODiBEAT device has already been connected, select [Sync...] from the [File] menu to synchronize.





Creating and Managing a Training Program

This software allows you to easily create training programs for use with the BODiBEAT device, letting you enter desired intervals and targets from your computer keyboard, and then view a graphical representation of the training program.

Creating a new training program

1 Click “Training Library” in the Library List.

2 Select [New Training Program] from the [File] menu.

“New Training Program” is added under the Training Library and a blank program is opened in the Library View.

3 Select the programming items from the pull-down menu in the Library View.

Interval	Set the scale of training length: time or distance. If you change this setting in the middle of programming, the entered date will be cleared (confirmation message will appear).
Target	Select the training intensity from Pace, Tempo, HR (Heart Rate) or %HRR.

NOTE

%HRR is represented as $(HR - \text{Resting HR}) / (\text{MaxHR} - \text{Resting HR})$.

4 Enter the value in each cell.

Click the desired cell and enter the value. The units for the values are:

Interval	Time	minutes: seconds (at 1-second intervals)
	Distance	mile (at 0.1-mile intervals) or km (at 0.1-km intervals)
Target	Pace	minutes: seconds (per mile or km)
	Tempo	bpm
	HR	bpm
	%HRR	%

NOTE

The unit of Distance and Pace depends on the setting in the System tab of the Preference settings (page 19).

When you enter the target intensity, the reference value will be automatically calculated and displayed. For example, when you enter the %HRR value, the corresponding HR value is displayed next to the %HRR value. When you enter the tempo, the corresponding pace value is displayed next to the tempo value.



As you enter the value, the corresponding graph will be displayed beneath the list, allowing you to confirm the training program visually.

At the top right of the Library View, the total time (or total distance) is automatically calculated and displayed as you enter the time/distance.

The created training program is automatically saved under the Training Library.

Operations on the list/graph

- Hovering the mouse over data points on the graph will show the values for each point using pop-up tool tips.
- Right clicking on a cell of the list opens the pop-up menu to edit (copy, paste, delete, etc.)

HINT

The training program can be printed ([page 20](#)).

Loading and Editing Training Programs on the BODiBEAT device

1 Connect the BODiBEAT device to the computer.

The device and computer are synchronized and any training programs on the device are loaded to the computer.

NOTE

If the BODiBEAT device has already been connected, select [Sync...] from the [File] menu to synchronize. Or you can also transfer a specific training program by dragging the desired one in the Library List, from the BODiBEAT device to the Training Library.

NOTE

For details about synchronization, refer to [page 18](#).

CAUTION

Never disconnect the USB cable while data is being transferred. Doing so may cause loss of data or damage to the device.

2 Click “Training Library” in the Library List, then select the desired training program under the training library for editing.

The selected training program is shown in the Library View.

3 Edit the training program (see steps 3 and 4 on [page 9](#)).

4 After editing, transfer the edited training program to the device by selecting [Sync...] from the [File] menu.

You can also transfer a specific training program by dragging the desired one in the Library List, from the Training Library to the BODiBEAT device.

NOTE

Up to 99 programs can be displayed on the BODiBEAT device. (This limit applies even if 100 or more programs have been transferred to the device.)





Managing Song Data

Available File Format

This software can use song files of the following file formats.
MP3, WMA, AAC, WAV

NOTE

Some file formats above may not be supported depending on the particular files.

NOTE

AAC and WMA content which uses DRM (Digital Rights Management) is not supported.

Importing and Playing Back Song Data

You can import songs on the hard disk to the software, then play them back.

NOTE

The BODiBEAT Station cannot directly import the song data from a music CD. You will need to import songs from the CD to your computer in advance, using a CD ripping software, such as Windows Media Player.

1 Open the folder which contains the desired song(s), then drag the song(s) into the BODiBEAT Station window.

Analysis of the data (tempo, genre, etc.) starts automatically. After analyzing, the selected song(s) is added to the Music Library. Song information (song name, artist name, album title, song tempo, etc.) are shown on the Library View.

HINT

If you want to import all songs in a folder, drag the folder containing the songs. All the songs in the folder are imported at the same time.

HINT

Instead of dragging, you can also import song(s) by selecting [Add files to Library...] or [Add folders to Library...] from the [File] menu.

NOTE

Importing data will take a long time (up to one-quarter of the song length) since the song's tempo characteristics are thoroughly checked and analyzed automatically in real time. The analysis time may differ depending on your particular computer.

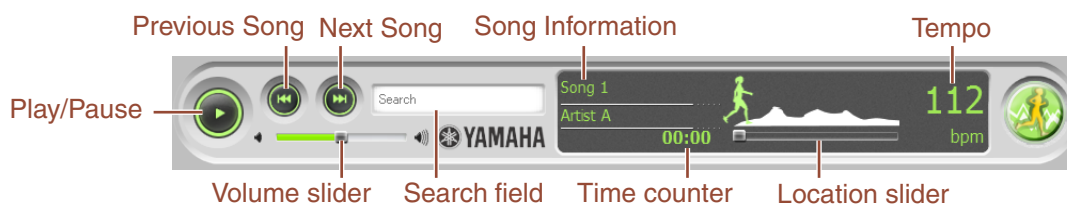


Continue to
next page



2 Playback the desired song with the Play Controls.

The Play Controls area contains controls related to song playback.



Play/Pause	When song playback is stopped, clicking this starts the song. Clicking this when the song is playing pauses playback.
Previous Song	Click this to go to top of the song. When song playback is stopped, clicking this goes to the previous song. Clicking and holding this will rewind the song.
Next Song	Click this to go to next song. Clicking and holding this will fast forward the song.
Volume slider	Drag this to adjust the playback volume.
Search field	Use this when you want to search for a specific song or training program (page 12).
Song Information	Shows song name and artist name.
Time counter	Shows elapsed time.
Location slider	Drag this to fast forward/rewind the song.
Tempo	Shows the tempo of the currently selected song.

NOTE

You can also control playback from the [Controls] menu (page 25).

NOTE

Depending on the song characteristics, the song tempo which is automatically detected by the BODiBEAT Station may differ from the actual tempo. If the detected tempo is not appropriate, you can manually correct it from the Properties dialog (page 15).

Searching for Songs by Keyword

In the Music Library, songs are sorted in several ways: by artist name, album title, tempo, genre, etc., allowing you to choose the desired song in the most convenient way.

In addition, you can search for a desired song by entering a keyword as follows.

1 Type the keyword in the Search field on the Play Controls.

As you type, songs that contain the entered keyword are displayed on the Library View.

Creating a Playlist

A Playlist is a compilation of songs. This software handles Playlists in two different ways, according to their type: Standard Playlist and Smart Playlist. A Standard Playlist can be created by choosing (collecting) songs as you want. This allows you to create original compilations, effectively making your own “albums.”



A Smart Playlist is created automatically based on rules you set up. For example, you can specify conditions such as “Year is between 2005-2007” and “Tempo is greater than 140 bpm.” The songs that match both conditions are automatically selected from the Music Library and are grouped together to create a Smart Playlist. As you add/delete song(s) in the Music Library, Smart Playlists will automatically be updated.

HINT

The Music Library features two convenient preset Smart Playlists: Walk and Jog. Songs in the Music Library are automatically assigned to the Walk or Jog Playlist depending on their tempo. By default, songs of a tempo of 115 – 145 bpm are assigned to the Walk Playlist and those of 145 – 200 bpm are assigned to the Jog Playlist. As you exercise, the tempo for these playlists is updated according to the Learning Function of the device.

Creating a Standard Playlist

1 Click “Music Library” from the Library List.

2 Select [New Playlist] from the [File] menu.

As a new Playlist is added on the Library List, enter the desired Playlist name.

3 Click “Music Library” from the Library List again.

All the songs are shown in the Library View.

4 Choose the song(s) you want to add to the Playlist from the Library View, then drag them into the Playlist created in step 2 above.

The song(s) are added to the Playlist.

When you want to delete song(s) from the Playlist, click the desired song in the Playlist and select [Delete] from the [Edit] menu.

HINT

You can also delete a song by right-clicking on it and selecting [Delete] from the pop-up menu.

Creating a Smart Playlist

1 Click “Music Library” from the Library List.

2 Select [New Smart Playlist] from the [File] menu.

The Smart Playlist dialog appears.

3 Set the desired conditions for the Smart Playlist from the dialog.

To add a condition, click [+]. To delete a condition, click [-].

4 Click [OK].

A new Smart Playlist is created and listed on the Library List. If necessary you can change the name.

HINT

You can edit the conditions of the Smart Playlist at any time by selecting [Properties...] from the [File] menu or from the right-click menu on the desired Smart Playlist.



Transferring Song Data/Playlist to the Device

This operation lets you transfer song data and Playlists in the Music Library to the BODiBEAT device. The songs transferred to the device can be listened to when you exercise, or played back in the Music mode.

1 Connect the BODiBEAT device to the computer.

Synchronization between the device and computer is done and song data on the computer is transferred to the device.

NOTE

If the BODiBEAT device has already been connected, select [Sync...] from the [File] menu to synchronize. You can also transfer data of specific songs by dragging the desired one in the PC application Music Library to the BODiBEAT "Music Library" in the Library List.

NOTE

For details about synchronization, refer to [page 18](#).

NOTE

When the BODiBEAT device does not have enough free space, a dialog will appear prompting you to continue transferring. If you check "Randomly select songs to be transferred," the different songs will be transferred to the BODiBEAT device each time.


CAUTION

Never disconnect the USB cable while data is being transferred. Doing so may cause loss of data or damage to the device.

Removing the BODiBEAT device from the computer

After transferring song data, you can remove the device from the computer safely with the following procedure.

NOTE

If you are using Windows 7, refer to the attached file for the procedure. 

1 Double-click "Safely Remove Hardware" icon on the Windows task bar.

The Safely Remove Hardware dialog appears.

2 Confirm that the "Display device component" is checkmarked, select "Yamaha BODiBEAT USB Device," then click [Stop].

The "Stop a Hardware device" dialog appears.

3 Click [OK].

4 Disconnect the USB cable from the computer.



Editing the Song Information

The information for each song is displayed on the Library View. You can edit the desired item by selecting [Properties...] from the [File] menu.

NOTE

Changes made here for the BODiBEAT Station are valid only on this software and the BODiBEAT device itself.

NOTE

If the song file which has been imported to the BODiBEAT Station is removed from the original location, the song is shown in red on the Library View and you cannot play/edit it.

Editing the Song Tempo

If the tempo (detected automatically when the song is imported) is not appropriate, you can re-analyze the tempo by the following operation.

- 1 Select the desired song to edit from the Library View.**
- 2 Select [Properties...] from the [File] menu.**

The Properties dialog opens and the information of the song is shown.
- 3 Click the [Edit Tempo...] button.**

The Edit Tempo dialog opens.
- 4 Click the [Start] button.**

Song playback begins.
- 5 Click the [Tap here] button four times or more in time with the rhythm of the song.**

The song tempo detected based on your clicks is shown in the “New Tempo Estimate” field on the dialog.
- 6 Click [OK] to close the Edit Tempo dialog. Then click [OK] again in the Properties dialog.**

The dialog closes and the song is re-analyzed. After analyzing, the detected tempo is shown on the Library View.

NOTE

If you directly edit the “bpm” value in the Audio Item Properties dialog, the tempo value shown in the Library View will be changed, but tempo analysis will not be performed.



Viewing a Tempo Map

This shows the tempo distribution for all songs in Music Library.

1 Select [Music Tempo Map...] from the [Advanced] menu.

The Tempo Statistics dialog opens and the tempo graph is shown.

Moving the cursor over the bars on the graph shows the corresponding tempo range and song file number, allowing you to see how many songs exist for a specified tempo range in the Music Library.

2 Click [OK] to close the dialog.

FYI What is your normal exercise tempo?

Your exercise tempo can be checked in the Exercise Library. View your exercise logs by list ([page 7](#)) and check the “Tempo” row. (If the “Tempo” row is not shown, check “Tempo” in the List Properties dialog.)

Once you know roughly what your exercise tempo is, you can search for songs that fall within this tempo. It is also a good idea to create a playlist which contains songs of the same tempo ([page 12](#)). By transferring those songs to the BODiBEAT device manually, you can have a wide variety of your favorite songs for listening to as you exercise.





Preference Settings

In the Preferences menu, you can enter user information, overall display-related settings and synchronization with the device.

User information settings

1 From the [Edit] menu, select [Preferences...].

The Preferences dialog appears. In the Personal Information tab, you can enter the following items.

User Name	Enter your name.
Birthday	Enter your birthday. Select from the pull-down menu or enter the date directly.
Sex	Select Male or Female from the pull-down menu.
Height	Enter your height. The unit (feet or meters) used here depends on the setting in the System tab.
Weight	Enter your weight. The unit (pounds or kg) used here depends on the setting in the System tab.

Clicking the [Details...] button calls up the following two items for editing.

Stride	Enter your stride for both walking and jogging. Clicking the [Standard] button automatically enters the normal value calculated from your height (height x 0.5 for walking stride; height x 0.8 for jogging stride).
Heart Rate	Enter your maximum heart rate and resting heart rate. Clicking the [Standard] button automatically enters the normal value calculated from your age (the maximum heart rate is calculated by $220 - \text{age}$; the resting heart rate is 60).
Walk/Jog Tempo (For Fitness mode)	Enter your comfort tempo (starting tempo and maximum tempo) in Walk Fitness and Jog Fitness modes. Clicking the [Standard] button automatically enters the default value: 115-145 for Walk and 145-200 for Jog.

NOTE

The Walk/Jog Tempo settings affect the tempo of the Walk/Jog playlists ([page 13](#)).

NOTE

The Walk/Jog Tempo value may automatically be changed affected by the Learning Function of the BODiBEAT device. For details about Learning Function, refer to the Owner's Manual of the BODiBEAT device.

2 Click [OK] to close the dialog.

NOTE

When connecting the BODiBEAT device to a computer, personal information is automatically synchronized between the two. For details about synchronization, refer to [page 18](#).



Synchronize setting with the device

When you connect the BODiBEAT device to the computer or select the [Sync...] menu from the [File] menu, synchronization between the device and computer is completed. This makes sure that the data on both the device and computer are of the latest status (older data is overwritten by updated).

If you made some changes on both the device and computer after the last synchronization, the settings here will be recognized as the most recent and become effective.

NOTE

When you connect the BODiBEAT device to the computer or select [Sync...] from the [File] menu, a prompt dialog appears. If you click "No" at the prompt, the Training Library and Music Library will not be synchronized. However, the Exercise Library, personal information and display-related settings will automatically be synchronized regardless of this prompt.

1 From the [Edit] menu, select [Preferences...].

The Preferences dialog appears.

2 Clicking the Sync tab shows the following item.

If there is a conflict:

This allows you to select which has priority (the BODiBEAT device or BODiBEAT Station) when the training programs, personal information or display-related settings on the BODiBEAT device and on the BODiBEAT Station conflict. If only the BODiBEAT device or BODiBEAT Station have been changed since being synchronized previously, the changed data from either, is adopted regardless of this conflict setting. However, if both of them have been changed, the conflict becomes effective.

3 Click [OK] to close the dialog.



Display-related settings

1 From the [Edit] menu, select [Preferences...].

The Preferences dialog appears.

2 Clicking the System tab shows the following items.

Language	Select the language displayed in the menu bar and all dialogs. English, German, French, Spanish or Japanese can be selected. The selected language will be applied after the software is restarted. (If the appropriate font is not installed to the computer, the selected language may not be displayed properly.)
Date Format	Select the date display method from “yyyy/mm/dd” (Year/Month/Day), “dd/mm/yyyy” (Day/Month/Year) or “mm/dd/yyyy” (Month/Day/Year).
Time Format	Select the time display format from 12 Hour or 24 Hour.
Length Units	Select the measurement unit from Metric or U.S. (Miles/Feet).
Weight Units	Select the measurement unit from Kg or Pound.

3 Click [OK] to close the dialog.

NOTE

When connecting the BODiBEAT device to a computer, the display-related settings are synchronized automatically between the two. For details about synchronization, refer to [page 18](#).





Printing the Library

If you have a printer connected to the computer, you can print the Library contents.

By printing out the playlist program or training program, you can easily refer to the specific items and data contained in playlist/training program you've selected on the device. Also, printing the exercise logs and keeping a paper file of them gives you a convenient record of your exercise progress.

1 Select the desired item to print from the Library List.

2 Select [Print...] from the [File] menu.

The Print Preview dialog appears.

3 (When printing the Music Library) select the desired item to print from the pull-down menu.

Songs	Print the song title, length, album name and artist name.
Custom	Print the items shown in the Library View.

4 (If necessary) click [Page Setup...] to change the settings for paper feeding, color, etc.

For details on these settings, refer to the manual of your printer.

5 Click [OK].

Printing will start.





Transfer the Library to Another Computer

If you have two or more computers, or if you get a new computer, you can save the library as a file and use it on the other computer.

CAUTION

When you connect the BODiBEAT device to a new computer and associate with it, the data on the BODiBEAT device will be lost. Before connecting the BODiBEAT device with a new computer, make sure you have connected your BODiBEAT device with the current computer and imported its data to the BODiBEAT Station.

Saving all libraries in one file

1 Select [Export Library...] from the [File] menu.

The file save dialog appears. Specify the destination to save and enter the file name.

2 Click [Save].

All libraries in the software are saved as a file.

NOTE

The song files are not included in the exported file.

NOTE

The saved file is encrypted so that an error message may be appear when you try to open the file. This is normal and you can import this encrypted file to the BODiBEAT Station.

Saving a specific library as a file

NOTE

If you want to save the Exercise Library in order to import to another computer, follow the instructions in "Saving all libraries in one file" above. The steps below let you save the Exercise Library just as an image file of the log graph or as a text file of the log list. They cannot be imported to the BODiBEAT Station.

1 Select the desired item in the Library List.

As for the Exercise Library or Training Library, the entire Library cannot be selected. Select the desired item within the Library.

2 Select [Export...] from the [File] menu.

The file save dialog appears. Specify the destination to save and enter the file name. If necessary, select the file type.

3 Click [Save].

The library is saved as a file.



Using the saved file on the other computer

- 1 Copy the saved file to a storage device such as USB flash memory, then move it to the other computer.**
- 2 Launch the BODiBEAT Station software on the destination computer, then drag the file into the BODiBEAT Station window.**

The library will be loaded and shown in the Library List.

NOTE

You can also import the saved file by selecting [Import Library...] from the [File] menu.

NOTE

If you transfer the Music Library to another computer, songs will not be played back even though the song list is shown in the Library View. This is because the original song file does not exist in the destination computer.





Checking for Updates of the BODiBEAT and/or BODiBEAT Station

You can check for updates of the BODiBEAT device or the BODiBEAT Station software on the website.

Checking for updates of the device

1 Select [BODiBEAT Update Web Link] from the [Help] menu.

This automatically opens the website containing BODiBEAT device update information. For up-to-date information or specific updating instructions, refer to the website.

Checking for updates of the software

1 Select [Application Update Web Link] from the [Help] menu.

This automatically opens the website containing BODiBEAT Station update information. For up-to-date information or specific updating instructions, refer to the website.





Menu List

[File] menu

New Playlist	Creates a new Playlist (page 12). This menu is displayed only when you select Music Library in the Library List.
New Training Program	Creates a new Training program (page 9). This menu is displayed only when you select Training Library in the Library List.
New Log View	Creates a new Exercise Log view. Select graph view or list view in the sub-menu (page 5). This menu is displayed only when you select Exercise Library in the Library List.
New Smart Playlist...	Creates a new Smart Playlist. The Smart Playlist dialog will open (page 13).
New Folder	Creates a new folder in the Music Library.
Add files to Library...	Imports a song file. Select desired file from the file select dialog (page 11).
Add folders to Library...	Imports song files in a folder. All song files in the folder can be imported (page 11).
Import Library...	Imports a Music Library or Training Library (page 22).
Export...	Exports currently selected Library as a file (page 21).
Export Library...	Exports all libraries in one file (page 21).
Properties...	Shows the information of currently selected item.
Show Containing Folder	Shows the folder in which the selected song file is located.
Sync...	Transfers data between the computer and the device.
Page Setup...	Sets the printing options (page 20).
Print...	Prints the selected Library (page 20).
Exit	Quits the application.

[Edit] menu

Undo	Undoes previous operation.
Cut	Cuts the selected item from the screen and copies it to the clipboard.
Copy	Copies the selected item to the clipboard.
Paste	Copies the item in the clipboard to the selected location.
Delete	Deletes the selected item.
Insert	Inserts a new line into the training program.
Rename	Renames the selected item.
Select All	Selects all items.
Select None	Cancel the selection.
Show Duplicate Songs	Shows any duplicate songs in the music library.
View Options...	Selects the items to display for the Music Library or Exercise Log.
Preferences...	Sets your personal information and display-related settings (page 17).



[Controls] menu

Play/Pause	Plays/pauses the selected song.
Previous Song	Selects the previous song.
Next Song	Selects the next song.
Mute	Mutes the audio playback.
Repeat	Switches repeat playback on or off.
Shuffle	Switches shuffle playback on or off.

[Advanced] menu

Music Tempo Map...	Shows the tempo map of all songs in the Music Library (page 16).
--------------------	--

[Help] menu

About	Shows the version information of the BODiBEAT Station.
Help	Opens the help file (this owner's manual).
BODiBEAT Website	Connects to the BODiBEAT website.
Application Update Web Link	Connects to the website at which the application updater can be downloaded.
BODiBEAT Update Web Link	Connects to the website at which the BODiBEAT device updater can be downloaded.
EULA	Shows the End User License Agreement.

