



RAV-2000

*Intelligent Touch Panel
Remote Control*

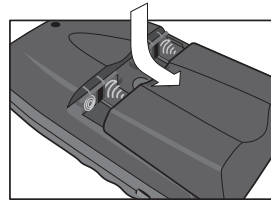


Quick-Start Guide

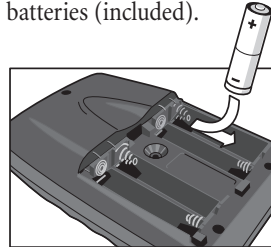
YAMAHA RAV-2000 Quick-Start Guide

INSTALLING THE BATTERIES

1. Locate the battery door on the RAV-2000's back and slide it off.



2. Use the indicators to match and insert the four (4) AA batteries (included).



3. Slide the battery door back on.

After a short time, the RAV-2000 will start up automatically and beep twice to indicate it is ready to use.

NOTE: To adjust the contrast, use the Contrast Dial on the left side of the unit.

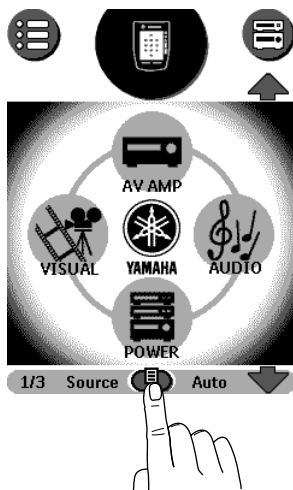
PROGRAMMING THE RAV-2000

The following instructions list the basic steps for programming sources into the Yamaha RAV-2000 Touch Panel Remote Control. For additional details, see the *RAV-2000 Owner's Manual*.

1. To activate the display, touch the screen anywhere.

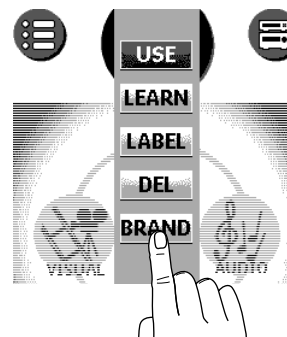
NOTE: To conserve battery life, the display will turn off if the RAV-2000 is idle for a few seconds. To adjust how long the touch screen stays on, see page 9 of the RAV-2000 Owner's Manual.

2. Touch the small icon at the center bottom of the display.

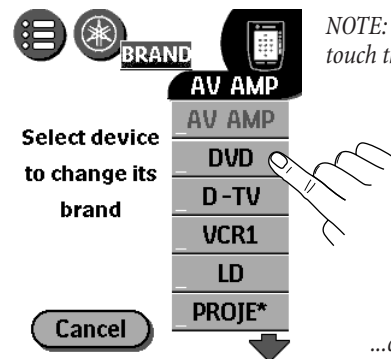


3

3. On the next screen, touch the **BRAND** button.



4. From the list, touch the source (e.g., **DVD**) you wish to program. If it is not shown, touch the **Down Arrow** to see more sources.

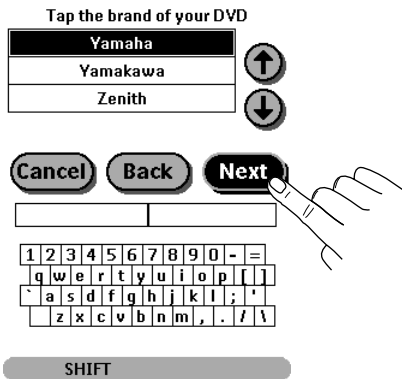


...continued on next page

4

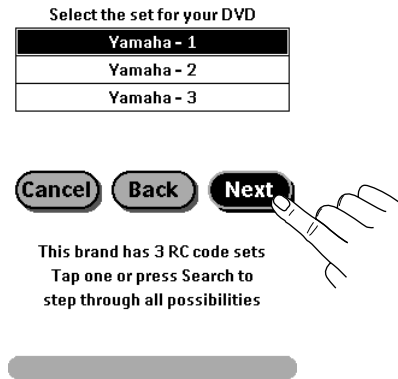
PROGRAMMING THE RAV-2000 (CONTINUED)

- On the next screen, follow the displayed instructions and then touch the **NEXT** button.
- Using the scroll arrows, locate and touch the brand (e.g., **Yamaha**) for your selected source (e.g., **DVD** player). Then touch the **NEXT** button.



- If the brand you've selected has multiple codes, the next screen will display a list of RC (remote control) code sets. Touch a code set (e.g., **Yamaha-1**) and then touch the **NEXT** button.

NOTE: As an alternative, you can use the RAV-2000 to search for multiple RC codes. Please refer to the RAV-2000 Owner's Manual, pages 7 and 8, for details.



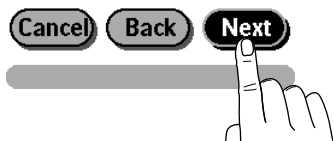
...continued on next page

PROGRAMMING THE RAV-2000 (CONTINUED)

8. On the next screen, follow the displayed instructions and then touch the **NEXT** button. Then power on the source you are programming (e.g., DVD player).



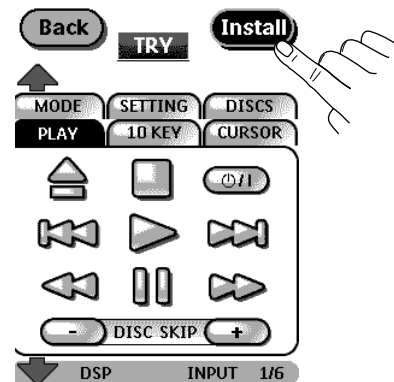
In the next step you can try out your DVD for Yamaha - 1. If your DVD functions properly, press **Install**, otherwise press **Back**.



9. On the next screen, try touching a function button (e.g., Play) to verify the source is controllable.

If the source responds, touch the **INSTALL** button (as shown on the next page). If it does not respond, touch the **BACK** button and then touch a different set of RC codes (e.g., **Yamaha-2**).

Repeat steps 8 and 9 as many times as needed until you find a set of codes that controls your selected source.



10. To program other sources, simply repeat steps 1 through 9.

For further explanation of the RAV-2000's remote control features, please refer to the complete owner's manual included with the unit. For customer service contact:

Yamaha Customer Service at
(800)-292-2982, ext. 6089;
Monday through Friday,
8 A.M. - 4 P.M., PST



©2001 Yamaha Electronics Corporation, USA
6660 Orangethorpe Avenue
Buena Park, CA 90620
<http://www.yamaha.com>