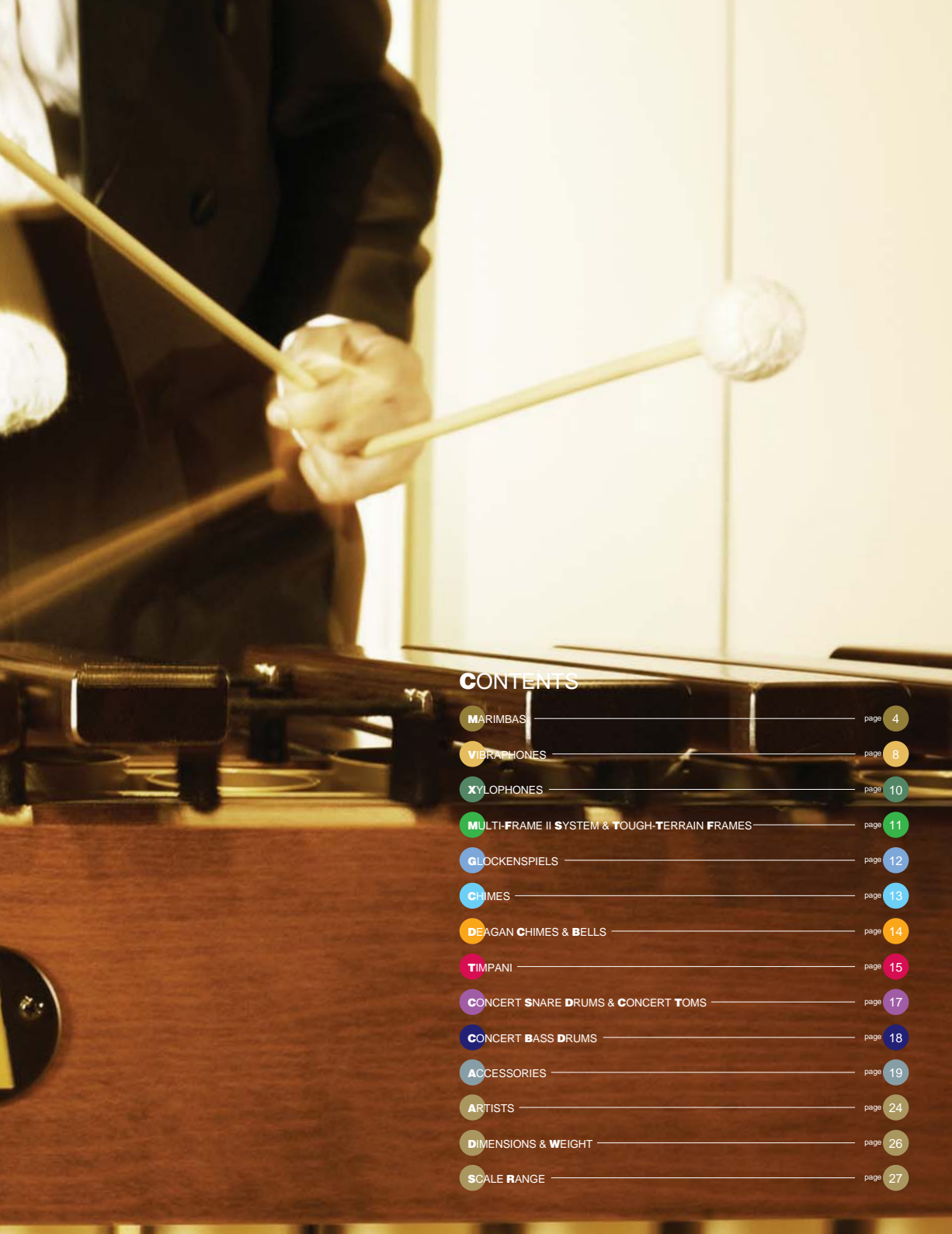


CONCERT PERCUSSION





 **YAMAHA**



CONTENTS

MARIMBAS	page	4
VIBRAPHONES	page	8
XYLOPHONES	page	10
MULTI-FRAME II SYSTEM & TOUGH-TERRAIN FRAMES	page	11
GLOCKENSPIELS	page	12
CHIMES	page	13
DEAGAN CHIMES & BELLS	page	14
TIMPANI	page	15
CONCERT SNARE DRUMS & CONCERT TOMS	page	17
CONCERT BASS DRUMS	page	18
ACCESSORIES	page	19
ARTISTS	page	24
DIMENSIONS & WEIGHT	page	26
SCALE RANGE	page	27

Marimbas

The YM 6000 Concert Grand Marimba is an exceptional instrument representing the ultimate in design, construction, and materials. It offers a full five-octave range of carefully aged Honduran rosewood bars, cut and tuned by hand, and features a beautifully crafted, sturdy frame. Also available is the YM 6000A model featuring our exclusive pneumatic height adjustment system.



YM 6000



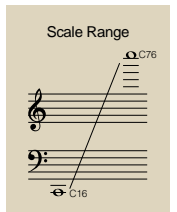
YM 6000A

YM 6000

Range: 5 octaves, C16–C76
Bars: Honduran rosewood
Bar sizes: 1 5/8"–3 1/8" Wide, 3/4"–1" Thick
Pitch: A=442Hz (other pitches available by special order)
Resonators: Round, adjustable from C16 to F33
Height: 35 1/2"

YM 6000A

YM 6000 with height adjustment
Height adjustment: Pneumatic strut system 33 7/8"–39 3/4"



The Concert Grand marimba is the result of more than 20 years of collaboration between the legendary marimbist Keiko Abe and Yamaha designers.



The resonators on the lower end of the YM 6000 and YM 6000A are adjustable, allowing a well-focused and balanced tone when changes in temperature and humidity occur.

Incorporating a streamlined frame and special resonator designs, our other rosewood models also maintain the exceptional sound quality for which Yamaha marimbas are known. These instruments incorporate all the lessons we have learned from the greatest players in perfecting our YM 6000 Concert Grand Marimba. Featuring the finest in traditional craftsmanship and the very latest in materials technology, all give you a rich, glowing tone and perfect intonation.

YM 5104A

Range: 5 1/2 octaves, C16–G83

Bars: Honduran rosewood

Bar sizes: 1 1/2"–2 7/8" Wide, 3/4"–1" Thick

Pitch: A=442Hz (other pitches available by special order)

Resonators: Helmholtz (C16 to F21).

Round cornered rectangle (F#22-A#26)

Height adjustment: Pneumatic strut system 33 7/8"–39 3/4"

Scale Range



YM 5100A

Range: 5 octaves, C16–C76

Bars: Honduran rosewood

Bar sizes: 1 5/8"–2 7/8" Wide, 3/4"–1" Thick

Pitch: A=442Hz (other pitches available by special order)

Resonators: Helmholtz (C16 to F21).

Round cornered rectangle (F#22-A#26)

Height adjustment: Pneumatic strut system 33 7/8"–39 3/4"

Scale Range



Yamaha has been developed the special way of the drying process with its long experience of mallet percussion making history.

Block shaped wood materials spend the longest natural drying process.*

After the first tuning process is done they are preserved in the humidity controlled space in a certain period.**

Then they are checked again and are processed with final tuning before tone color matching process to be a one tone bar set. All these process maintain the reputation of Yamaha tone bars that is the most hard to be out of tune.

* actually 2-3 years

** actually one month

YM 4900A

Range: 4 1/2 octaves, F21-C76

Bars: Honduran rosewood

Bar sizes: 1 5/8"-2 1/2" Wide, 3/4"-1" Thick

Pitch: A=442Hz (other pitches available by special order)

Resonators: Helmholtz (F21).

Round cornered rectangle (F#22-A#26)

Height adjustment: Pneumatic strut system 33 7/8"-39 3/4"

Scale Range



YM 4600A

Range: 4 1/3 octaves, A25-C76

Bars: Honduran rosewood

Bar sizes: 1 5/8"-2 1/2" Wide, 3/4"-1" Thick

Pitch: A=442Hz (other pitches available by special order)

Resonators: Round

Height adjustment: Pneumatic strut system 33 7/8"-39 3/4"

Scale Range



Easy Height Adjustment

Our exclusive height adjustment system uses pneumatic struts to allow height changes to be made easily by one person.

Unique Resonator Design

For a beautifully rich tone Yamaha marimbas employ a unique resonator design that includes special shapes, denser alloy, and thicker walls.



Portability

Transport, set-up and tear-down of the instruments are made simple by hinged resonators and rails, a two-piece crossbar and overall streamlined design. Four inch casters make rolling a breeze and locks on the playing side secure the instrument during play.

The YM 2400 marimba offers the excellent tone of our exclusive Acoustalon bars supported by a height-adjustable frame. Tested for years in the most rigorous performance situations, this instrument is built to remain stable, and to maintain its consistency of sound. A set of rosewood bars is available separately for added versatility (model YM-2400RBARS).

YM 2400

Range: 4 1/3 octaves, A25-C76

Bars: Acoustalon

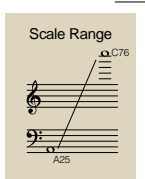
Bar sizes: 1 1/2"-2 1/4" Wide, 7/8" Thick

Pitch: A=442Hz (other pitches available by special order)

Height adjustment: 35"-38 1/4"

YM 2400RBARS

Optional rosewood bars for YM 2400



With tone bars made of select padauk wood for a natural wood sound and feel, the Standard and Junior marimbas offer an ideal balance between tone and price.

YM 1430

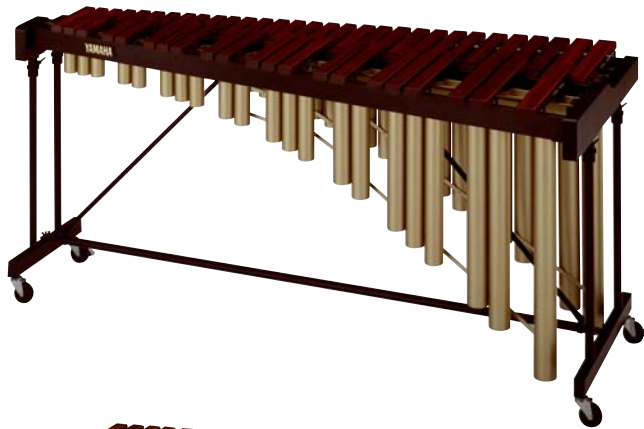
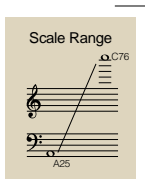
Range: 4 1/3 octaves, A25-C76

Bars: Padauk

Bar sizes: 1 1/2"-2 1/4" Wide, 7/8"-1" Thick

Pitch: A=442Hz (other pitches available by special order)

Height adjustment: 34 5/8"-38 5/8"



YM 40

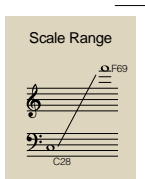
Range: 3 1/2 octaves, C28-F69

Bars: Padauk

Bar sizes: 1 1/2"-2 1/4" Wide, 7/8"-1" Thick

Pitch: A=442Hz

Height adjustment: 34 5/8"-38 5/8"



Vibraphones

Our vibes are world class instruments that reflect a beautiful sound supported by practical design. Made of an aluminum alloy unique to Yamaha, our vibe bars respond well at low dynamics yet do not distort at high levels. The special tuning of the bars, unique to our various models, ensures a pure fundamental and solid, full tone. By working with top pros, our design team creates instruments that not only sound wonderful, but offer exceptionally smooth mechanical operation for all recording and performance situations.

Glossy tone bars feature a brighter sound with prominent overtones and enhanced projection. Matte finish bars have a slightly warmer sound with less overtones and a smooth, even sound. All vibe models use a height adjustable frame for maximum player comfort.

The following three vibe models use frames that can be disassembled into relatively small parts for easy transport. The extended range models are very specialized instruments created by Yamaha designers in conjunction with top players and orchestras from around in the world.



YV 4110

Range: 4 octaves, C28–C76
 Bars: Glossy finish gold aluminum alloy
 Bar sizes: 1 1/2"–2 1/4" Wide, 1/2" Thick
 Pitch: A=442Hz (other pitches available by special order)
 Motor: YVM 300 Pause-memory controller (25–150rpm)
 Height adjustment: 33 7/8"–37"
 With Matte finish gold aluminum alloy (YV 4110M)

Scale Range



YV 3910

Range: 3 1/2 octaves, C28–F69
 Bars: Glossy finish gold aluminum alloy
 Bar sizes: 1 1/2"–2 1/4" Wide, 1/2" Thick
 Pitch: A=442Hz (other pitches available by special order)
 Motor: YVM 300 Pause-memory controller (25–150rpm)
 Height adjustment: 33 7/8"–37"
 With Matte finish gold aluminum alloy (YV 3910M)

Scale Range



YV 3710

Range: 3 octaves, F33–F69
 Bars: Glossy finish gold aluminum alloy
 Bar sizes: 1 1/2"–2 1/4" Wide, 1/2" Thick
 Pitch: A=442Hz (other pitches available by special order)
 Motor: YVM 300 Pause-memory controller (25–150rpm)
 Height adjustment: 33 7/8"–37"
 With Matte finish gold aluminum alloy (YV 3710M)

Scale Range



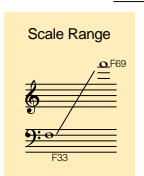
All Yamaha vibes feature a compact fan motor and pulley system. A silent pause and slider control provides quiet operation and exceptional musical expression. The YVM 300 motor is equipped with our exclusive memory system that returns the fans to a pre-determined position regardless of where the fans are when the pause button is pressed.



With fixed upper frame and parallel crossbars, our Studio vibe series is designed primarily for transport while set-up.

YV 2700(G)

Range: 3 octaves, F33–F69
 Bars: Glossy finish gold aluminum alloy (YV 2700G)
 Bars: Matte finish silver aluminum alloy (YV 2700)
 Bar sizes: 1 1/2"–2 1/4" Wide, 1/2" Thick
 Pitch: A=442Hz (other pitches available by special order)
 Motor: YVM 200 Pause controller (25–150rpm)
 Height adjustment: 31 7/8"–35"



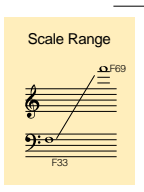
YVRD2700(G)
 with
 Multi-Frame II
 Page 11

YVT2700(G)
 with
 Toug-Terran Frame
 Page 11

The YV 1600A is an inexpensive alternative based on our more expensive model vibes. The special aluminum alloy provides exceptional tone quality and the fan motor offers variable speeds. The frame height is adjustable and the pedal is oversized for player comfort.

YV 1600A

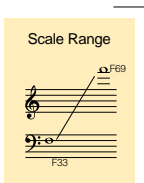
Range: 3 octaves, F33–F69
 Bars: Matte finish silver aluminum alloy
 Bar sizes: 1 1/4" Wide, 1/2" Thick
 Pitch: A=442Hz (other pitches available by special order)
 Motor: YVM 200 Pause controller (25–150rpm)
 Height adjustment: 31 1/2"–34 5/8"



As a compact, lightweight vibe, the YV 520 uses a narrow, non-graduated bar design. Professional features include accurate tuning, variable speed motor with silent on/off, sturdy frame, height adjustment, large casters, oversized pedal and double-locking pedal assembly.

YV 520

Range: 3 octaves, F33–F69
 Bars: Matte finish silver aluminum alloy
 Bar sizes: 1 1/4" Wide, 3/8" Thick
 Pitch: A=442Hz
 Motor: YVM 100 Pause controller (25–150rpm)
 Height adjustment: 31 1/2"–34 1/4"



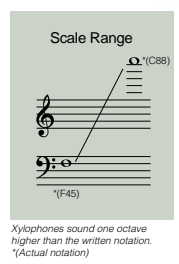
Xylophones

Yamaha offers several xylophone models to fit virtually any performance situation. The rosewood model feature bars hand-crafted from the finest Honduran rosewood for a warm, authentic sound. The Acoustalon model features our exclusive synthetic bar that is exceptionally resilient to climate changes and therefore appropriate for indoor/outdoor use. For natural wood sound and feel at an affordable price, our standard model uses padauk wood bars. While the rosewood and Acoustalon models use height adjustable frames, the padauk model uses folding legs for compact storage and transport.



YX 350A

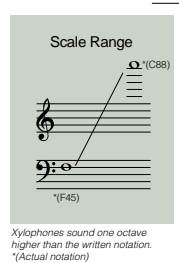
Range: 3 1/2 octaves, F45–C88
 Bars: Honduran rosewood
 Bar sizes: 1 1/2"–1 3/4" Wide, 7/8"–1" Thick
 Pitch: A=442Hz (other pitches available by special order)
 Height adjustment: 32 5/8"–37 3/8"



ACOUSTALON

YX 335

Range: 3 1/2 octaves, F45–C88
 Bars: Acoustalon
 Bar sizes: 1 1/2" Wide, 7/8" Thick
 Pitch: A=442Hz (other pitches available by special order)
 Height adjustment: 32 5/8"–37 3/8"



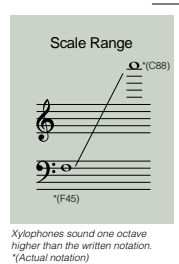
YXR0335 with Multi-Frame II Page 11

YXT335 with Temp-Terces frame Page 11



YX 135

Range: 3 1/2 octaves, F45–C88
 Bars: Padauk
 Bar sizes: 1 3/8" Wide, 3/4" Thick
 Pitch: A=442Hz (other pitches available by special order)
 Height: 34 1/4"



Multi-Frame II System

Perfect for indoor and outdoor marching activities, stage-show pits, percussion solos, and percussion ensembles, the Multi-Frame II and Tough-Terrain Frame instruments are sturdy, convenient and practical.

Highlights of the Multi-Frame II system include 1 1/2" square piping on three sides of the instrument for more protection, on three sides of the instrument for more protection, set-up options, and height adjustment by pneumatic struts for effortless height adjustments by one person. Other features include metal-hub 6" casters with in-line locking lever that locks both the swivel and hub rotation, and an easy-to-use clamp.



RD 2400



YMRD 2400



YMRD 2400 with extras

YMRD 2400

Range: 4 1/3 octaves, A25-C76

Bars: Acoustalon

Bar sizes: 1 1/2"-2 1/4" Wide, 7/8" Thick

Pitch: A=442Hz

Height adjustment: pneumatic strut system 35"-40 7/8"

Tough-Terrain Frames

The Yamaha Tough-Terrain Frame features brawny, welded steel construction and angled dual lower crossbars to protect resonators. Aggressive 10" pneumatic tires roll effortlessly over any field of play. An available hitch system means you can take your performance to places it's never been before. Truly band-director-designed, the Tough-Terrain Frame has a minimum amount of adjustments to eliminate loosening and subsequent loss of parts. In addition, the frames are height adjustable, and can be adapted to older Yamaha instruments.



T 2400



YMT 2400



YMT 2400 with extras

YMT 2400

Range: 4 1/3 octaves, A25-C76

Bars: Acoustalon

Bar sizes: 1 1/2"-2 1/4" Wide, 7/8" Thick

Pitch: A=442Hz

Height adjustment: pneumatic strut system 35"-40 7/8"

- Tough-Terrain Frames are available separately to retrofit to an existing instrument.
- Tough-Terrain Frames are available with a new instrument (and you get the standard instrument frame too in case you want to use the TTF exclusively for marching season).
- Tough-Terrain Frames fit through standard doorways.
- Tough-Terrain Frames can be towed using an optional hitch system.

Multi-Frame II/Tough Terrain Frame Components

Each Multi-Frame II model includes four RDC10 Multi-Camps.

YMRD 2400/YMT 2400

4 1/3 octave Acoustalon Multi-Frame II/Tough-Terrain Frame Marimba

YXRD 335/YMT 335

3 1/2 octave Acoustalon Multi-Frame II/Tough-Terrain Frame Xylophone

YVRD 2700/YVT 2700

3 octave Multi-Frame II/Tough-Terrain Frame Vibe

YVRD 2700G/YVT 2700G

3 octave Multi-Frame II/Tough-Terrain Frame Vibe

RD 2400/T 2400

Multi-Frame II/Tough-Terrain Frame parts to upgrade YM 2400

RD 335/T 335

Multi-Frame II/Tough-Terrain Frame parts to upgrade YX 335

RD 2700/T 2700

Multi-Frame II/Tough-Terrain Frame parts to upgrade YV 2700 or YV 2700G

RDC 10

Multi-Frame II square clamp

Glockenspiels

Several features set these glockenspiel models apart from others: the use of a new high-carbon steel material treated with a special tempering process for a pure, bright tone; and both nodal point support string with single pin bar mounting (YG 250D, YG 1210) and suspension cord system (YG 2500) to increase sustain and maximize resonance.

The extended range model also uses a pedal dampening system and built-in frame with height adjustment by pneumatic struts.



YG 2500

Range: 3 1/3 octaves, C52–E92
 Bars: High carbon steel
 Bar sizes: 1 1/4"×3/8"
 Bar mounting: Suspension cord system
 Pitch: A=442Hz (other pitches available by special order)
 Height adjustment: Pneumatic strut system 33 1/2"–41 3/8"

Scale Range

Glockenspiels sound two octave higher than the written notation.
 *Actual notation



Stand:YGS 100

YG 1210

Range: 2 1/2 octaves, F57–C88
 Bars: High-carbon steel
 Bar sizes: 1 1/4"×1/4"
 Pitch: A=442Hz
 Case cover: Removable
 Frame: Removable from case

Scale Range

Glockenspiels sound two octave higher than the written notation.
 *Actual notation



YG 1210 and YG 250D utilize nodal point support string to minimize the contact with the tone bar. In combination with single pin bar mounting, this system affords excellent sustain, purity of tone and superb resonance from the bars.



Stand:YGS 70

YG 250D

Range: 2 1/2 octaves, F57–C88
 Bars: High-carbon steel
 Bar sizes: 1 1/8"×1/4"
 Pitch: A=442Hz
 Case cover: Removable
 Frame: Fixed in case

Scale Range

Glockenspiels sound two octave higher than the written notation.
 *Actual notation

Chimes

The YCH 585 features 1 1/2" Deagan tubes made with our exclusive Yamaha/Deagan tuning and voicing method to deliver true pitch, full-bodied sound and superior resonance. A clear lacquer finish over the matte brass tubes reduces glare from lights or the sun. Its' extended range (C40–G59) satisfies more repertoire requirements, and the full width damper pedal offers smooth operation and playing convenience. A reinforced frame with 4" casters provides stability and durability during play and transport.



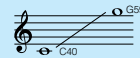
YCH 585

Range: 1 1/2 octaves, C40–G59

Deagan Tubes: Clear lacquer, 1 1/2" diameter (Fine Tuned in USA)

Pitch: A=442Hz

Scale Range



The range given above is one octave lower the actual frequency made by tubes. The pitch heard by the ear is one octave lower due to the overtones produced by the tube.

Damper

The YCH 585 incorporates a three-board damper box for effective muffling of the tubes, and a low friction bearing mechanism ensures smooth operation. A one-touch damper stopper holds the boards open without pedaling.



Base

For superior stability and strength, our base is designed with a low center of gravity, dual crossbars and 4" casters. The full width damper pedal provides convenient pedaling from any playing position.



Deagan Chimes

Utilizing original specifications and procedures, Deagan chimes and Symphonic bells by Yamaha maintain the traditional quality and craftsmanship that made Deagan famous. Significant structural improvements and consistent production methods are incorporated, so the Deagan instruments can exceed the demands of today's professional percussionist.

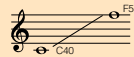


DC 9190A

DC 9190A

Range: 1 1/2 octaves, C40–F57
Tubes: Chrome, 1 1/2" diameter
Pitch: A=442Hz
Made in U.S.A.

Scale Range

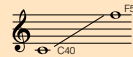


The ranges given above are one octave lower the actual frequency made by tubes. The pitch heard by the ear is one octave lower due to the overtones produced by the tube.

DC 9160A

Range: 1 1/2 octaves, C40–F57
Tubes: Chrome, 1 1/4" diameter
Pitch: A=442Hz
Made in U.S.A.

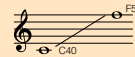
Scale Range



DC 9150A

Range: 1 1/2 octaves, C40–F57
Tubes: Gold Satin Finish, 1 1/4" diameter
Pitch: A=442Hz
Made in U.S.A.

Scale Range



DEAGAN SYMPHONIC CHIMES—DC 9190A

The DC 9190A Symphonic chimes feature 1 1/2" diameter chime tubes with extra wall thickness to produce a full, rich sound. Each set of tubes is individually tested and hand-tuned to ensure proper pitch and harmonic voicing.

DEAGAN CONCERT CHIMES—DC 9160A & DC 9150A

Developed for educational use, our Concert chimes series uses 1 1/4" chime tubes and features quality response and projection in a lighter weight instrument. As with our other models, each set of tubes is individually tested and hand-tuned to ensure proper pitch and harmonic voicing.

Deagan Bells

Our professional Symphonic series bells feature bars made of high-grade, tempered steel for exceptional purity and brightness, and maximum duration of tone. Each bar is carefully hand-tuned for superb intonation and is mounted with a single recessed screw to promote sustain.

A maple frame further enhances the instrument's tone and projection.

DG 1590A

Range: 2 1/2 octaves, G59–C88
Bars: High carbon Steel, 1 1/4" wide, 3/8" thick
Pitch: A=442Hz
Frame: Maple with 4 rubber feet
Made in U.S.A.

Scale Range



*Glockenspiels sound two octave higher than the written notation.
Actual notation



Timpani

TP 9000 Grand Concert Series

Designed and tested with the assistance of professional timpanists from around the world, the TP 9000 series timpani are the ideal choice for timpanists, orchestras and universities in need of a high caliber instrument. Because they are crafted with extreme attention to detail and under strict mechanical tolerances, they produce a pure, unencumbered tone with outstanding sustain.

Features include heavy-duty frame, rim and tuning rods, a ball bearing pedal locking system and a fine tuner. Both Dresden and Berlin type pedal systems are available in standard or German configuration. In addition, all models feature the clear, resonant sound of the Yamaha hand-hammered bowl, as well as, extended tuning gauge, quiet mechanisms and adjustable footboard/kick plate relationship.



Bowl and Frame

Heavy duty frames support precision-spun, hand-hammered copper bowls to produce beautifully pure resonance and deep, rich tones.



Tuning gauge

In addition to letter names, the extended tuning gauge uses accidental indicators for more accurate visual tuning.

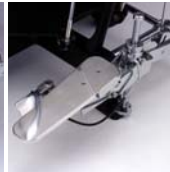


TP 9000B



Foot adjuster

Tilting stabilizers are adjustable to solidify the playing position of each timpano, especially on uneven stages. Optional longer versions are available to accommodate sharper playing angles, or choose built-in wheels that lock securely during play and aid quick movements around stage or rehearsal rooms.



Dresden and Berlin type pedal

Both versions use our clutch (ball bearing) pedal locking system for a reliable hold of any note within the range. The adjustable footboard/kick plate relationship accommodates individual player preference. Ratchet locking system is also available for Berlin-type pedal.

(Left: TP 9000D, Right: TP 9000B, Below: TP 9000R)

Pedal Locking system Size	Dresden-type	Berlin-type	
	Clutch	Clutch	Ratchet
20"	TP 9020D	TP 9020B	TP 9020R
23"	TP 9023D	TP 9023B	TP 9023R
24"	TP 9024D	TP 9024B	TP 9024R
26"	TP 9026D	TP 9026B	TP 9026R
27"	TP 9027D	TP 9027B	TP 9027R
29"	TP 9029D	TP 9029B	TP 9029R
32"	TP 9032D	TP 9032B	TP 9032R



Timpani with case

Special cases are offered for safe, secure transport. Rolling carts are included with standard models.



Timpani

Our balanced pedal timpani are available in four different models depending on your specific musical needs. Features like our unique bowl shape for tone clarity and superb resonance, cable-linked tuning gauge for consistent tuning reference and key-only adjustments to avoid unwanted tampering are incorporated in each series.

TP 7200 Hand-Hammered Symphonic Series

A hand-hammered bowl and heavy rim set this series apart. Hammering is done by craftsmen, not machine, to ensure the entire surface of the bowl is hammered. This process results in a clearer tone with less unwanted overtones. The weight and rigidity of the 4mm steel rim absorbs less vibration to allow more head sustain and provides consistent tension throughout the tuning range.



TP 6200 Symphonic Series

As with our Hand-Hammered Symphonic series, the Symphonic series uses heavy, high-grade copper bowls spun with precision to ensure uniform wall thickness for pure resonance and a beautiful tone. To further enhance dynamic range and tonal projection, the bowls are freely suspended in a steel support ring. This design allows pure, undistorted sound even at dynamic extremes.



TP 4200 Concert Series

Our 4200 Concert series timpani feature uniquely shaped bowls made of FRP™ (Fiberglass Reinforced Plastic) that deliver enough sound to fill the hall while being both lightweight and durable. They boast many of the same features of our Symphonic series with the exception of freely suspended bowl and PAC.



TP 3000 Portable Concert Series

For various performance situations, three locking positions for both the legs and the pedal heel allow five practical height/angle combinations. Combined with the positive pedal feel and the overall lightweight design, this series is a must for the professional timpanist needing a travel set of timpani.



Pedal Adjustment Clutch (TP 7200, 6200 series)

Our exclusive PAC system allows percussionists to tailor the pedal's feel to meet their individual playing style.



Tuning Gauge

Letters with accidental indicators offer silent tuning reference, while an enclosed housing ensures smooth operation and lasting durability.



Compact and Lightweight TP 3000 Series

Folding pedal and retractable legs reduce packing space, while FRP bowl and streamlined mechanisms reduce overall weight.

Concert Snare Drums

Percussionists need a snare drum that will respond well in a variety of musical settings. Conductors need a snare drum with a clear, articulate tone. Through a unique combination of materials and specifications, the Concert Series snare drums can satisfy both. All models utilize extra smooth and quiet strainer systems for quick on/off operation without excess noise, and the 14-inch models feature a 10-lug design for precise tuning control.

The maple, copper and birch shell models feature extended, brass cable snares that balance sensitivity with clear articulation at all dynamic levels. Perfect for all-around concert applications, the two steel shell models use coiled wire snares made of hard, high-carbon steel. These snares offer bright, delicate response and make sustained, legato press roles easy to play.



CSM 1465

Size: 14"×6 1/2"
Shell: 6-ply Maple
Rim: 2.3 mm steel, triple-flange
Snares: 0.6 mm brass cable; 14 strand
Strainer System: Extended extra smooth type
Head: Batter: Coated Ambassador Snare; Clear Ambassador
Exterior Finish: Natural Vintage
Interior Finish: Natural Vintage



CSS 1465

Size: 14"×6 1/2"
Shell: 1.2 mm Steel
Rim: 1.6 mm steel, triple-flange
Snares: Hard, high-carbon steel; 20 strand
Strainer System: Extra smooth type
Head: Batter: Coated Ambassador Snare; Clear Ambassador
Exterior Finish: Black powder coating
Interior Finish: Black powder coating



CSC 1455

Size: 14"×5 1/2"
Shell: 1.2 mm Copper
Rim: 2.3 mm steel, triple-flange
Snares: 0.6 mm brass cable; 14 strand
Strainer System: Extended extra smooth type
Head: Batter: Coated Ambassador Snare; Clear Ambassador
Exterior Finish: Clear lacquer
Interior Finish: None



CSS 1455

Size: 14"×5 1/2"
Shell: 1.2 mm Steel
Rim: 1.6 mm steel, triple-flange
Snares: Hard, high-carbon steel; 20 strand
Strainer System: Extra smooth type
Head: Batter: Coated Ambassador Snare; Clear Ambassador
Exterior Finish: Black powder coating
Interior Finish: Black powder coating



SS745

Concert height stand with single braced legs



CSB 1345

Size: 13"×4 1/2"
Shell: 6-ply Birch
Rim: 1.6 mm steel, triple-flange
Snares: 0.6 mm brass cable; 14 strand
Strainer System: Extended extra smooth type
Head: Batter: Coated Ambassador Snare; Clear Ambassador
Exterior Finish: Natural Vintage
Interior Finish: Natural Vintage

Natural Vintage Finish

This original finish formulated by Yamaha not only beautifies the look of the shell, but actually enhances its' dynamic range and sustain. It also seals the wood from humidity variations to protect the shell and make it more consistent sonically. (Note: exposure to light changes the shell color to a golden brown over a 4-6 month period.)

Concert Toms

Yamaha single-headed concert toms feature birch and mahogany shells to produce a full, directional sound which is dry and has a sharp attack. Concert toms are available in black.



Tom stand WS 860 (Optional)

The WS 860 tom stand utilizes a ball and socket design for complete adjustment and stability. The stand features a strong double-braced leg design, and securely supports two drums.

Specifications

Models	size	Shell
CT 806	6"×5 1/2"	8-ply birch/mahogany
CT 808	8"×5 1/2"	8-ply birch/mahogany
CT 810	10"×6"	8-ply birch/mahogany
CT 812	12"×8"	8-ply birch/mahogany
CT 813	13"×9"	8-ply birch/mahogany
CT 814	14"×10"	8-ply birch/mahogany
CT 815	15"×12"	8-ply birch/mahogany
CT 816	16"×14"	8-ply birch/mahogany

Concert Bass Drums

Yamaha concert bass drums CB 600 series feature an 8-ply birch/mahogany shell made using our unique Air-Seal System process. They also feature one-piece, high tension lug casings, along with drum key tension rods to allow freedom of movement during performance. For tuning accuracy, natural tone, and long-term durability, the hoops are made of 10-ply birch/mahogany, and are constructed the same way as the drum shells.



CB 636

Stand: BS 753



CB 628

Stand: BS 751



CB 632

Stand: BS 751



CB 640

Stand: BS 753

Our CB 840B has set a standard of excellence with superb construction, a powerful tone and outstanding fundamental sustain. The all-birch shell is fitted with solid steel hoops and specially designed small-body lugs for maximum shell resonance. Legacy heads provide a warm, natural sound.



CB 840B

Concert Bass Drum 600 Series and 800 Series

Specifications

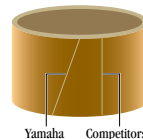
Models	Size	Shell	Rim	Lug	Stand
CB 640	40"×18"	birch/mahogany	birch/mahogany	16	—
CB 636	36"×16"	birch/mahogany	birch/mahogany	12	—
CB 632	32"×16"	birch/mahogany	birch/mahogany	12	—
CB 628	28"×14"	birch/mahogany	birch/mahogany	10	—
CB 840B	40"×22"	9-ply birch/darkwood stain finish	solid steel	10	included

Air Seal System™

Yamaha shells are made using a unique Air-Seal System process for a drum that starts round and stays round. Carefully selected woods are cut in plies, positioned with staggered diagonal seams and sealed together with evenly distributed air pressure.

To eliminate weak points and extra stress, diagonal seams distribute the point of shell separation over a wider area than a vertical seam.

In addition, these seams are staggered evenly throughout the shell. This design provides superior shell strength for a drum that always maintains its shape. An in-round drum provides a true fundamental pitch, tunes easily, projects purely and feels better to play—"A round drum is a happy drum!"



Yamaha Seam Competitor's Seam

Accessories



Percussion Hardware

Concert Bass Drum Stands

All stands feature Yamaha quality and construction with convenient designs.

- BS-125:**
Concert bass drum portable folding bass stand
- BS-425:**
Concert bass drum semi-portable rolling stand
- BS-751:**
Concert bass drum tiltable stand with casters for 26" and 32"
- BS-753:**
Concert bass drum tiltable stand with casters for 36" and 40"



BS-125



BS-425



BS-753

Stands and Attachments

Cymbal Stands

- CCH1:**
One tier crash cymbal holder with MS-925 base
- CCH2:**
Two tier crash cymbal holder with MS-925 base
- CCHTOP:**
One tier crash cymbal holder top; fits 7/8" and 1" stand openings
- CCHTOP2:**
Two tier crash cymbal holder top; fits 7/8" and 1" stand openings
- CCH-CRADLE:**
Two crash cymbal arms with bracket for 1" tube

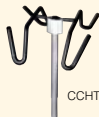
- SCH1:**
Suspended cymbal holder with MS-925 base (cymbal requires strap)
- SCHTOP:**
Suspended cymbal holder top; fits 7/8" stand openings (cymbal requires strap)

Drum Stands

- SS-655:**
Snare drum stand; concert height; lightweight; single braced
- SS-745:**
Snare drum stand; concert height; medium weight; single braced
- WS-860:**
Double tom stand; medium weight; double braced
- YGS-70:**
Bell stand
- YGS-100:**
Rolling bell stand/trap table



CCH2



CCHTOP1



SCH1



SS-745















YGS-70



YGS-100

Percussion Accessories & Parts

<p>Woodblocks</p> <p>YWB-100: Medium woodblock; one piece solid maple</p> <p>YWB-200: Large woodblock; one piece solid maple</p>  <p>YWB-100 YWB-200</p>	<p>Slapstick</p> <p>YS-200: Slapstick</p>  <p>YS-200</p>	<p>Tambourines</p> <p>YT-100: 10" Concert Tambourine; 6-ply maple shell; staggered double row, silver jingles; skin head</p> <p>YT-300: 10" Virtuoso Tambourine; 10-ply maple shell; staggered double row, silver/phosphorus bronze jingles with goat skin head</p>  <p>YT-100 YT-300</p>	
<p>Triangles</p> <p>YST-4: 4" Symphonic triangle</p> <p>YST-6: 6" Symphonic triangle</p> <p>YST-8: 8" Symphonic triangle</p> <p>YST-10: 10" Symphonic triangle</p>  <p>YST-4, 6, 8, 10</p>		<p>Triangle Accessories</p> <p>TB-3: Set of three Symphonic triangle beaters; with color grips and carrying case</p> <p>TB-6: Set of six Symphonic triangle beaters; with color grips and carrying case</p> <p>YTC-1: The Clipper™, single triangle clip</p>  <p>YTC-1</p>	
<p>Triangle Cases</p> <p>YSTC-4: Holds 4" triangle</p> <p>YSTC-6: Holds 6" triangle</p> <p>YSTC-8: Holds 8" triangle</p> <p>YSTC-10: Holds 10" triangle</p>  <p>YSTC-4 YSTC-6 YSTC-8 YSTC-10</p>		<p>Hand-Held Accessories</p> <p>YHH-100: Hand-held percussion carry-all; fits one or two tambourines with various percussion items</p>  <p>YHH-100</p>	
<p>Practice Kits and Practice Pads</p> <p>Tools to assist beginning students and professionals in practice and music education.</p> <p>Strike Force Percussion Acc. Kit</p> <p>DA-SKIT: StrikeForce Percussion Accessories Kit</p> <p>DA-PKIT: Performance Mallet Kit</p> <p>DA-SHKIT: Student Hand-Held Kit</p> <p>DA-PHKIT: Performance Hand-Held Kit</p>  <p>DA-SKIT DA-PKIT</p>		<p>Practice Pads</p> <p>PP-100: Chop Block practice pad; 7" double sided</p> <p>PP-110: Chop Block practice pad; 7" single sided with threaded receiver</p> <p>PP-200: Chop Block practice pad; 9" double sided</p> <p>PP-250: Chop Block practice pad; 9" single sided with subtle snare sound</p>  <p>PP-100, 110, 200, 250</p>	
<p>Drum Keys</p> <p>DK-10: Drum key</p> <p>DK-30: Power drum key</p> <p>TK-40: Timpani key</p> <p>TK-90: Timpani key; TP9000 series</p>  <p>DK-30, DK-10, TK-40</p>		<p>Concert Accessories</p> <p>MU-SNARE: Felt concert snare drum mute; includes attachment string</p>  <p>MU-SNARE</p>	<p>MU-BASS: Multi-Utility Towel; mutes concert bass; covers music stand; catch-all bag</p>  <p>MU-BASS</p>

Percussion Cases

Hard Cases

Hard cases provide protection for travel under the bus or in the equipment truck. Easy access slots, wheels and slim design are easy to load and move.

PCH-YM2400

Medium duty road case for YM-2400 marimba (set of two)

PCH-32AUB

MBL-832AU Multi-Application bells case

PCH-32AFX

MXL-322AF Multi-Application xylophone case

PCH-1590

Deagan DG-1590A Symphonic bells case

PCH-TP90XX

ATA case for TP-9000 series timpani



PCH-YM2400

Concert Snare Drum Cases

Feature plush interior with a rugged Cordura® type exterior.

CSC-1455
Soft-side case for concert snare CSB-1345 (13" x 4 1/2" drum)

PCS-1455
Soft-side case for concert snare CSC-1445 and CSS-1455 (14" x 5 1/2" drum)

PCS-1465
Soft-side case for concert snare CSM-1465 and CSS-1465 (14" x 6 1/2" drum)



PCS-1455

Soft Cases

Lightweight durable bags offer easy carrying convenience and protection. They are perfect for the working professional or ensemble.

PCS-YM4600A

Soft cases for YM-4600A marimba (set of five)

PCS-YM4900A

Soft cases for YM-4900A marimba (set of five)

PCS-YM5100A

Soft cases for YM-5100A marimba (set of five)

PCS-YV3710

Soft cases for YV-3710 and YV-3710M vibes

PCS-YV3910

Soft cases for YV-3710 and YV-3910M vibes

PCS-YV2700

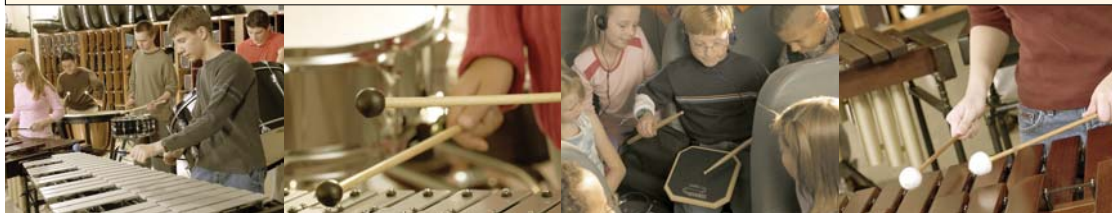
Soft cases for YV-2700 or YV-2700G vibes

PCS-YX-335

Soft cases for YX-335 xylophone



PCS-YM5100A



Percussion Covers

Timpani Protective Head Covers

Black leatherette with felt lining.

TAC-020

20"

TAC-023

23"

TAC-026

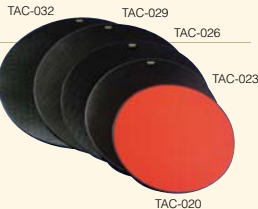
26"

TAC-029

29"

TAC-032

32"



TAC-032

TAC-029

TAC-026

TAC-023

TAC-020

Drop Covers

Timpani

Water resistant nylon material with padded no-scratch lining; 15" (short) drop and 27" (long) drop.

TDC20S

20"; short

TDC23S

23"; short

TDC26S

26"; short

TDC29S

29"; short

TDC32S

32"; short

TDC04S

Set of 4: 23", 26", 29", 32"; short

TDC20L

20"; long

TDC23L

23"; long

TDC26L

26"; long

TDC32L

32"; long

TDC04L

Set of 4: 23", 26", 29", 32"; long

Chime

DCC-100

Chime cover; black Cordura; DC-9150A / DC-9160A / DC-9190A / YCH-585

Bass Drum

CBC-100

Concert bass drum cover; black Cordura; fits 28" to 32" bass drums

CBC-200

Concert bass drum cover; black Cordura; fits 36" to 40" bass drums

CBC-300

Concert bass drum cover; black Cordura; fits 40" x 22" bass drums

Mallet Keyboard Covers

Water resistant nylon material with padded no-scratch lining; 6" drop.

TAC-YM40DC

Marimba YM-40

TAC-YM1430DC

Marimba YM-1430

TAC-YM2300DC

Marimba YM-2300/2400

TAC-YM4600DC

Marimba YM-4600

TAC-YM4900DC

Marimba YM-4900

TAC-YM5100DC

Marimba YM-5100

TAC-YM6000DC

Marimba YM-6000/6000A

TAC-YV1600DC

Vibe YV-1600

TAC-YV520DC

Vibe YV-520

TAC-YV2500DC

Vibe YV-2500/2600/2700/2700G

TAC-YV3300DC

Vibe YV-3300/3400/3710

TAC-YV3910DC

Vibe YV-3910/3910M

TAC-YX135DC

Xylophone YX-135

TAC-YX330DC

Xylophone YX-330

TAC-YX360DC









Xylophone YX-360/335/350

TAC-YV4110DC

Vibe YV-4110/4110M Before TAC-YX135DC



Drumsticks & Mallets

<p>Concert Drumsticks</p> <p>Both models are made with the same North American maple Yamaha uses for its world class drumsets.</p> <p>YS-PPC Pianissimo model; length=16" YS-ORC Orchestral model; select maple length=16 1/4"</p>  <p>YS-PPC & YS-ORC</p>	<p>Timpani Mallets</p> <p>Ideal for all levels of performance, each pair is precision matched for weight and pitch to give the best feel possible. <i>Length=14 1/2"</i></p> <p>YTM-1 Orange band; legato; timpani mallets YTM-2 Blue band; general purpose; timpani mallets YTM-3 Yellow band; soft staccato; timpani mallets YTM-4 Green band; medium staccato; timpani mallets YTM-5 Maroon head with white band; hard staccato; timpani mallets YTM-6 Red band; wood; timpani mallets</p>	<p>Deagan Chime Mallets</p> <p>Two models feature easy-to-grip tapered handles and a head that produce a strong fundamental tone.</p> <p>DCM-11002 Rawhide; Deagan chime mallet DCM-15002 Plastic; Deagan chime mallet; ideal for outdoor use</p>  <p>DCM-11002</p>	<p>Two-tone Keyboard Mallets</p> <p>Achieves a perfect combination of sounds with very distinct hard and soft timbre.</p> <p><i>Length=17 1/4"</i> MTR-10 Red with white stitch; hard to medium-soft; rattan shaft; Two-tone mallets MTB-10 Red with white stitch; hard to medium-soft; birch shaft; Two-tone mallets</p> 
<p>Artist-Master Concert Bass Drum Mallets</p> <p>Available in five models to suit any musical style, these mallets are precisely balanced to maximize sound control.</p> <p><i>Length=16 1/2"</i> CBM-100F Ultra-staccato; single; felt; Artist-Master concert bass drum mallet CBM-200S Staccato; single; pile; Artist-Master concert bass drum mallet CBM-300M General; single; pile; Artist-Master concert bass drum mallet</p>	<p>CBM-400M Legato; single; pile; Artist-Master concert bass drum mallet CBM-500R General; pair; pile; rollers; Artist-Master concert bass drum mallet</p> 	<p>Artist-Master™ Gong Mallets</p> <p>Feature 7/8" maple shafts and yarn wound solid core heads for full sound and feel.</p> <p><i>Length=17 1/4"</i> YGM1 Light; Artist-Master gong mallet YGM1 General; Artist-Master gong mallet YGM1 Heavy; Artist-Master gong mallet</p>	<p>Two-tone Keyboard Mallets</p> <p>Achieves a perfect combination of sounds with very distinct hard and soft timbre.</p> <p><i>Length=17 1/4"</i> MTR-10 Red with white stitch; hard to medium-soft; rattan shaft; Two-tone mallets MTB-10 Red with white stitch; hard to medium-soft; birch shaft; Two-tone mallets</p> 
<p>Professional Series Keyboard Mallets</p> <p>Feature unique semi-flexible birch shafts, durable yarn and unique mushroom shape head.</p> <p><i>Length=17 1/4"</i> MP-01 Red tape; medium-hard; Professional series mallets MP-02 Yellow tape; medium; Professional series mallets MP-03 Light pink tape; medium-soft; Professional series mallets</p>	<p>MP-04 Green tape; soft; Professional series mallets MP-05 Blue tape; extra soft; Professional series mallets</p>  <p>MP-01, 02, 03, 04, 05</p>	<p>Keiko Abe Signature Series Mallets</p> <p>MKA-01 Red tape; Two-tone; Keiko Abe Signature marimba mallets MKA-02 Pink tape; very hard; Keiko Abe Signature marimba mallets MKA-03 Orange tape; hard; Keiko Abe Signature marimba mallets MKA-04 Yellow tape; hard; Keiko Abe Signature marimba mallets</p>	<p>MKA-05 Light green tape; medium-hard; Keiko Abe Signature marimba mallets MKA-06 Green tape; medium-soft; Keiko Abe Signature marimba mallets MKA-07 Blue tape; soft; Keiko Abe Signature marimba mallets MKA-07 Blue; Light blue; soft; Keiko Abe Signature marimba mallets MKA-08 Light blue tape; soft; Keiko Abe Signature marimba mallets MKA-09 Purple tape; very soft; Keiko Abe Signature marimba mallets</p>
<p>Virtuoso Keyboard Mallets With Birch Shafts</p> <p>The Virtuoso yarn mallets have been adapted with a unique semi-flexible birch shaft.</p> <p><i>Length=17 1/4"</i> MVB-4010 Yellow; hard; Virtuoso mallet with birch shaft MVB-4020 Peach; medium-hard; Virtuoso mallet with birch shaft MVB-4030 Light green; medium; Virtuoso mallet with birch shaft</p>	<p>MVB-4040 Light purple; medium-soft; Virtuoso mallet with birch shaft MVB-6040 Blue; soft; Virtuoso mallet with birch shaft MVB-6050 Dark blue; extra soft; Virtuoso mallet with birch shaft MVB-8040 White with red stitch; Virtuoso mallet with birch shaft MVB-8060 White with yellow stitch; Virtuoso mallet with birch shaft MVB-8080 White with blue stitch; Virtuoso mallet with birch shaft</p>	 <p>MVB Series</p>	 <p>MV Series</p>
<p>Virtuoso Keyboard Mallets With Rattan Shafts</p> <p>Handmade heavyweight mallets with thick rattan shafts for improved response and feel.</p> <p>Yarn Wound <i>Length=15 3/4"</i> MV-4000H Red; yarn wound; two-tone; hard; Virtuoso mallet with rattan shaft MV-4000S Red; yarn wound; two-tone; soft; Virtuoso mallet with rattan shaft MV-4010 Yellow; yarn wound; hard; Virtuoso mallet with rattan shaft</p>	<p>MV-4020 Peach; yarn wound; medium-hard; small Virtuoso mallet with rattan shaft MV-4030 Light green; yarn wound; medium-soft; small Virtuoso mallet with rattan shaft MV-4040 Light purple; yarn wound; soft; small Virtuoso mallet with rattan shaft MV-6040 Blue; yarn wound; soft; medium Virtuoso mallet with rattan shaft MV-6050 Dark blue; yarn wound; very soft; medium Virtuoso mallet with rattan shaft MV-8040 Red stitch; yarn wound; medium-soft; large Virtuoso mallet with rattan shaft</p>	<p>MV-8060 Yellow stitch; yarn wound; very soft; large Virtuoso mallet with rattan shaft MV-8080 Blue stitch; yarn wound; extra soft; large Virtuoso mallet with rattan shaft</p> <p>Cord Wound <i>Length=15 3/4"</i> MV-5010 Bright red; cord wound; hard; small Virtuoso mallet with rattan shaft MV-5020 Pink; cord wound; medium-hard; small Virtuoso mallet with rattan shaft MV-5030 Green; cord wound; medium-soft; small Virtuoso mallet with rattan shaft</p>	<p>MV-5040 Blue; cord wound; soft; small Virtuoso mallet with rattan shaft MV-7040 Purple; cord wound; soft; medium Virtuoso mallet with rattan shaft</p>

Drumsticks & Mallets

Artist Master™ Keyboard Mallets

Mallets for everyday percussion use.

Unwound

- KRB-1B/F/R**
Black rubber; extra soft
- KRB-2B/F/R**
Tan rubber; soft
- KRB-3B/F/R**
Brown rubber; medium-soft
- KRB-4B/F/R**
Light green rubber; medium
- KRB-5B/F/R**
Dark green rubber; medium-hard
- KRB-6B/F/R**
Gray rubber; hard
- KWB-7B/F/R**
Large maple; medium
- KWB-8AB/F/R**
Large rosewood; hard
- KBB-9B/F/R**
Brass; hard
- KPB-91B/F/R**
Poly ball; medium-hard
- KPB-92B/F/R**
Lexan; hard
- KPB-93B/F/R**
White phenolic; extra hard; 1" diameter
- KPB-10B/F/R**
Black phenolic; extra hard; 1 1/2" diameter

Yarn Wound

- KYB-11B/F/R**
Yellow; hard
- KYB-12B/F/R**
Green; medium-hand
- KYB-13B/F/R**
Blue; medium
- KYB-14B/F/R**
Red; medium-soft
- KYB-15B/F/R**
Aqua; soft
- KYB-16B/F/R**
Orange; extra soft
- KYB-61B/F/R**
Yellow; mushroom; medium

Cord Wound

- KCB-21B/F/R**
Yellow; hard
 - KCB-22B/F/R**
Green; medium-hand
 - KCB-23B/F/R**
Blue; medium
 - KCB-24B/F/R**
Red; soft
 - KCB-25B/F/R**
Silver; jazz
 - KCB-62B/F/R**
Yellow; mushroom; medium
- B:** Birch; Length=15 1/4"
F: Fiberglass; Length=15 1/4"
R: Rattan; Length=15 1/4"

Yamaha Educational Keyboard Mallets

Durable lightweight mallets with Fiberglass Reinforced Plastic™ (FRP) shafts, for smaller hands.

Dual Head

- Length=13 1/2"**
- ME-10W**
Blue and white; hard and soft

Hard Rubber

- Length=14 3/4"**
- ME-101**
Black; very hard
- ME-102**
Yellow; hard
- ME-103**
Orange; medium-hard
- ME-104**
Red; medium-soft
- ME-105**
Purple; soft

Yarn Wound

- Length=15 1/8"**
- ME-201**
Red; hard
- ME-202**
Yellow; medium-hard
- ME-203**
Peach; medium-soft
- ME-204**
Green; soft

Cord Wound

- Length=15 3/4"**
- ME-301**
Red; hard
- ME-302**
Orange; medium-hard
- ME-303**
Pink; medium-soft
- ME-304**
Green; soft

Yamaha Standard Keyboard Mallets

Medium weight mallets with rattan shaft.

Brass & Ebonite

- Length=11 13/16"**
- MR-840**
Very hard; brass & ebonite

Hytel

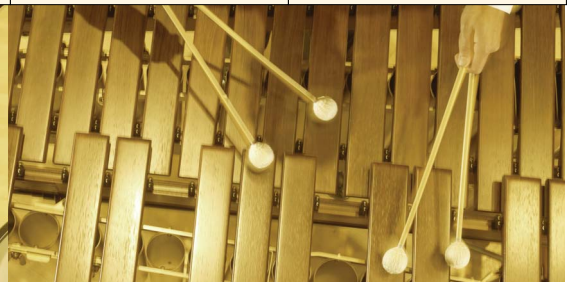
- Length=14 5/8"**
- MR-930**
Large; Hytel

StrikeForce™ Mallets

Designed for young percussionists.

Length=13"

- KPSF**
Black phenolic; extra hard bell mallets



The Secret Behind Yamaha's Concert Percussion

The communication takes place among designers, craftsmen and players, and it is constant. For more than three decades now we have been working with some of the world's greatest players designing and crafting the instruments of their dreams. Players know what they want, and we know what we can give them. But they inspire us to go beyond what we "know" we can do, just as we help them go farther than they thought they could. That's the magic of communication. That's the spirit of our percussion.



Keiko Abe



James Armstrong



Ted Atkatz



Amy Lynn Barber



John H. Beck



John R. Beck



John Beckford



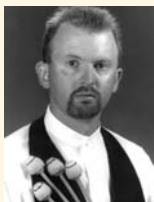
Dave Black



Robert Bridge



Robert Breithaupt



Ken Broadway



George Brown



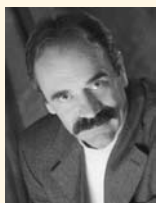
David Buzminsky



James Campbell



Homero Cerone



Robert Chappell



Rafael Christen (Switzerland)



Anthony Cirone



David Collier



J.C. Combs



Orlando Cotto



Niel DePonte



Theresa Dimond



Larry Doran



Brad Dutz



F. Feza Zweifel



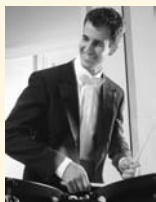
Gary Fink



David Friedman



Jean Geoffroy (France)



Tim Genis



Terry Gibbs



Michael Gould



Dean Gronemeier



Dave Hagedorn



Chris Hanning

ssion is Communication!



Scott Harris



Ed Hartman



Steve Hobbs



Gary Hodges



Richard Holly



Gifford Howarth



Billy Hulting



Marc Jacoby



Vicki Jenks



Howard Joines



Momoko Kamiya (Japan)



Laurence Kaptain



Michael Kingan



Rebecca Kite



Frank Kumor



Barry Larkin



Larry Lelli



Stanley Leonard



Kevin Lepper



Don Liuzzi



Mike Mainieri



Dave Mancini



Stuart Marrs



Barrett Martin



Victor Mendoza



Nanac Mimura



Dan Moore



Jeff Moore



Isao Nakamura (Germany/Japan)



David Nyberg



Jim Peterscak



Nick Petrella



Federico Poli (Italy)



Salvatore Rabbio



Will Rapp



Chuck Redd



Emil Richards



Anthony Robinson



Ney Rosauro



Patrick Roulet



Ed Saindon



Dave Samuels



Jim Sewrey



Mark Sherman



Larry Snider



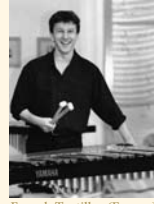
Andrew Spencer



Naoko Takada



Jason Taylor



Franck Tortiller (France)



Ben Toth



Mike Varner



Michael Waldrop



Doug Walter



Norman Weinberg



Jeff White



William Scott-Deal



Dean Witten



Brian Zator



Nebojsa Zivkovic

Dimensions and Weight

MARIMBA	Dimensions (W x D)	Weight
YM 5104A	110 5/8" x 40 1/2"	218 lbs
YM 6000	108 1/4" x 45 1/2"	235 3/4 lbs
YM 6000A	108 1/4" x 45 1/2"	246 3/4 lbs
YM 5100A	102 3/4" x 40 1/2"	211 1/2 lbs
YM 4900A	92 1/2" x 37 3/4"	171 3/4 lbs
YM 4600A	86 1/4" x 35 7/8"	149 3/4 lbs
YM 2400	78" x 34 5/8"	134 1/4 lbs
YMRD 2400	87 1/2" x 42"	191 5/8 lbs
YM 1430	74" x 33 1/8"	108 lbs
YM 40	74" x 33 1/8"	108 lbs

VIBRAPHONE	Dimensions (W x D)	Weight
YV 4110	72 7/8" x 32 5/8"	207 lbs
YV 3910	56 1/4" x 32 1/4"	134 1/4 lbs
YV 3710	56 1/4" x 32 1/4"	127 3/4 lbs
YV 2700	56 1/4" x 32 1/4"	114 1/2 lbs
YVRD 2700	65 7/8" x 37 5/8"	161 7/8 lbs
YV 2700G	56 1/4" x 32 1/4"	114 1/2 lbs
YVRD 2700G	65 7/8" x 37 5/8"	161 7/8 lbs
YV 1600A	48 7/8" x 29 1/8"	83 3/4 lbs
YV 520	41 3/4" x 26 3/4"	68 1/4 lbs

XYLOPHONE	Dimensions (W x D)	Weight
YX 350A	57 1/8" x 30 3/4"	79 1/4 lbs
YX 335	54" x 31 1/2"	79 1/4 lbs
YXRD 335	64 3/8" x 37 1/4"	132 1/8 lbs
YX 135	48 3/8" x 24 3/8"	48 1/2 lbs

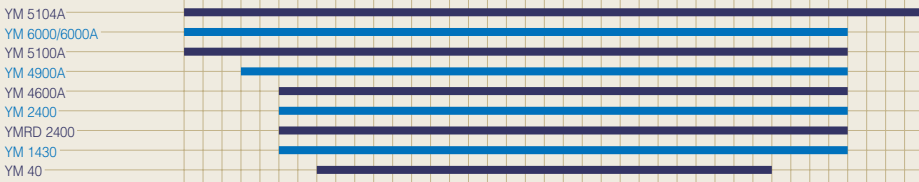
GLOCKENSPIEL/BELL	Dimensions (W x D x H)	Weight
YG 2500	41 3/4" x 22"	79 lbs
YG 1210	32" x 19" x 5"	35 lbs (case included)
YG 250D	29" x 18" x 3"	21 lbs (case included)
DG 1590A	30" x 18"	30 lbs

CHIME	Dimensions (W x D x H)	Weight
YCH 585	33 7/8" x 26 3/4" x 70 3/4"	185 lbs
DC 9190A	33" x 24 1/2" x 71"	167 lbs
DC 9160A	33" x 24 1/2" x 66 1/2"	125 lbs
DC 9150A	33" x 24 1/2" x 66 1/2"	125 lbs

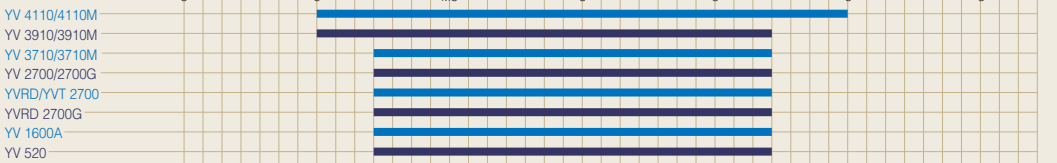
Scale Range



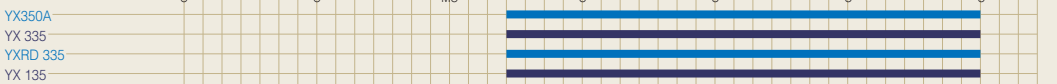
MARIMBA



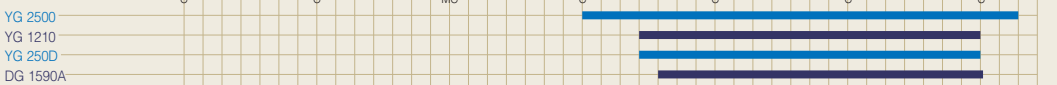
VIBRAPHONE



XYLOPHONE



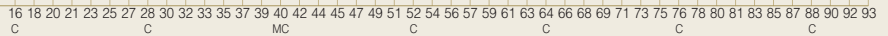
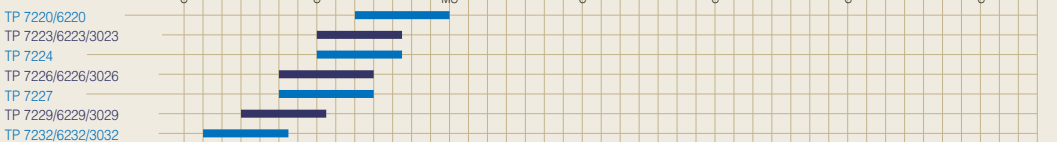
GLOCKENSPIEL/BELL



CHIME



TIMPANI



CONCERT PERCUSSION



<http://www.yamahapercussion.com>

*Specifications are subject to change without notice.

*Some models may not be available in some countries.

*Colors shown in this catalog may not be represented exactly as the original colors due to printing processes involved.



This document is printed on chlorine-free (ECF) paper with soy ink.



LEP0348U xxxxx Printed in Japan