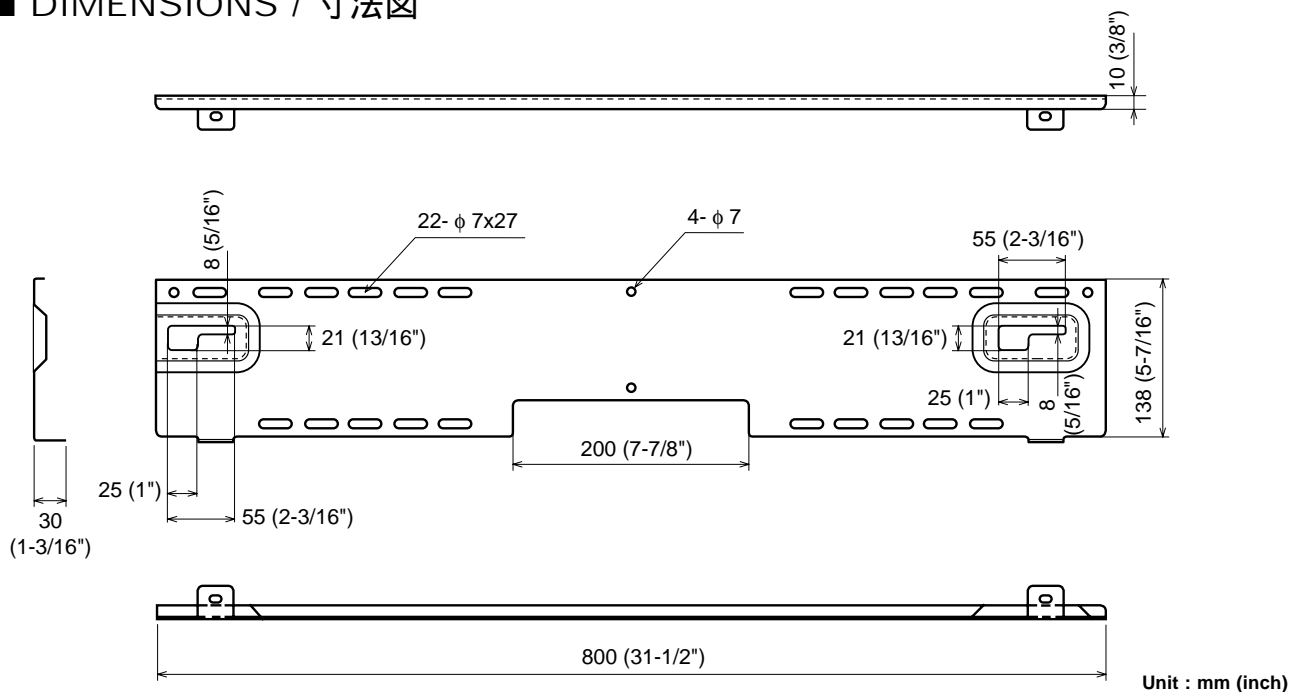


# WALL MOUNT BRACKET SPM-K1

## SERVICE MANUAL

for SOUND PROJECTOR / サウンドプロジェクター専用

### ■ DIMENSIONS / 寸法図



### ■ SPECIFICATIONS / 参考仕様

**Dimensions / 外形寸法** (幅 x 高さ x 奥行き)

800 x 140 x 30 mm  
(31-1/2" x 5-1/2" x 1-3/16")

**Weight / 質量**

1.6 kg (3 lbs. 8 oz)

**Finish / 仕上げ**

Black Color

**Accessories / 付属品**

Wall Mount Bracket x 2  
Screw (M6 x 16) x 6  
Screw (M4 x 10) x 2  
Safety Wire (300 mm) x 2

**Usable Model / 適応モデル**

YSP-1



このサービスマニュアルは、エコマーク認定の再生紙を使用しています。  
This Service Manual uses recycled paper.

100945

Copyright 2005 YAMAHA CORPORATION □

This manual is copyrighted by YAMAHA and may not be copied or □  
redistributed either in print or electronically without permission. □



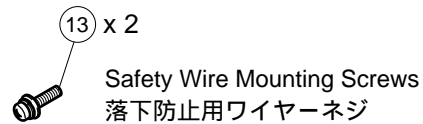
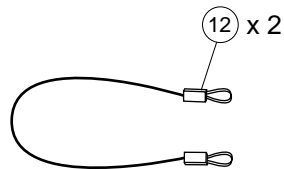
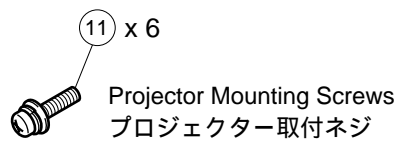
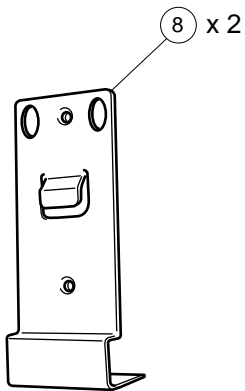
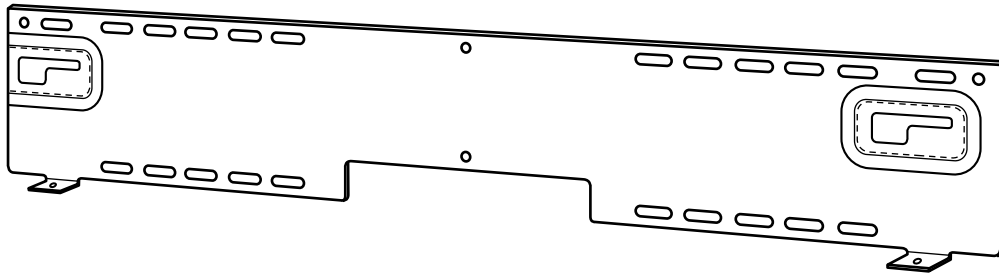
**YAMAHA**

YAMAHA CORPORATION  
P.O. Box 1, Hamamatsu, Japan

'05.03

SPM-K1

# EXPLODED VIEW / 分解図



Ref. No.	PART NO.	Description	Remarks	Markets	部品名	リンク
* 8	WE514000	WALL MOUNT BRACKET	1pc		壁掛け金具	
* 11	WE863800	SEMS PAN HEAD SCREW	6x16 MFZN2W3, 1pc	Projector Mounting Screw	セムスナベ小ネジ	
* 12	WF404200	SAFETY WIRE	300mm 1pc		落下防止用ワイヤー	
* 13	WF419500	SEMS BIND HEAD SCREW	4x10 MFZN2W3, 1pc	Safety Wire Mounting Screw	セムスバインド小ネジ	

\* New Parts