

## User Guide



---

# Table of contents

Introduction.....	2
About the Control Center .....	2
Compatible products .....	2
NOTE .....	2
Setup.....	3
Setting up the Control Center .....	3
Stream Deck app setup.....	3
Screen layout .....	4
Device List screen .....	4
Profile Preview screen.....	5
Menu .....	8
Mini Navigation.....	8
Basic Operations .....	9
Selecting a device.....	9
Switching profiles .....	10
Configuring action details.....	12
Using Mini Navigation .....	13
Setting up the device itself .....	15
Linking with the Stream Deck app .....	16
Device settings .....	19
Supported devices .....	19
Device-specific settings .....	19
Frequently asked questions .....	20
I can't operate apps like Cubase on my device.....	20
I can't link with the Stream Deck app.....	21
Preset hotkeys don't work .....	22

# Introduction

## About the Control Center

The Control Center is control software exclusively for Yamaha products. It allows you to assign your preferred functions to keys, buttons, and knobs on the product itself. It creates a comfortable operating environment that suits each customer's needs.

The Control Center is compatible with Elgato's control application, Stream Deck. By linking the Stream Deck app with the Control Center, you can use Yamaha products as controllers on the Stream Deck app. Also, by using plug-ins available in the Elgato Marketplace, you can dramatically expand the number of applications you can control.

## Compatible products

The Yamaha products that can be controlled with the Control Center are listed below. Click to open the product site.

- [CC1](#)

## NOTE

- All copyrights to this software and User Guide are owned by Yamaha Corporation.
- This software and User Guide may not be reproduced or modified in whole or in part without permission.
- Please note that we cannot be held responsible for any results or effects of using this software or User Guide.
- All illustrations and screenshots shown in this User Guide are for illustrative purposes only. The actual specifications may differ.
- Windows is a registered trademark of Microsoft Corporation in the United States and other countries.
- Mac and macOS are trademarks of Apple Inc., registered in the United States and other countries.
- Elgato and Stream Deck are registered trademarks of Corsair Memory, Inc. (USA), registered in the United States and other countries.
- The company names and product names in this document are trademarks or registered trademarks of their respective companies.

# Setup

## Setting up the Control Center

Follow the steps below to set up the Control Center.

1. Download TOOLS for XX (XX is the product name)  
Control Center is included in the TOOLS package of Yamaha products that are compatible with this application. The TOOLS package is a complete set of software required to use Yamaha products on a computer. Access the Yamaha product website for your [compatible product](#) and download the TOOLS package.
2. Unzip (extract) the downloaded file
3. Launch the TOOLS for XX Installer
4. Follow the on-screen instructions to install TOOLS for XX
5. Launching the Control Center
  - **Windows:** Launch the Control Center from the Start menu or desktop shortcut
  - **Mac:** Launch Control Center from your Applications folder
6. Using Control Center and setting control permissions (Mac only)  
If you use the Control Center on a Mac, allow use of the application and control of your computer in System Settings.
  1. Go to System Settings > Privacy & Security and turn on Control Center permissions near the bottom of the page



If the screen for setting use permissions is not displayed, skip this step.

2. Go to System Settings > Privacy & Security > Accessibility and turn on permission for Control Center to control your computer

This completes the setup of the Control Center.

## Stream Deck app setup

To use a Yamaha product as a Stream Deck app controller, you must install the Stream Deck app. Download the Stream Deck app from the website below and install it on your computer.

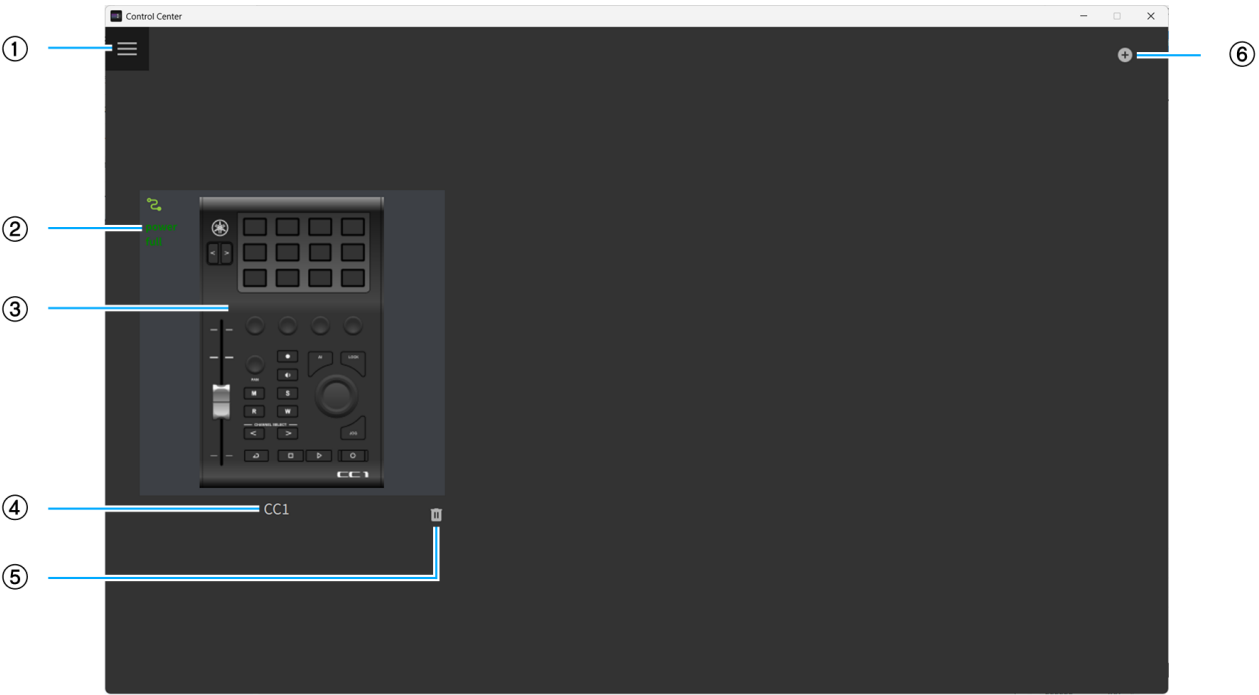
<https://elgato.com/download/>

# Screen layout

This section explains the Control Center screen.




## Device List screen

This is the screen for managing the Yamaha products (**devices**) you want to control.



① Displays the [Menu](#).

② Displays the connection status of the device.

Indicator	Explanation
	The device is connected and has sufficient power.
	The device is connected but has insufficient power. Refer to your device’s instruction manual to power it.
	The device is not connected.

③ The device connected to your computer. Click to display the [Profile Preview screen](#).

- ④ The device name set for the device. Click to change the device name.
- ⑤ Delete the device.
- ⑥ Add a demo device.



Adding a demo device allows you to see the functionality of Control Center-enabled products before you buy them.

## Profile Preview screen

This screen allows you to manage the sets of functions (**profiles**) assigned to each control on the device, configure the details of each function (**action**) assigned to each control, and configure the device itself.



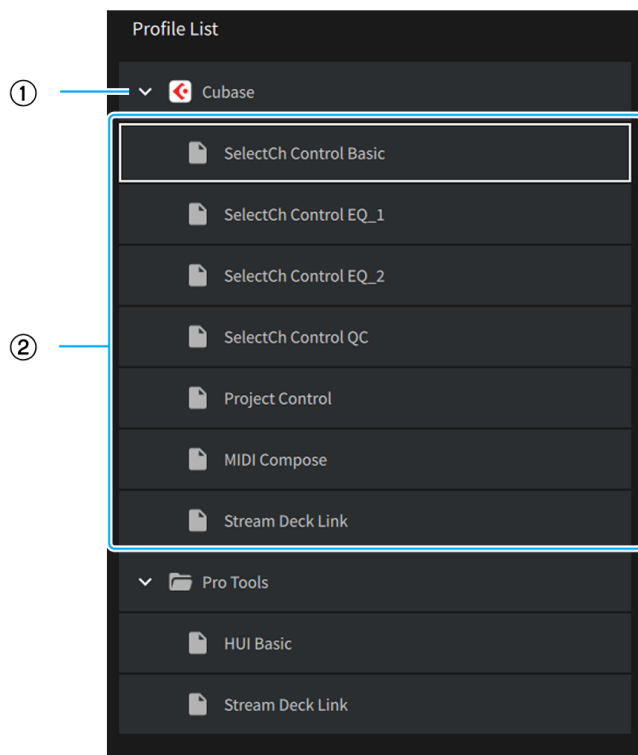
- ① Displays the [Menu](#).
- ② Displays the [Device List screen](#).
- ③ The connection status of the device and device name.
- ④ The name of the profile applied to the device.
- ⑤ Displays the [Device Settings](#).
- ⑥ Select and manage your profiles. For more information, see [Profile List](#).
- ⑦ Enter a description and notes for the profile.
- ⑧ The details of the profile applied to the device. For more information, see [Profile Preview](#).

⑨ Change the area of the device displayed in ⑧.

⑩ Set the details of the action selected in ⑧. For more information, see [Property Inspector](#).

## Profile List

Select and manage your profiles.



① This is a folder that contains profiles. Click to show or hide profiles in the folder.

② Select the profile to be applied to the device.

## Profile Preview

Check the details of the profile applied to the device.



① The action assigned to the control. Click to set the details of the action in [Property Inspector](#).

## Property Inspector

Set the details of the action selected in [Profile Preview](#).



① The type of action.

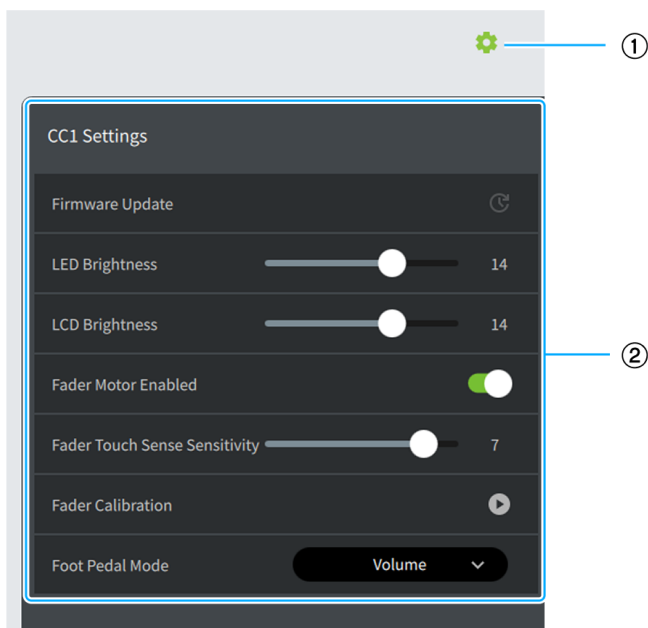
② Set the title of the action.

③ Change the font size of the title.

④ Set the details of the action. The settings vary depending on the action.

## Device Settings

Configure the device settings.



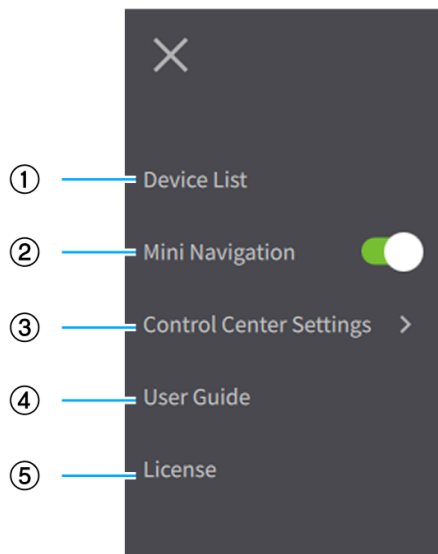
① Close the device settings.



② Configure the device settings. The settings vary depending on the device. For more information, see [Device Settings](#).

## Menu

This is the Control Center menu.



① Display the [Device List screen](#).

② Enable/disable the [Mini Navigation](#).

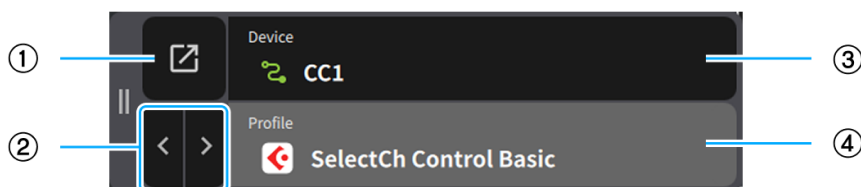
③ Configure the Control Center.

④ Display the Control Center User Guide.

⑤ Display the Control Center license.

## Mini Navigation

Use this to switch the Control Center to a compact view.



① Return the screen to its original display.

② Switch between profiles one by one.

③ The connection status of the device and device name. Clicking this area will display a list of devices, allowing you to select another device.

④ The profile applied to the device. Clicking this area will display a list of profiles, allowing you to select another profile.

# Basic Operations

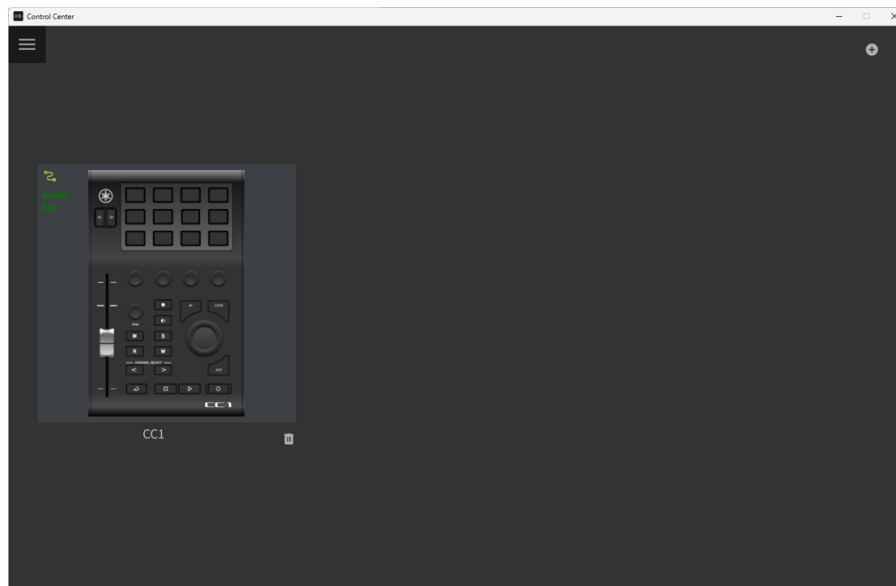
This section explains the basic operations of the Control Center.

## Selecting a device

To control a Yamaha product (**device**), select the device in the Control Center.

### Procedure

1. Connect the device to your computer. Once connected to your computer, the device image will appear in the Control Center's Device List screen.



2. Check the indicator in the top left corner of the device image. If the indicator is solid green and "power full" is displayed, you can control that device in the Control Center.



3. Select the device. Once you select the device, a screen for controlling the device (profile preview screen) will be displayed.

## Switching profiles

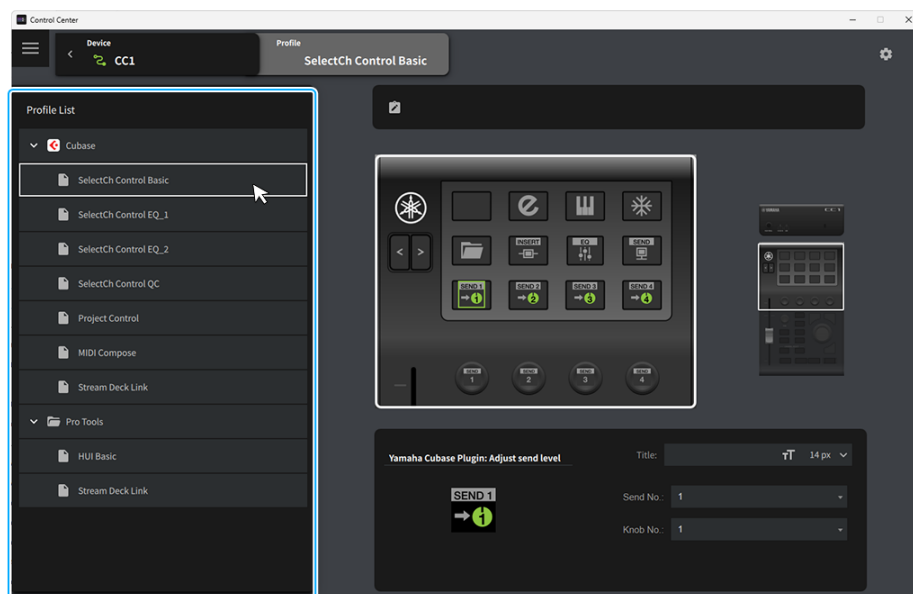
The Control Center allows you to switch and manage the sets of functions (**profiles**) that you assign to each control on the device. By switching profiles to suit your needs, you can minimize operations and create a more comfortable and efficient work environment.

### Procedure

Use one of the following methods to switch profiles:

- **Switch in the Profile List**

Select a profile from the Profile List on the left side of the profile preview screen.



- **Switch with Mini Navigation**

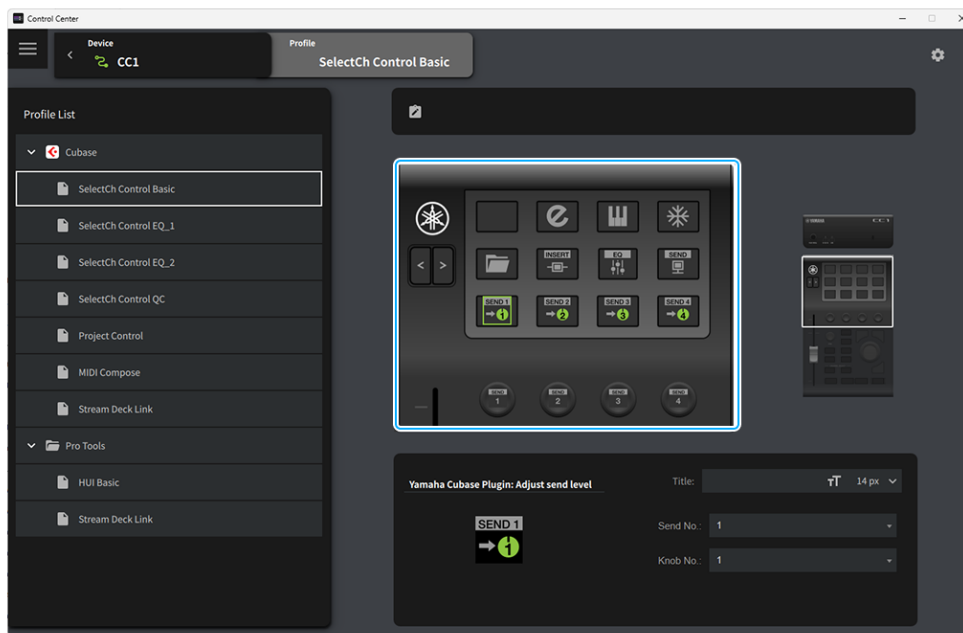
For more information, see [Using Mini Navigation](#).

- **Switch with the device's buttons (some products only)**

Press the buttons on the device to switch profiles.



You can check the contents of the switched profile in the profile preview on the right side of the screen.



## Configuring action details

In the Control Center, you can configure the details of each function (**action**) assigned to each control on the device. By customizing the action titles and parameters, you can create a personalized operating environment that suits your work style.

### Procedure

1. In the profile preview, click the action you want to configure details for.

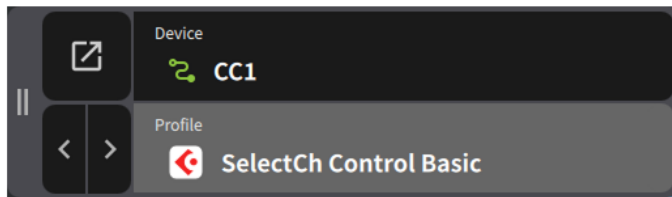


2. Configure the details of the action in the Property Inspector below the profile preview.



## Using Mini Navigation

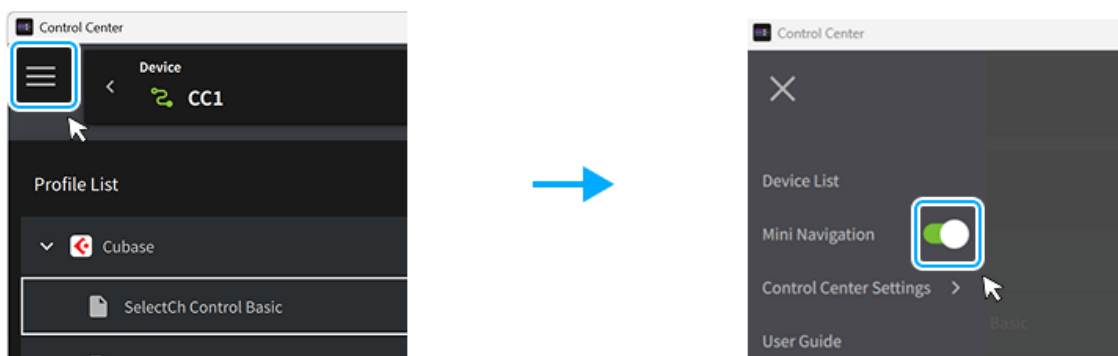
Enabling Mini Navigation allows you to use the Control Center with a compact view. Quickly switch between devices and profiles to stay focused on your work.



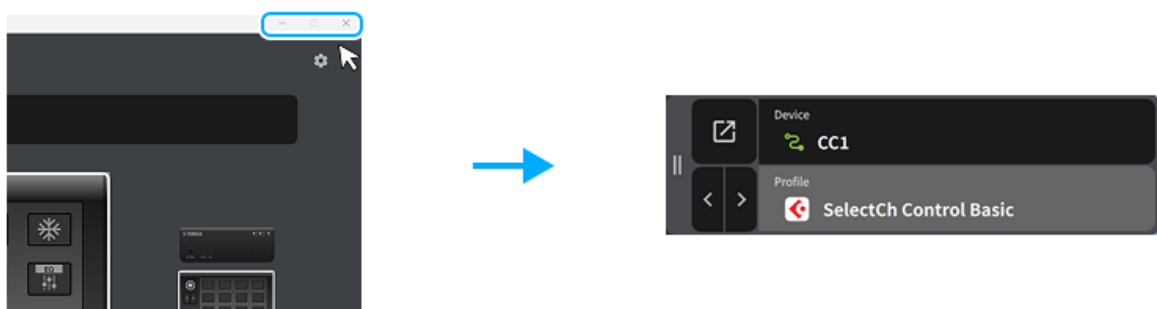
### Procedure

#### Switching the display

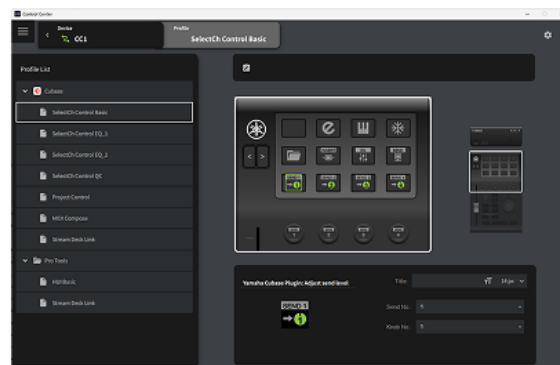
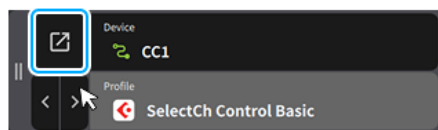
1. Enable Mini Navigation on menu screens.



2. Close or minimize the Control Center window and switch the display to Mini Navigation.



3. To return to the original screen, click the button at the top left.



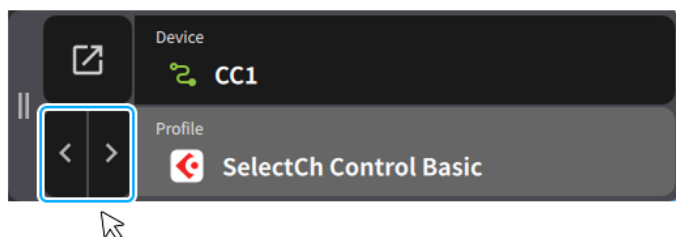
## Switching devices

Clicking on the device name area in Mini Navigation will display a list of profiles, allowing you to select other profiles.

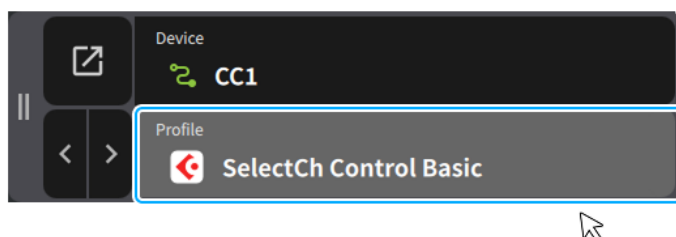


## Switching profiles

Click the profile switch buttons in Mini Navigation to switch between profiles one by one.



Clicking on the profile name area in Mini Navigation will display a list of profiles, allowing you to select other profiles.

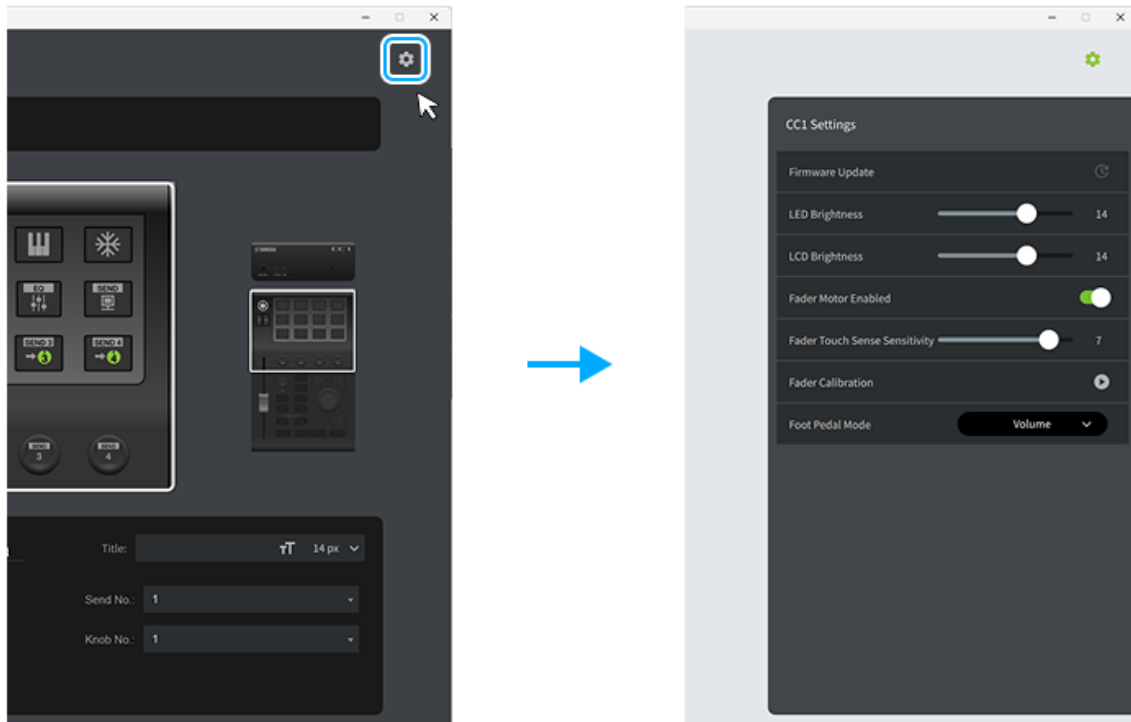


## Setting up the device itself

The Control Center allows you to update the firmware of the device itself and configure various settings.

### Procedure

1. Click the gear button in the top right corner of the profile preview screen.
2. Configure the device. For details on the settings for each device, see [Device Settings](#).





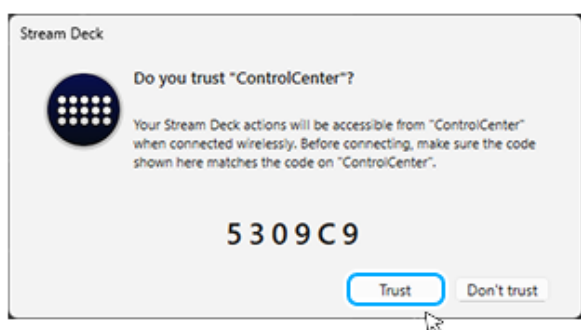
# Linking with the Stream Deck app

The Control Center can be used in combination with Elgato's control application, Stream Deck. Actions configured in the Stream Deck app can be assigned to devices through the Control Center.

This allows you to take advantage of a wide range of plug-ins available in the Elgato Marketplace, giving you control over even more applications. It also enables control of the livestreaming software OBS and Yamaha products that are compatible with the Stream Deck app and connected to the same computer.

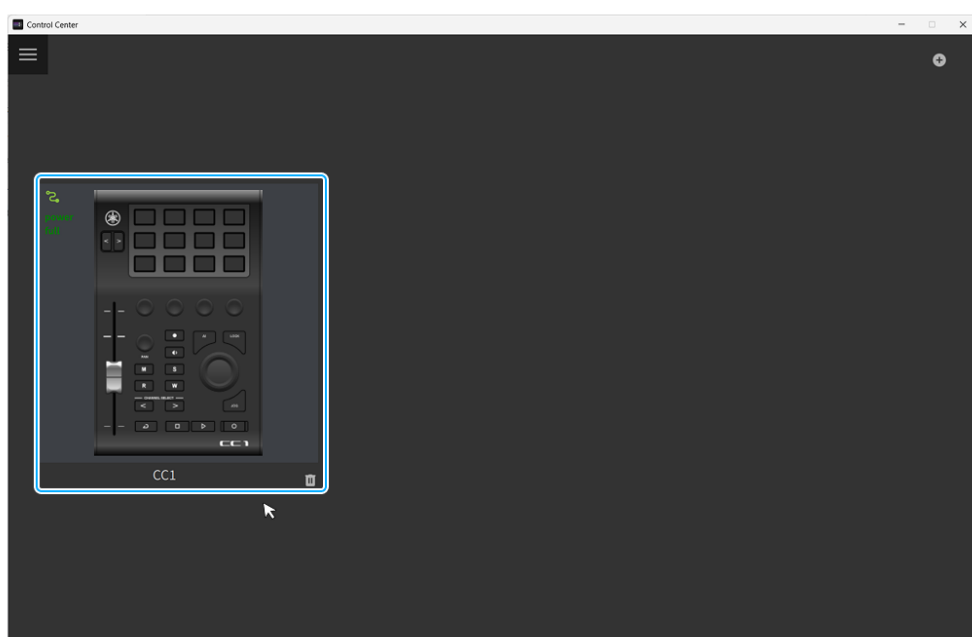
## Preparation

1. Download the Stream Deck app from the website below and install it on your computer.  
<https://elgato.com/download/>
2. Launch the Control Center and Stream Deck app.
3. If the Stream Deck app displays the message 'Do you trust "ControlCenter"?' click [Trust].

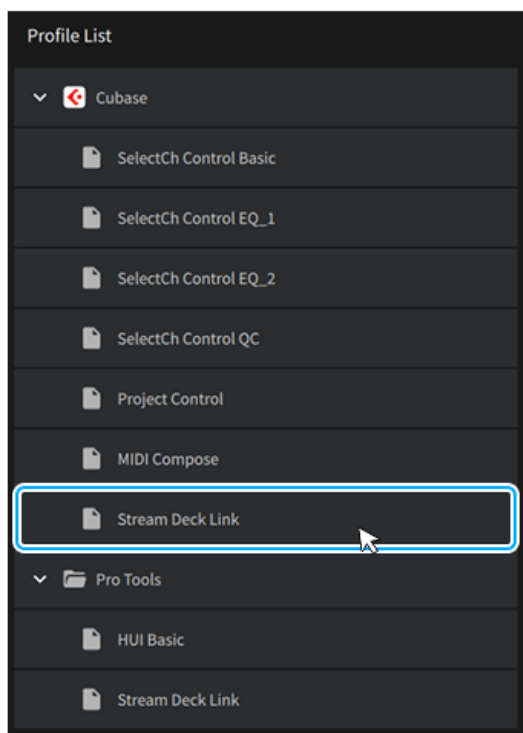


## Procedure

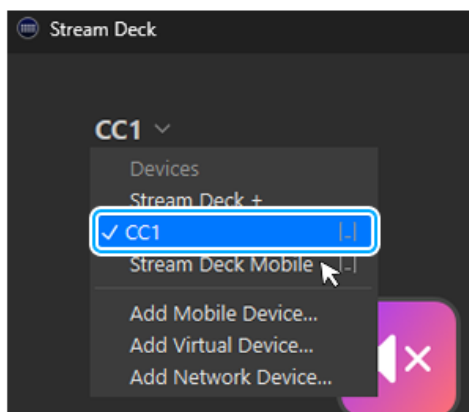
1. Connect the device to your computer.
2. Select the device on the Control Center's Device List screen.



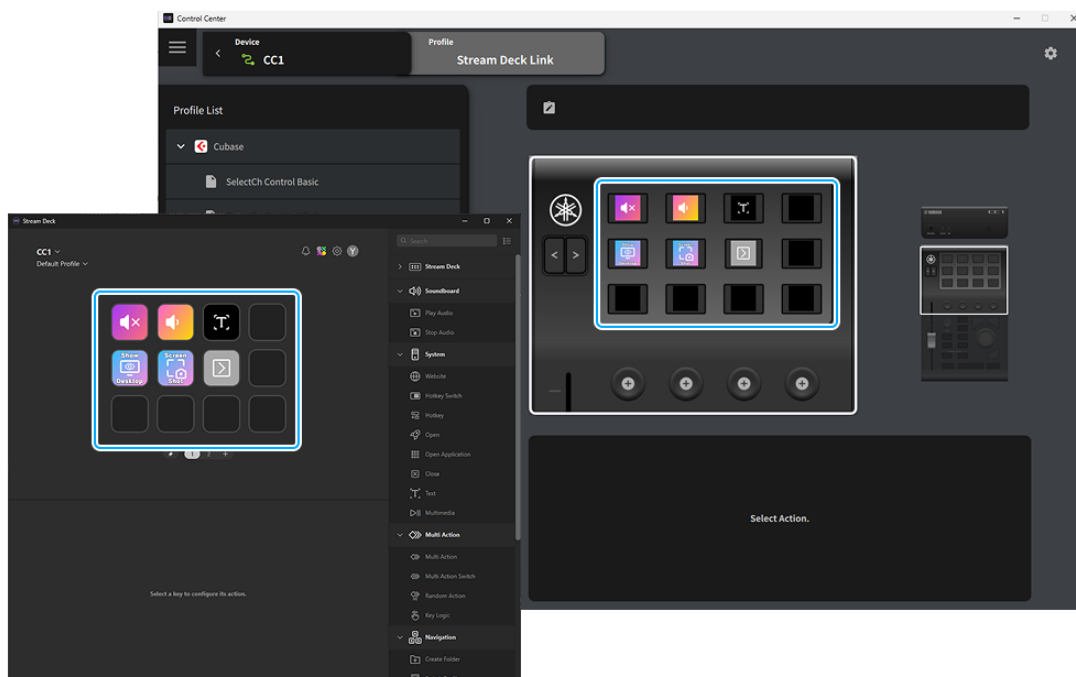
3. In the Control Center, select the [Stream Deck Link] profile.



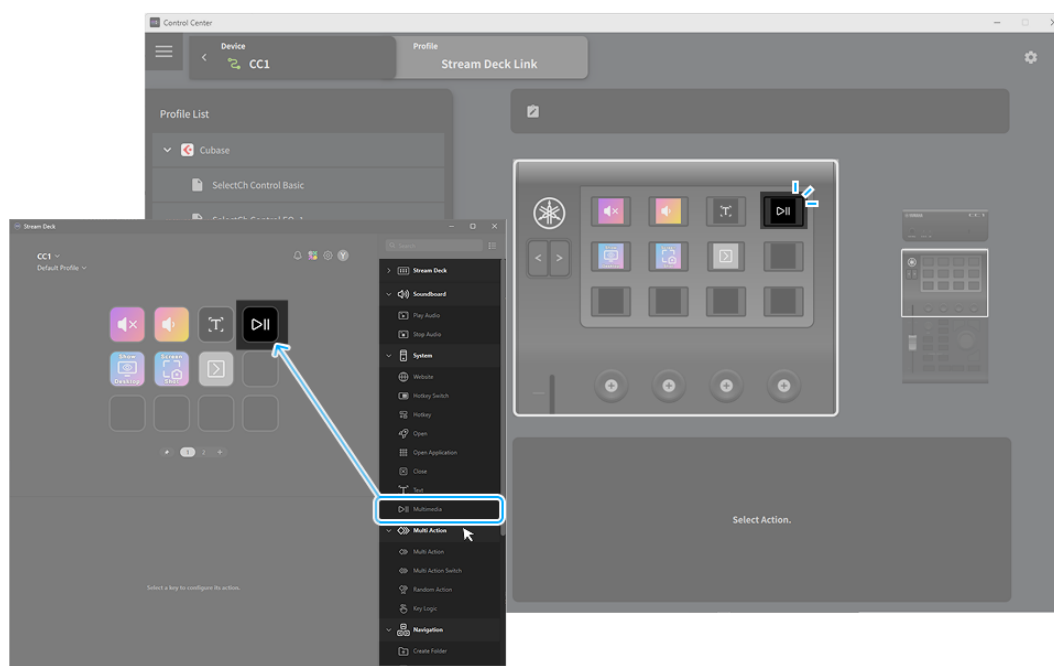
4. In the Stream Deck app, switch the device to the one you selected in step 2.



5. Check the profile preview in the Control Center. If the same actions as in the Stream Deck app are displayed, the Control Center and the Stream Deck app are linked properly.



6. Customize action assignments and parameters in the Stream Deck app. Settings in the Stream Deck app are reflected on your device through the Control Center.



For more information about using the Stream Deck app, see the Elgato website.  
<https://elgato.com/>

7. Operate the device to perform actions.

---

# Device settings

This section explains how to set up the device itself.

## Supported devices

You can configure the following devices in the Control Center:

- [CC1](#)

## Device-specific settings

### CC1

- **Firmware Update**  
Updates the firmware of CC1.
- **LED Brightness**  
Adjusts the brightness of the LED buttons.
- **LCD Brightness**  
Adjusts the brightness of the LCD keys.
- **Fader Motor Enabled**  
Toggles the motor drive of the fader on/off.
- **Fader Touch Sense Sensitivity**  
Adjusts the touch sense sensitivity of the fader.
- **Fader Calibration**  
Calibrates the fader motor. This is useful if there is a discrepancy in the operation of the fader motor.
- **Foot Pedal Mode**  
Toggles the foot pedal's Switch/Volume mode.

# Frequently asked questions

## I can't operate apps like Cubase on my device

- **Control Center communication and access has not been permitted**

When you first launch the Control Center, you may see a pop-up screen asking you to set app communication and access permissions. If so, please configure the following PC or Mac settings.

- **Windows settings**

On the pop-up screen where you can set app communication permissions, check "Public" and "Private." If the pop-up screen does not appear, go to [Control Panel] > [System and Security] > "Allow an app through Windows Firewall" and check "Public" and "Private" for ControlCenter.exe.

- **Mac settings**

From the pop-up screen, go to "System Settings" and configure the following settings:

1. Go to Privacy & Security and turn on Control Center permissions near the bottom of the page



If the screen for setting use permissions is not displayed, skip this step.

2. Go to Privacy & Security > Accessibility and turn on permission for Control Center to control your computer

- **The device is not connected to your computer**

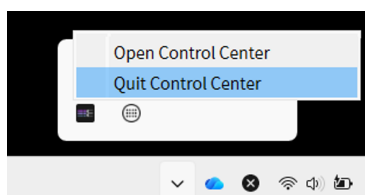
Connect the device to your computer.

- **If the above does not solve the problem**

Restart the Control Center as follows:

- **Windows**

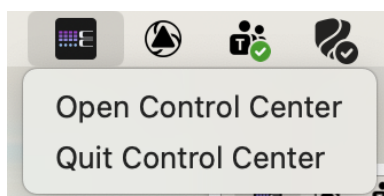
1. Right-click the Control Center icon in the taskbar and click "Quit Control Center"



2. Launch the Control Center from the Start menu or desktop shortcut

- **Mac**

1. Right-click the Control Center icon in the menu bar and click "Quit Control Center"



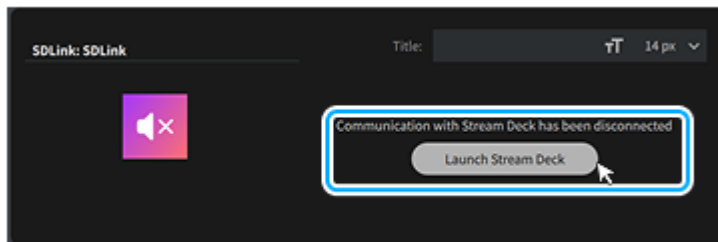
2. Launch Control Center from your Applications folder

## I can't link with the Stream Deck app

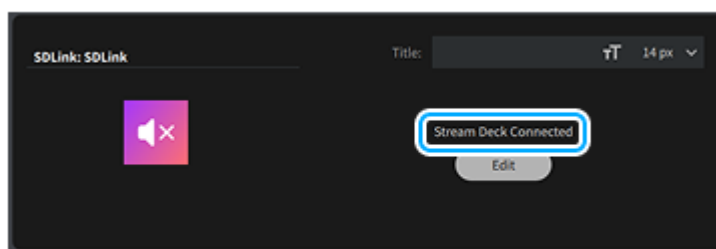
- **The Control Center and Stream Deck app are not communicating**

In the Control Center, do the following to reconnect with the Stream Deck app:

1. Select the [Stream Deck Link] profile
2. In the profile preview, click the action for the Stream Deck app
3. Check the Property Inspector display
4. If you see the message "Communication with Stream Deck has been disconnected," click the [Launch Stream Deck] or [Reconnect] button below the message



Once the Control Center and Stream Deck app are successfully linked, "Stream Deck Connected" will appear in the Property Inspector.



- **You clicked [Don't trust] on the screen asking whether you want to trust the Control Center**

If the Stream Deck app displays the message 'Do you trust "Control Center"?' click [Trust].

- **The Stream Deck app is not running**

If you want to use Control Center and the Stream Deck app together, launch the Stream Deck app.

- **The device is not connected to your computer**

Connect the device to your computer.

## Preset hotkeys don't work

- **Current hotkey settings are not compatible with your computer or shortcut key settings**

Preset hotkeys may not work correctly if they are not compatible with your computer's keyboard settings, OS language, or DAW shortcut key settings. If necessary, update your hotkey settings for your environment. Hotkey settings can be changed using the Property Inspector. For details, refer to [Configuring action details](#).

